

FOR TAX PURPOSES ONLY
NOT TO BE USED FOR CONVEYANCE

All tax maps are referenced to the New York State Plane Central Coordinate System using the 1983 North American Datum. Property lines have been registered to 1991-92 Tompkins County Digital Planimetric Base Map, and, as a result, dimensions and acreages may vary from legal descriptions. For complete legal descriptions or conveyances, please refer to the appropriate deeds and surveys.

NOTICE OF DISCLAIMER

This map represents a compilation of graphical and textual information from deeds and surveys, a digital planimetric base map, and digital conversion of hand-drawn mylar maps. Errors and omissions can occur from each of these sources, each source represents a large number of records and origins of information. As a practical matter, the County does not warrant the accuracy or completeness of the information portrayed. The end user of these maps agrees to accept the data "as is" with the full knowledge that errors and omissions may exist, and to hold harmless the County for any damages that may result from an inappropriate use of these maps.

SPECIAL DISTRICT INFORMATION

Special Districts

Trumansburg Central School District
 Enfield Fire District

Building Footprint (1991-2024)
 Curb/Pavement Line
 Railroad
 Hydrography
 Leased Suffix Account
 Municipality
 Military Tract/Watkins & Flint Lot Number

LEGEND

Parcel Connector
 Property Line
 Former Property Line
 Current Year Changes
 Block Limit
 External Tax Map
 Block Number

Parcel Lot Number
 Previous Lot Number
 Subdivision Lot Number
 Deed/Survey Acreage
 Computed Acreage
 Grouped (Total) Acreage
 Scaled (Calculated) Acreage
 Deed Dimension

43.1
 3.12
 4.3
 5.6 Ac
 2.11 Ac C
 18.50 Ac C
 100s
 100d

TOWN OF ENFIELD
 TOMPKINS COUNTY, N.Y.

0 175 350 700 Feet

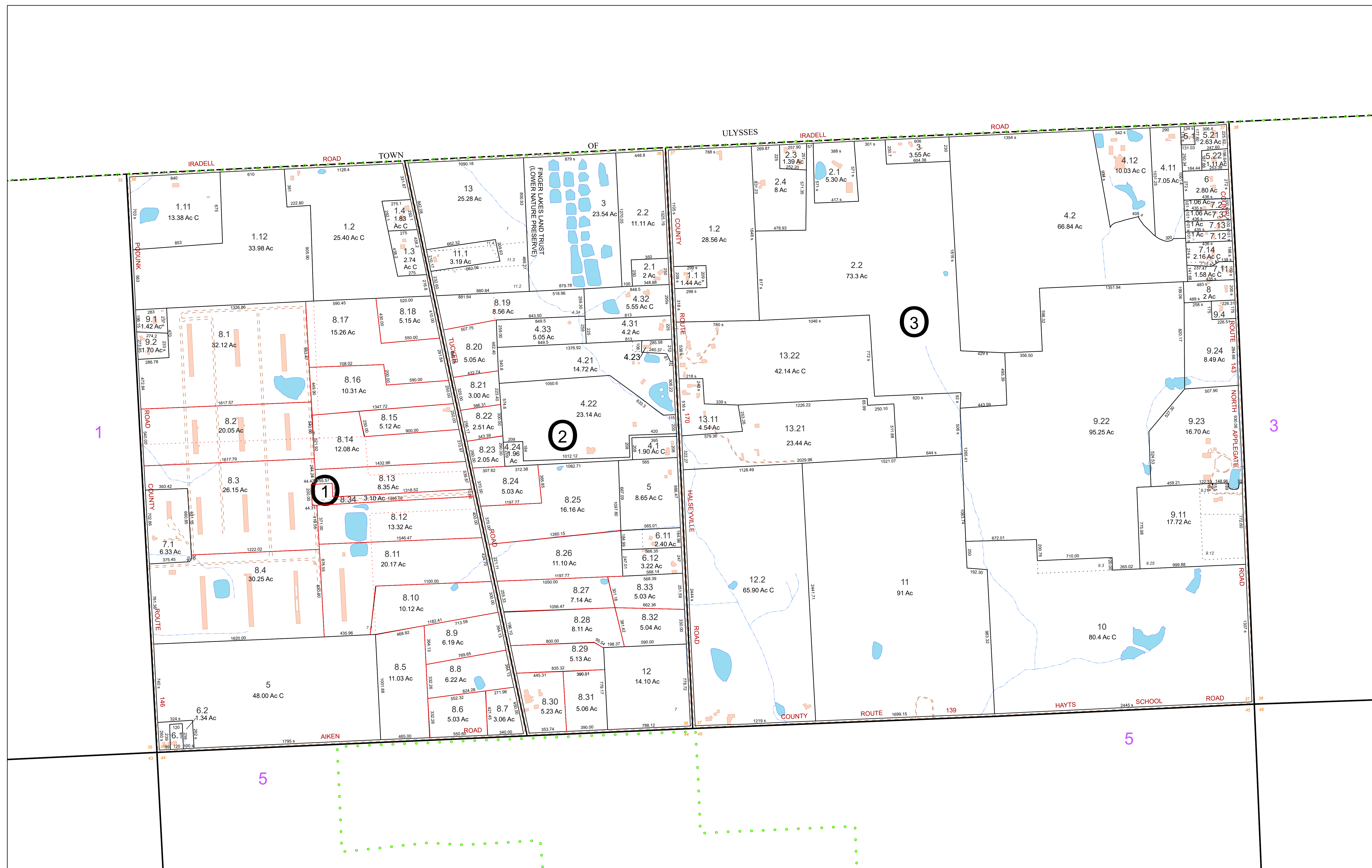
North

MAP: 1

SCALE: 1" = 400'

(When plotted on Arch D Media)
 11 x 17" (47%), scale is 1" = 800'

MAP REVISED: 1-JULY-2024
 MAP PRINTED: 1-JULY-2024



FOR TAX PURPOSES ONLY
NOT TO BE USED FOR CONVEYANCE

All tax maps are referenced to the New York State Plane Central Coordinate System using the 1983 North American Datum. Property lines have been registered to 1991-92 Tompkins County Digital Planimetric Base Map, and, as a result, dimensions and acreages may vary from legal descriptions. For complete legal descriptions or conveyances, please refer to the appropriate deeds and surveys.

NOTICE OF DISCLAIMER

This map represents a compilation of graphical and textual information from deeds and surveys, a digital planimetric base map, and digital conversion of hand-drawn mylar maps. Errors and omissions can occur from each of these sources, each source represents a large number of records and origins of information. As a practical matter, the County does not warrant the accuracy or completeness of the information portrayed. The end user of these maps agrees to accept the data "as is" with the full knowledge that errors and omissions may exist, and to hold harmless the County for any damages that may result from an inappropriate use of these maps.

SPECIAL DISTRICT INFORMATION

- Special Districts
- Trumansburg Central School District
- Enfield Fire District

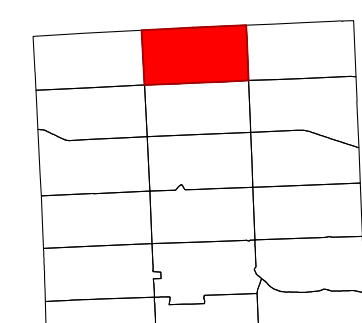
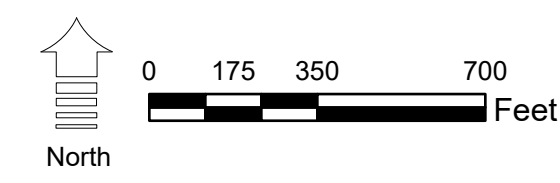
- Building Footprint (1991-2024)
- Curb/Pavement Line
- Railroad
- Hydrography
- Leased Suffix Account
- Municipality
- 91 6-1-3 Military Tract/Watkins & Flint Lot Number

LEGEND

- Parcel Connector
- Property Line
- Former Property Line
- Current Year Changes
- Block Limit
- External Tax Map
- Block Number

- 43.1 Parcel Lot Number
- 3.12 Previous Lot Number
- 4.3 Subdivision Lot Number
- 5.6 Ac Deed/Survey Acreage
- 2.11 Ac C Computed Acreage
- 18.50 Ac G Grouped (Total) Acreage
- 100s Scaled (Calculated) Acreage
- 100d Deed Dimension

TOWN OF ENFIELD
TOMPKINS COUNTY, N.Y.



MAP: 2
SCALE: 1" = 400'
(When plotted on Arch D Media)
11 x 17" (47%), scale is 1" = 800'
MAP REVISED: 1-JULY-2024
MAP PRINTED: 1-JULY-2024



FOR TAX PURPOSES ONLY
NOT TO BE USED FOR CONVEYANCE

All tax maps are referenced to the New York State Plane Central Coordinate System using the 1983 North American Datum. Property lines have been registered to 1991-92 Tompkins County Digital Planimetric Base Map, and, as a result, dimensions and acreages may vary from legal descriptions. For complete legal descriptions or conveyances, please refer to the appropriate deeds and surveys.

NOTICE OF DISCLAIMER

This map represents a compilation of graphical and textual information from deeds and surveys, a digital planimetric base map, and digital conversion of hand-drawn mylar maps. Errors and omissions can occur from each of these sources, each source represents a large number of records and origins of information. As a practical matter, the County does not warrant the accuracy or completeness of the information portrayed. The user of these maps agrees to accept the data "as is" with the full knowledge that errors and omissions may exist, and to hold harmless the County for any damages that may result from an inappropriate use of these maps.

SPECIAL DISTRICT INFORMATION

Special Districts

Ithaca City School District
Trumansburg Central School District
Enfield Fire District

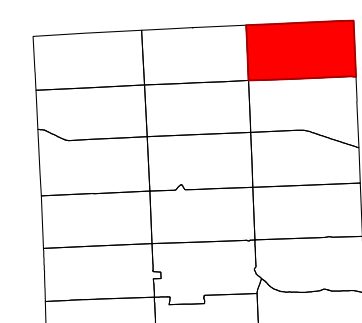
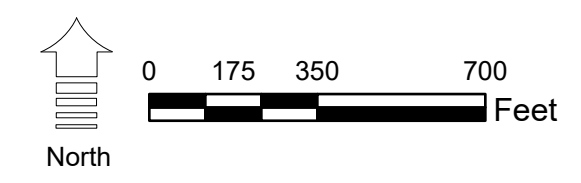
- Building Footprint (1991-2024)
- Curb/Pavement Line
- Railroad
- Hydrography
- Leased Suffix Account
- Municipality
- Military Tract/Watkins & Flint Lot Number

LEGEND

- Parcel Connector
- Property Line
- Former Property Line
- Current Year Changes
- Block Limit
- External Tax Map
- Block Number

- 43.1** Parcel Lot Number
- 3 12** Previous Lot Number
- 4.3** Subdivision Lot Number
- 5.6 Ac** Deed/Survey Acreage
- 2.11 Ac C** Computed Acreage
- 18.50 Ac G** Grouped (Total) Acreage
- 100s** Scaled (Calculated) Acreage
- 100d** Deed Dimension

TOWN OF ENFIELD
TOMPKINS COUNTY, N.Y.



MAP: 3
SCALE: 1" = 400'
(When plotted on Arch D Media)
11 x 17" (47%), scale is 1" = 800'
MAP REVISED: 1-JULY-2024
MAP PRINTED: 1-JULY-2024



FOR TAX PURPOSES ONLY
NOT TO BE USED FOR CONVEYANCE

All tax maps are referenced to the New York State Plane Central Coordinate System using the 1983 North American Datum. Property lines have been registered to 1991-92 Tompkins County Digital Planimetric Base Map, and, as a result, dimensions and acreages may vary from legal descriptions. For complete legal descriptions or conveyances, please refer to the appropriate deeds and surveys.

NOTICE OF DISCLAIMER
This map represents a compilation of graphical and textual information from deeds and surveys, a digital planimetric base map, and digital conversion of hand-drawn mylar maps. Errors and omissions can occur from each of these sources, each source represents a large number of records and origins of information. As a practical matter, the County does not warrant the accuracy or completeness of the information portrayed. The end user of these maps agrees to accept the data "as is" with the full knowledge that errors and omissions may exist, and to hold harmless the County for any damages that may result from an inappropriate use of these maps.

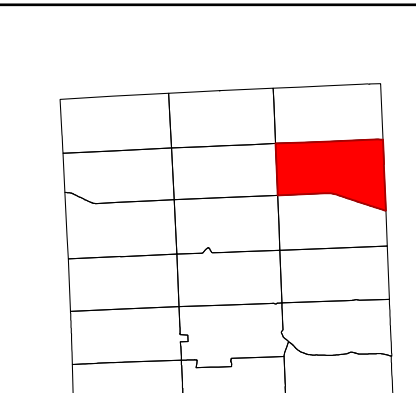
SPECIAL DISTRICT INFORMATION
Special Districts
Ithaca City School District
Trumansburg Central School District
Enfield Fire District

- Building Footprint (1991-2024)
- Curb/Pavement Line
- Railroad
- Hydrography
- Leased Suffix Account
- Municipality
- Military Tract/Watkins & Flint Lot Number

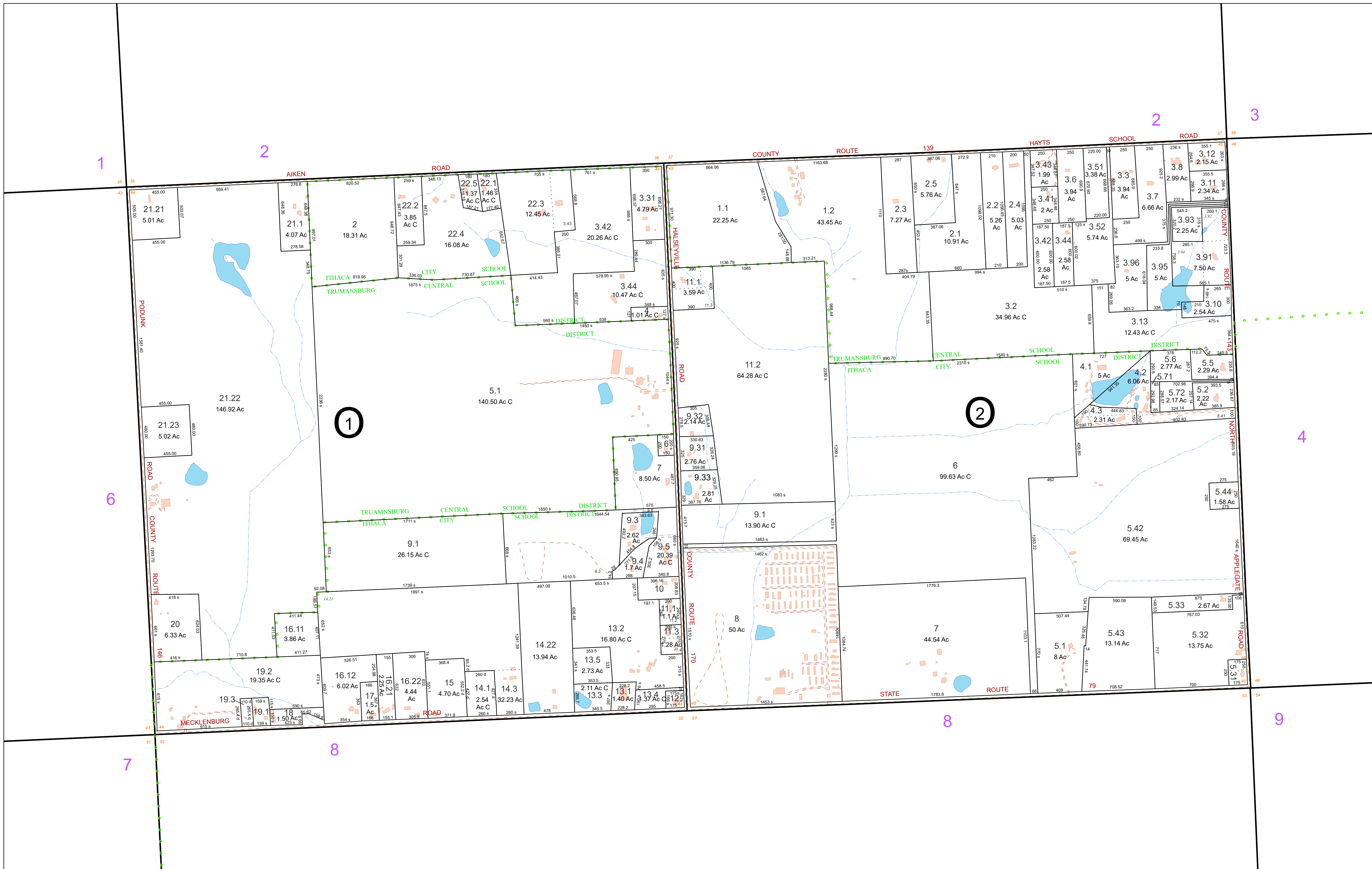
- Parcel Connector
- Property Line
- Former Property Line
- Current Year Changes
- Block Limit
- External Tax Map
- Block Number

- 43.1** Parcel Lot Number
- 3.12** Previous Lot Number
- 4.3** Subdivision Lot Number
- 5.6 Ac** Deed/Survey Acreage
- 2.11 Ac C** Computed Acreage
- 18.50 Ac C** Grouped (Total) Acreage
- 100s** Scaled (Calculated) Acreage
- 100d** Deed Dimension

TOWN OF ENFIELD
TOMPKINS COUNTY, N.Y.



MAP: 4
SCALE: 1" = 400'
(When plotted on Arch D Media)
11 x 17" (47%), scale is 1" = 800'
MAP REVISED: 1-JULY-2024
MAP PRINTED: 1-JULY-2024



FOR TAX PURPOSES ONLY
NOT TO BE USED FOR CONVEYANCE

All tax maps are referenced to the New York State Plane Central Coordinate System using the 1983 North American Datum. Property lines have been registered to 1991-92 Tompkins County Digital Planimetric Base Map, and, as a result, dimensions and acreages may vary from legal descriptions. For complete legal descriptions or conveyances, please refer to the appropriate deeds and surveys.

NOTICE OF DISCLAIMER

This map represents a compilation of graphical and textual information from deeds and surveys, a digital planimetric base map, and digital conversion of hand-drawn mylar maps. Errors and omissions can occur from each of these sources, each source represents a large number of records and origins of information. As a practical matter, the County does not warrant the accuracy or completeness of the information portrayed. The end user of these maps agrees to accept the data "as is" with the full knowledge that errors and omissions may exist, and to hold harmless the County for any damages that may result from an inappropriate use of these maps.

SPECIAL DISTRICT INFORMATION

Special Districts

- Ithaca City School District
- Trumansburg Central School District
- Enfield Fire District

LEGEND

- Building Footprint (1991-2024)
- Curb/Pavement Line
- Railroad
- Hydrography
- Leased Suffix Account
- Municipality
- Military Tract/Watkins & Flint Lot Number

LEGEND

- Parcel Connector
- Property Line
- Former Property Line
- Current Year Changes
- Block Limit
- External Tax Map
- Block Number

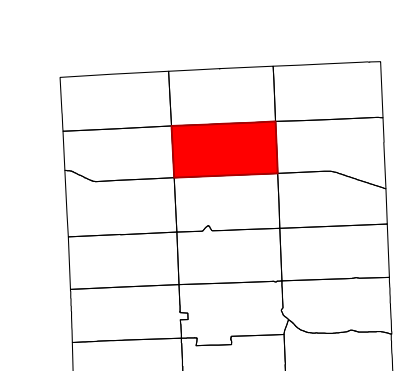
LEGEND

- 43.1 Parcel Lot Number
- 3.12 Previous Lot Number
- 4.3 Subdivision Lot Number
- 5.6 Ac Deed/Survey Acreage
- 2.11 Ac C Computed Acreage
- 18.50 Ac G Grouped (Total) Acreage
- 100s Scaled (Calculated) Acreage
- 100d Deed Dimension

TOWN OF ENFIELD
TOMPKINS COUNTY, N.Y.

0 175 350 700 Feet

North

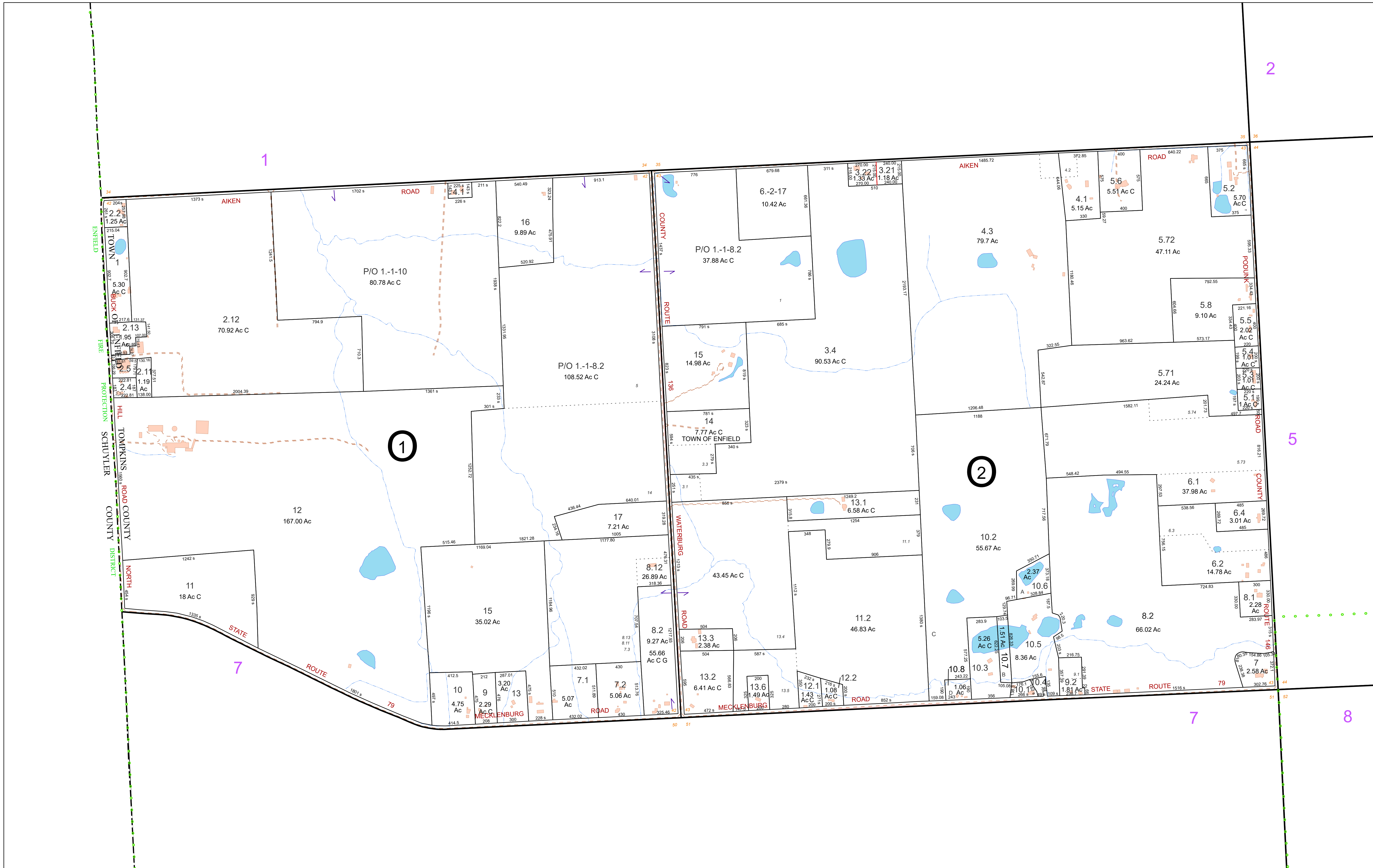


MAP: 5

SCALE: 1" = 400'

(When plotted on Arch D Media)
 11 x 17" (47%), scale is 1" = 800'

MAP REVISED: 1-JULY-2024
 MAP PRINTED: 1-JULY-2024



FOR TAX PURPOSES ONLY
NOT TO BE USED FOR CONVEYANCE
 All tax maps are referenced to the New York State Plane Central Coordinate System using the 1983 North American Datum. Property lines have been registered to 1991-92 Tompkins County Digital Planimetric Base Map, and, as a result, dimensions and acreages may vary from legal descriptions. For complete legal descriptions or conveyances, please refer to the appropriate deeds and surveys.

NOTICE OF DISCLAIMER
 This map represents a compilation of graphical and textual information from deeds and surveys, a digital planimetric base map, and digital conversion of hand-drawn mylar maps. Errors and omissions can occur from each of these sources, each source represents a large number of records and origins of information. As a practical matter, the County does not warrant the accuracy or completeness of the information portrayed. The end user of these maps agrees to accept the data "as is" with the full knowledge that errors and omissions may exist, and to hold harmless the County for any damages that may result from an inappropriate use of these maps.

SPECIAL DISTRICT INFORMATION
 • Special Districts
 Trumansburg Central School District
 Enfield Fire District

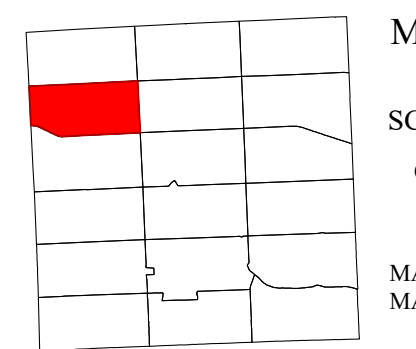
- Building Footprint (1991-2024)
- Curb/Pavement Line
- Railroad
- Hydrography
- Leased Suffix Account
- Municipality
- Military Tract/Watkins & Flint Lot Number

- LEGEND**
- Parcel Connector
 - Property Line
 - Former Property Line
 - Current Year Changes
 - Block Limit
 - External Tax Map
 - Block Number

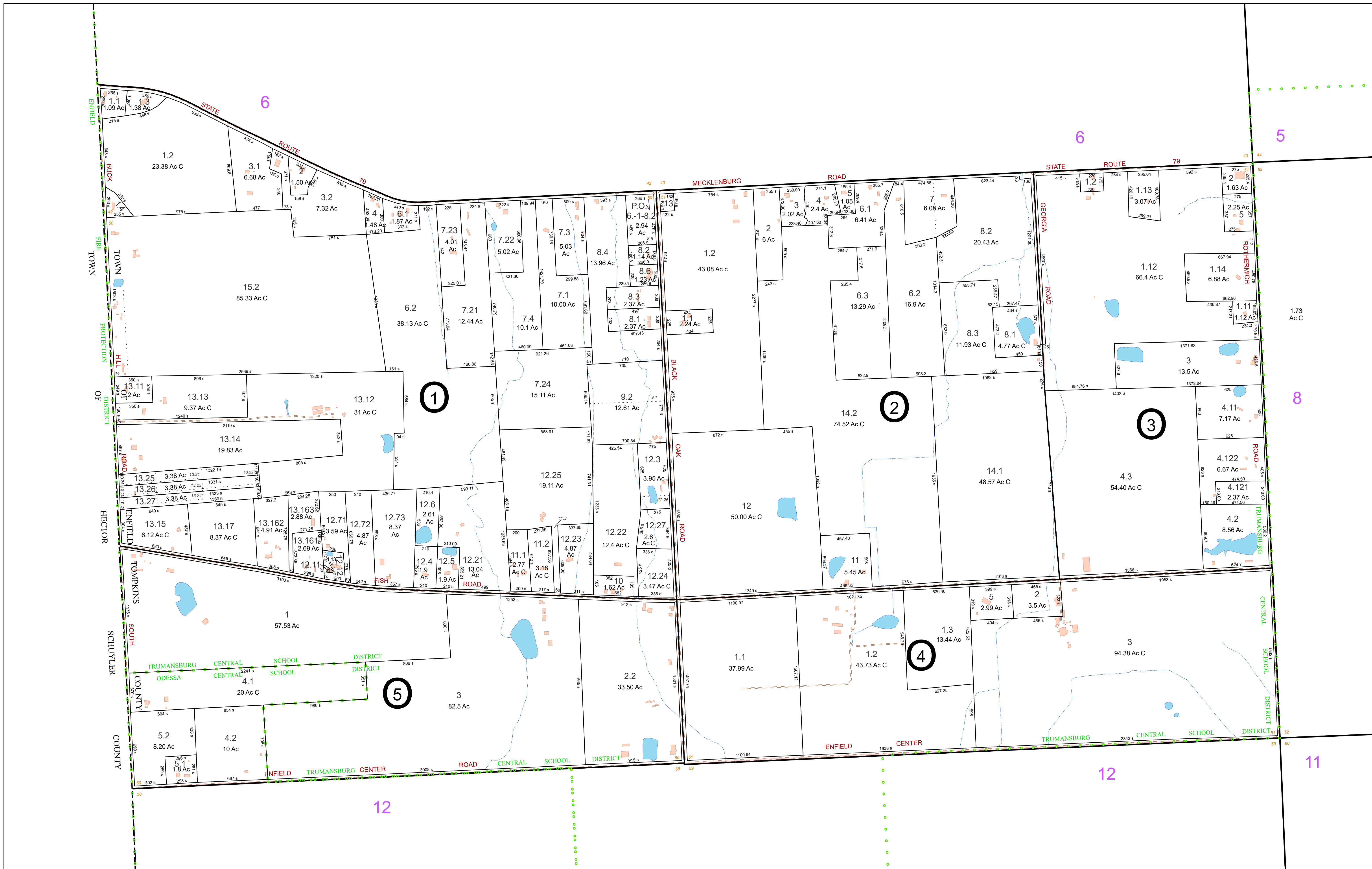
- 43.1** Parcel Lot Number
- 3 12** Previous Lot Number
- 4 3** Subdivision Lot Number
- 5.6 Ac** Deed/Survey Acreage
- 2.11 Ac C** Computed Acreage
- 18.50 Ac G** Grouped (Total) Acreage
- 100s** Scaled (Calculated) Acreage
- 100d** Deed Dimension

TOWN OF ENFIELD
 TOMPKINS COUNTY, N.Y.

North



MAP: 6
 SCALE: 1" = 400'
 (When plotted on Arch D Media)
 11 x 17" (47%), scale is 1" = 800'
 MAP REVISED: 1-JULY-2024
 MAP PRINTED: 1-JULY-2024



FOR TAX PURPOSES ONLY
NOT TO BE USED FOR CONVEYANCE

All tax maps are referenced to the New York State Plane Central Coordinate System using the 1983 North American Datum. Property lines have been registered to 1991-92 Tompkins County Digital Planimetric Base Map, and, as a result, dimensions and acreages may vary from legal descriptions. For complete legal descriptions or conveyances, please refer to the appropriate deeds and surveys.

NOTICE OF DISCLAIMER

This map represents a compilation of graphical and textual information from deeds and surveys, a digital planimetric base map, and digital conversion of hand-drawn mylar maps. Errors and omissions can occur from each of these sources, each source represents a large number of records and origins of information. As a practical matter, the County does not warrant the accuracy or completeness of the information portrayed. The end user of these maps agrees to accept the data "as is" with the full knowledge that errors and omissions may exist, and to hold harmless the County for any damages that may result from an inappropriate use of these maps.

SPECIAL DISTRICT INFORMATION

Special Districts

- Trumansburg Central School District
- Odessa-Montour Central School District
- Enfield Fire District

LEGEND

- Building Footprint (1991-2024)
- Curb/Pavement Line
- Railroad
- Hydrography
- Leased Suffix Account
- Municipality
- Military Tract/Watkins & Flint Lot Number
- Parcel Connector
- Property Line
- Former Property Line
- Current Year Changes
- Block Limit
- External Tax Map
- Block Number

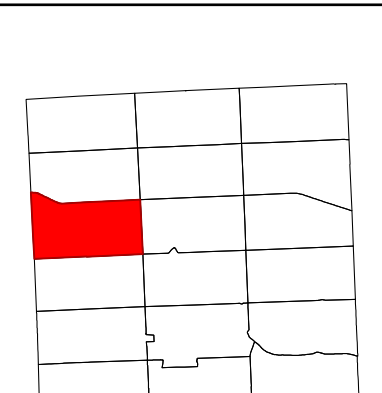
LEGEND

- 43.1 Parcel Lot Number
- 3.12 Previous Lot Number
- 4.3 Subdivision Lot Number
- 5.6 Ac Deed/Survey Acreage
- 2.11 Ac C Computed Acreage
- 18.50 Ac G Grouped (Total) Acreage
- 100s Scaled (Calculated) Acreage
- 100d Deed Dimension

TOWN OF ENFIELD
 TOMPKINS COUNTY, N.Y.

0 175 350 700 Feet

North

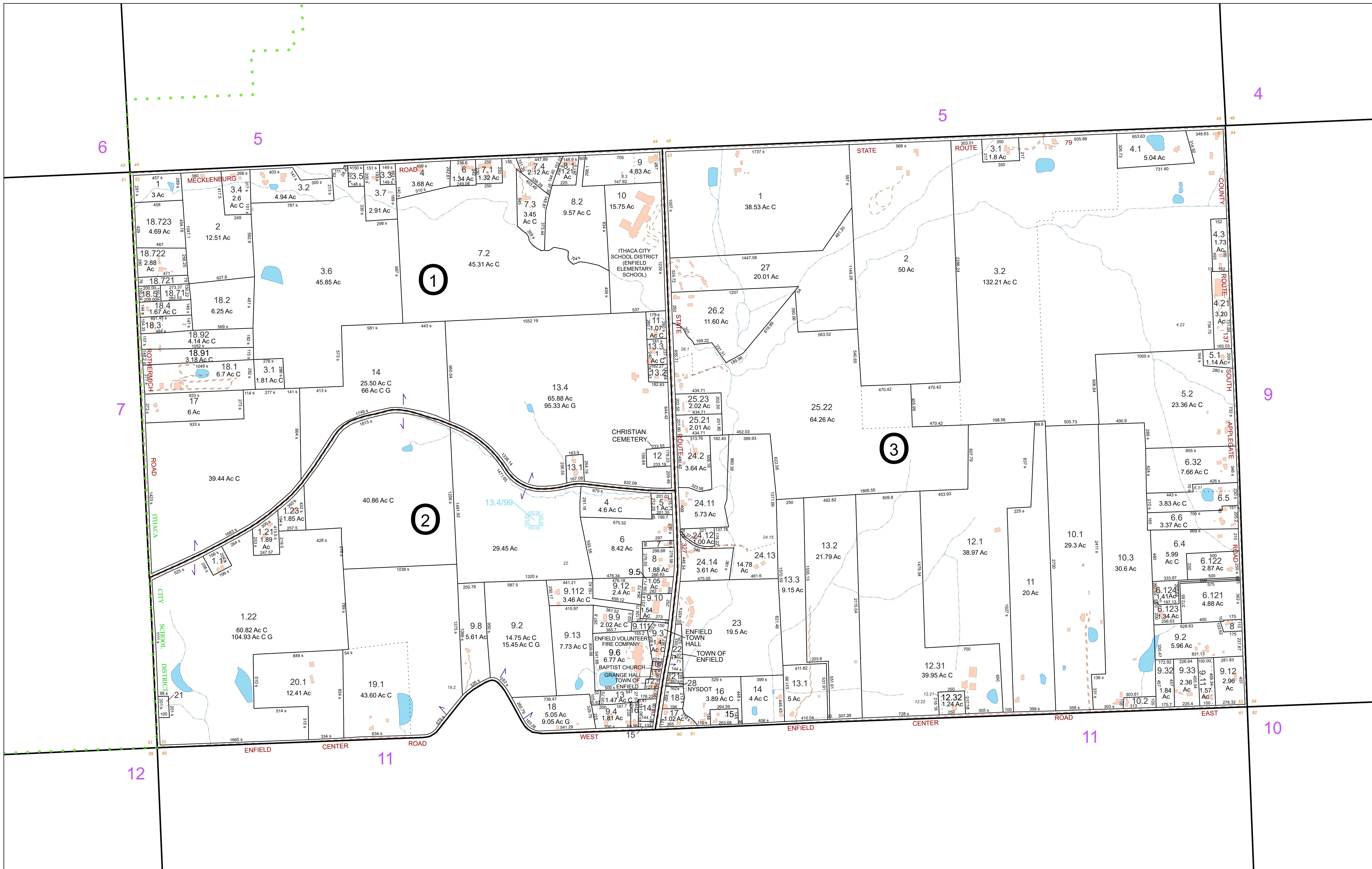


MAP: 7

SCALE: 1" = 400'

(When plotted on Arch D Media)
 11 x 17" (47%), scale is 1" = 800'

MAP REVISED: 1-JULY-2024
 MAP PRINTED: 2024



FOR TAX PURPOSES ONLY
NOT TO BE USED FOR CONVEYANCE

All tax maps are referenced to the New York State Plane Central Coordinate System using the 1983 North American Datum. Property lines have been registered to 1991-92 Tompkins County Digital Planimetric Base Map, and, as a result, dimensions and acreages may vary from legal descriptions. For complete legal descriptions or conveyances, please refer to the appropriate deeds and surveys.

NOTICE OF DISCLAIMER

This map represents a compilation of graphical and textual information from deeds and surveys, a digital planimetric base map, and digital conversion of hand-drawn mylar maps. Errors and omissions can occur from each of these sources, each source represents a large number of records and origins of information. As a practical matter, the County does not warrant the accuracy or completeness of the information portrayed. The end user of these maps agrees to accept the data "as is" with the full knowledge that errors and omissions may exist, and to hold harmless the County for any damages that may result from an inappropriate use of these maps.

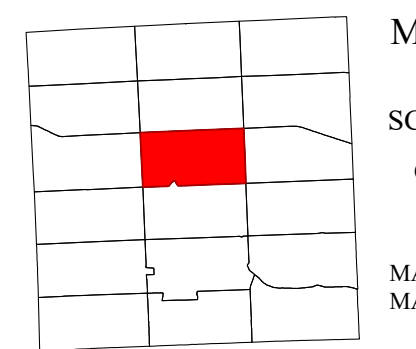
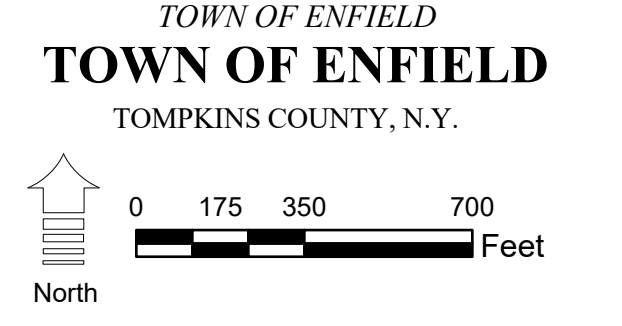
SPECIAL DISTRICT INFORMATION

- Special Districts
- Ithaca City School District
- Enfield Fire District

- Building Footprint (1991-2024)
- Curb/Pavement Line
- Railroad
- Hydrography
- Leased Suffix Account
- Municipality
- Military Tract/Watkins & Flint Lot Number

- LEGEND**
- Parcel Connector
 - Property Line
 - Former Property Line
 - Current Year Changes
 - Block Limit
 - External Tax Map
 - Block Number

- 43.1 Parcel Lot Number
- 3.12 Previous Lot Number
- 4.3 Subdivision Lot Number
- 5.6 Ac Deed/Survey Acreage
- 2.11 Ac C Computed Acreage
- 18.50 Ac G Grouped (Total) Acreage
- 100s Scaled (Calculated) Acreage
- 100d Deed Dimension

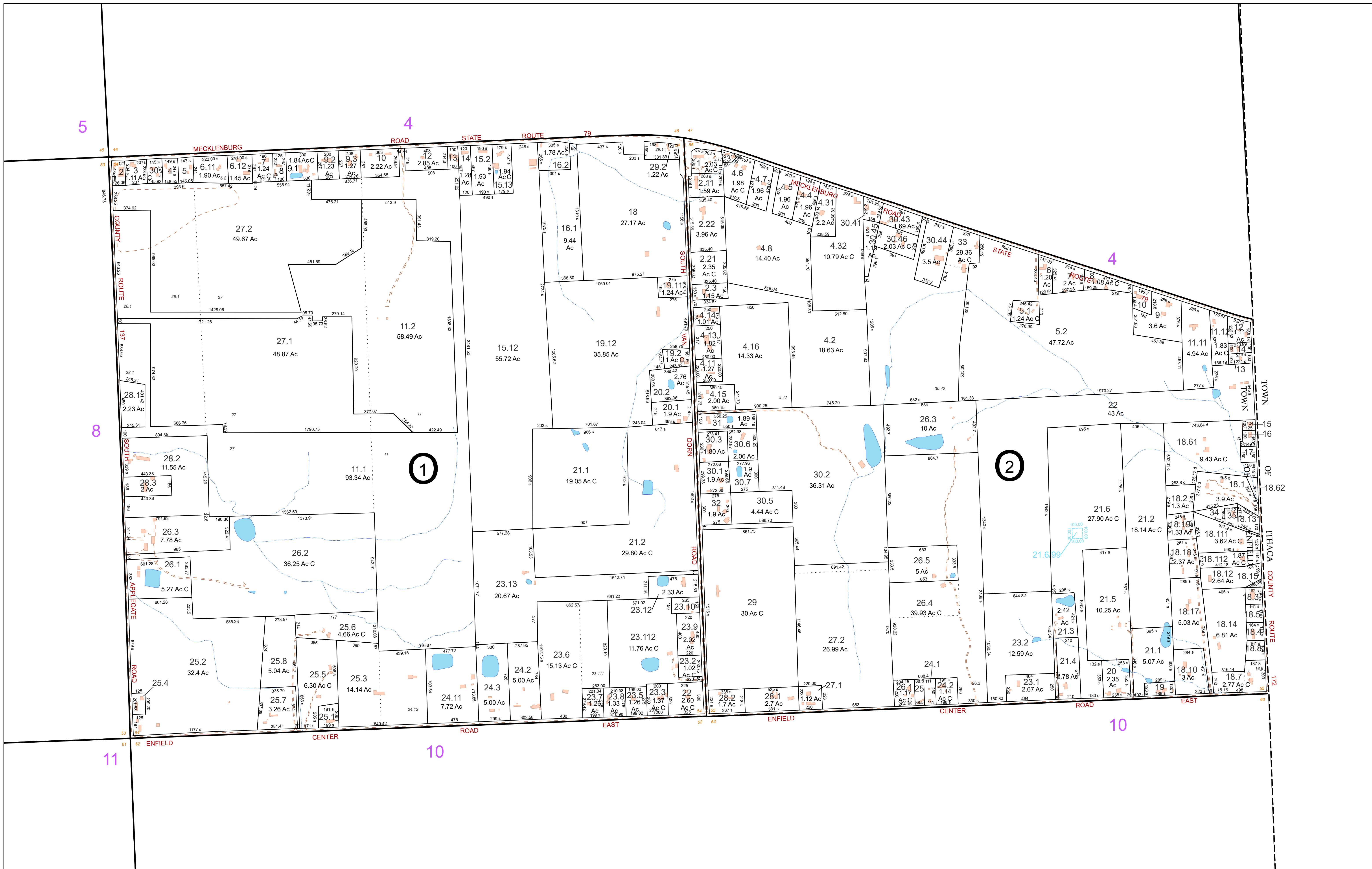


MAP: 8

SCALE: 1" = 400'

(When plotted on Arch D Media)
 11 x 17" (47%), scale is 1" = 800'

MAP REVISED: 1-JULY-2024
 MAP PRINTED: 2024



FOR TAX PURPOSES ONLY
 NOT TO BE USED FOR CONVEYANCE

All tax maps are referenced to the New York State Plane Central Coordinate System using the 1983 North American Datum. Property lines have been registered to 1991-92 Tompkins County Digital Planimetric Base Map, and, as a result, dimensions and acreages may vary from legal descriptions. For complete legal descriptions or conveyances, please refer to the appropriate deeds and surveys.

NOTICE OF DISCLAIMER

This map represents a compilation of graphical and textual information from deeds and surveys, a digital planimetric base map, and digital conversion of hand-drawn mylar maps. Errors and omissions can occur from each of these sources, each source represents a large number of records and origins of information. As a practical matter, the County does not warrant the accuracy or completeness of the information portrayed. The end user of these maps agrees to accept the data "as is" with the full knowledge that errors and omissions may exist, and to hold harmless the County for any damages that may result from an inappropriate use of these maps.

SPECIAL DISTRICT INFORMATION

Special Districts

Ithaca City School District
 Enfield Fire District

- Building Footprint (1991-2024)
- Curb/Pavement Line
- Railroad
- Hydrography
- Leased Suffix Account
- Municipality
- Military Tract/Watkins & Flint Lot Number

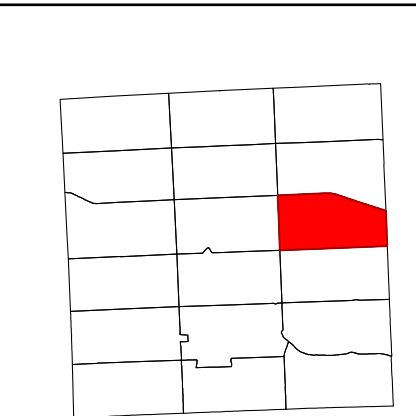
- LEGEND**
- Parcel Connector
 - Property Line
 - Former Property Line
 - Current Year Changes
 - Block Limit
 - External Tax Map
 - Block Number

- 43.1** Parcel Lot Number
- 3 12** Previous Lot Number
- A 3** Subdivision Lot Number
- 5.6 Ac** Deed/Survey Acreage
- 2.11 Ac C** Computed Acreage
- 18.50 Ac G** Grouped (Total) Acreage
- 100s** Scaled (Calculated) Acreage
- 100d** Deed Dimension

TOWN OF ENFIELD
 TOMPKINS COUNTY, N.Y.

0 175 350 700 Feet

North

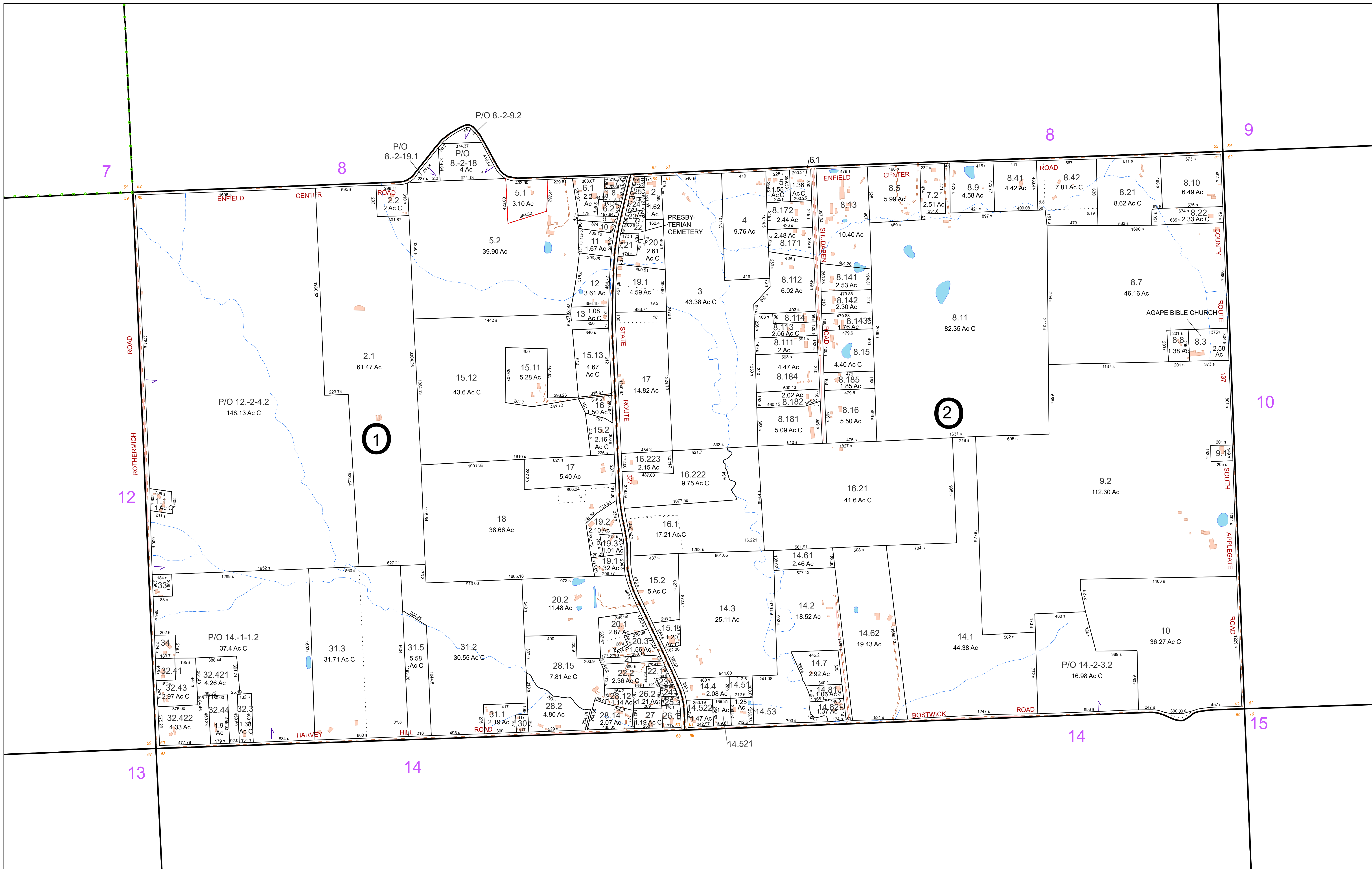


MAP: 9

SCALE: 1" = 400'

(When plotted on Arch D Media)
 11 x 17" (47%), scale is 1" = 800'

MAP REVISED: 1-JULY-2024
 MAP PRINTED: 1-JULY-2024



FOR TAX PURPOSES ONLY
 NOT TO BE USED FOR CONVEYANCE

All tax maps are referenced to the New York State Plane Central Coordinate System using the 1983 North American Datum. Property lines have been registered to 1991-92 Tompkins County Digital Planimetric Base Map, and, as a result, dimensions and acreages may vary from legal descriptions. For complete legal descriptions or conveyances, please refer to the appropriate deeds and surveys.

NOTICE OF DISCLAIMER

This map represents a compilation of graphical and textual information from deeds and surveys, a digital planimetric base map, and digital conversion of hand-drawn mylar maps. Errors and omissions can occur from each of these sources, each source represents a large number of records and origins of information. As a practical matter, the County does not warrant the accuracy or completeness of the information portrayed. The end user of these maps agrees to accept the data "as is" with the full knowledge that errors and omissions may exist, and to hold harmless the County for any damages that may result from an inappropriate use of these maps.

SPECIAL DISTRICT INFORMATION

Special Districts

- Ithaca City School District
- Enfield Fire District

LEGEND

- Building Footprint (1991-2024)
- Curb/Pavement Line
- Railroad
- Hydrography
- Leased Suffix Account
- Municipality
- Military Tract/Watkins & Flint Lot Number
- Parcel Connector
- Property Line
- Former Property Line
- Current Year Changes
- Block Limit
- External Tax Map
- Block Number

LEGEND

- Parcel Lot Number
- Previous Lot Number
- Subdivision Lot Number
- Deed/Survey Acreage
- Computed Acreage
- Grouped (Total) Acreage
- Scaled (Calculated) Acreage
- Deed Dimension

TOWN OF ENFIELD
 TOMPKINS COUNTY, N.Y.

0 175 350 700 Feet

North

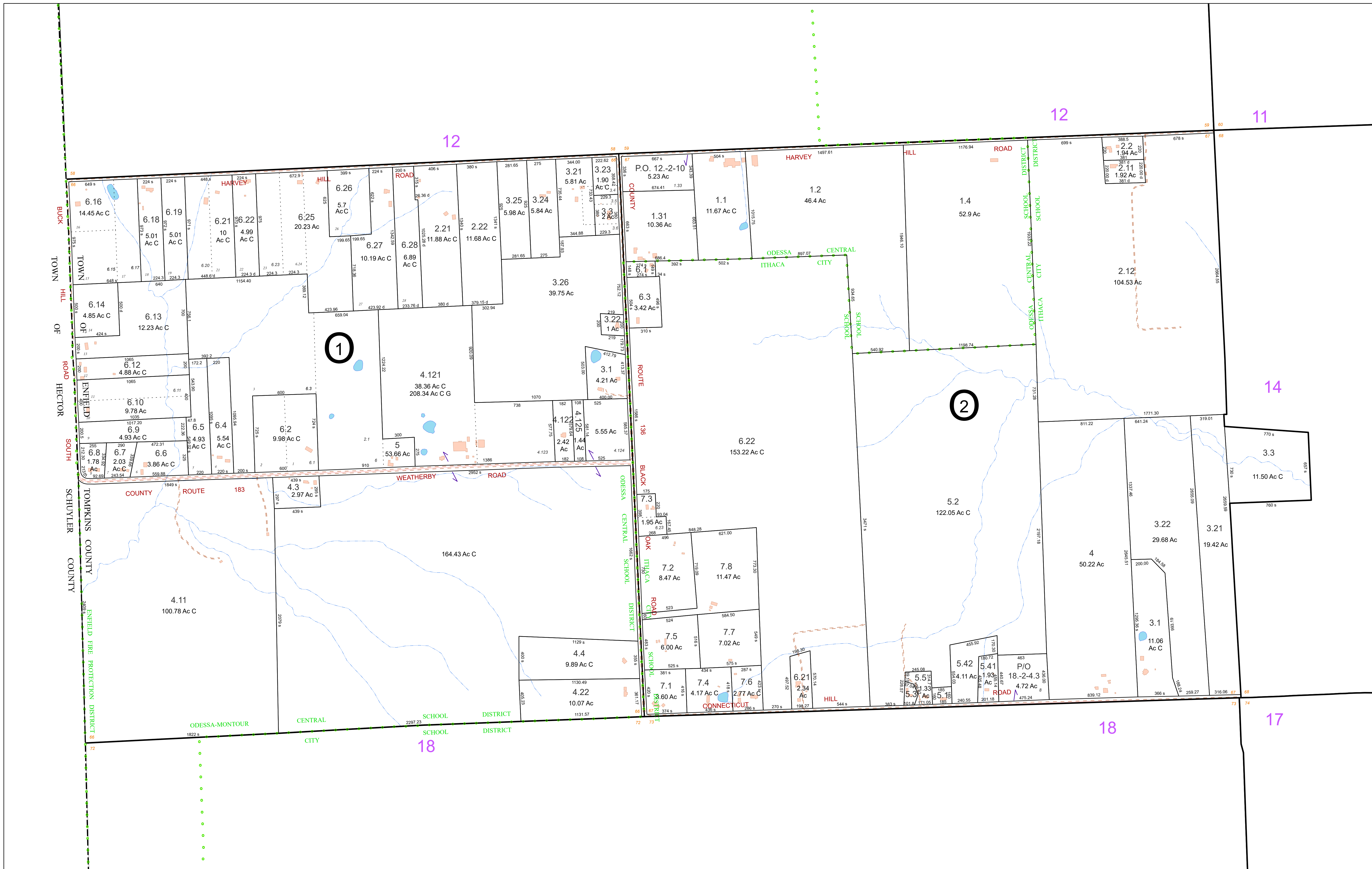
TOWN OF ENFIELD
 TOMPKINS COUNTY, N.Y.

MAP: 11

SCALE: 1" = 400'

(When plotted on Arch D Media)
 11 x 17" (47%), scale is 1" = 800'

MAP REVISED: 1-JULY-2024
 MAP PRINTED: 1-JULY-2024



FOR TAX PURPOSES ONLY
 NOT TO BE USED FOR CONVEYANCE

All tax maps are referenced to the New York State Plane Central Coordinate System using the 1983 North American Datum. Property lines have been registered to 1991-92 Tompkins County Digital Planimetric Base Map, and, as a result, dimensions and acreages may vary from legal descriptions. For complete legal descriptions or conveyances, please refer to the appropriate deeds and surveys.

NOTICE OF DISCLAIMER

This map represents a compilation of graphical and textual information from deeds and surveys, a digital planimetric base map, and digital conversion of hand-drawn mylar maps. Errors and omissions can occur from each of these sources, each source represents a large number of records and origins of information. As a practical matter, the County does not warrant the accuracy or completeness of the information portrayed. The user of these maps agrees to accept the data "as is" with the full knowledge that errors and omissions may exist, and to hold harmless the County for any damages that may result from an inappropriate use of these maps.

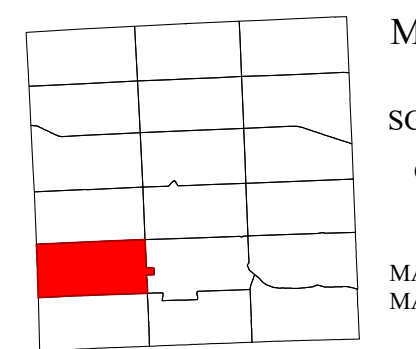
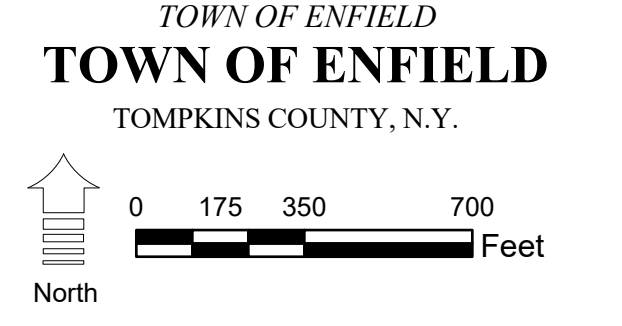
SPECIAL DISTRICT INFORMATION

- Special Districts
- Odessa-Montour Central School District
- Enfield Fire District

- Building Footprint (1991-2024)
- Curb/Pavement Line
- Railroad
- Hydrography
- Leased Suffix Account
- Municipality
- Military Tract/Watkins & Flint Lot Number

- LEGEND**
- Parcel Connector
 - Property Line
 - Former Property Line
 - Current Year Changes
 - Block Limit
 - External Tax Map
 - Block Number

- 43.1** Parcel Lot Number
- 3.12** Previous Lot Number
- 4.3** Subdivision Lot Number
- 5.6 Ac** Deed/Survey Acreage
- 2.11 Ac C** Computed Acreage
- 18.50 Ac G** Grouped (Total) Acreage
- 100s** Scaled (Calculated) Acreage
- 100d** Deed Dimension

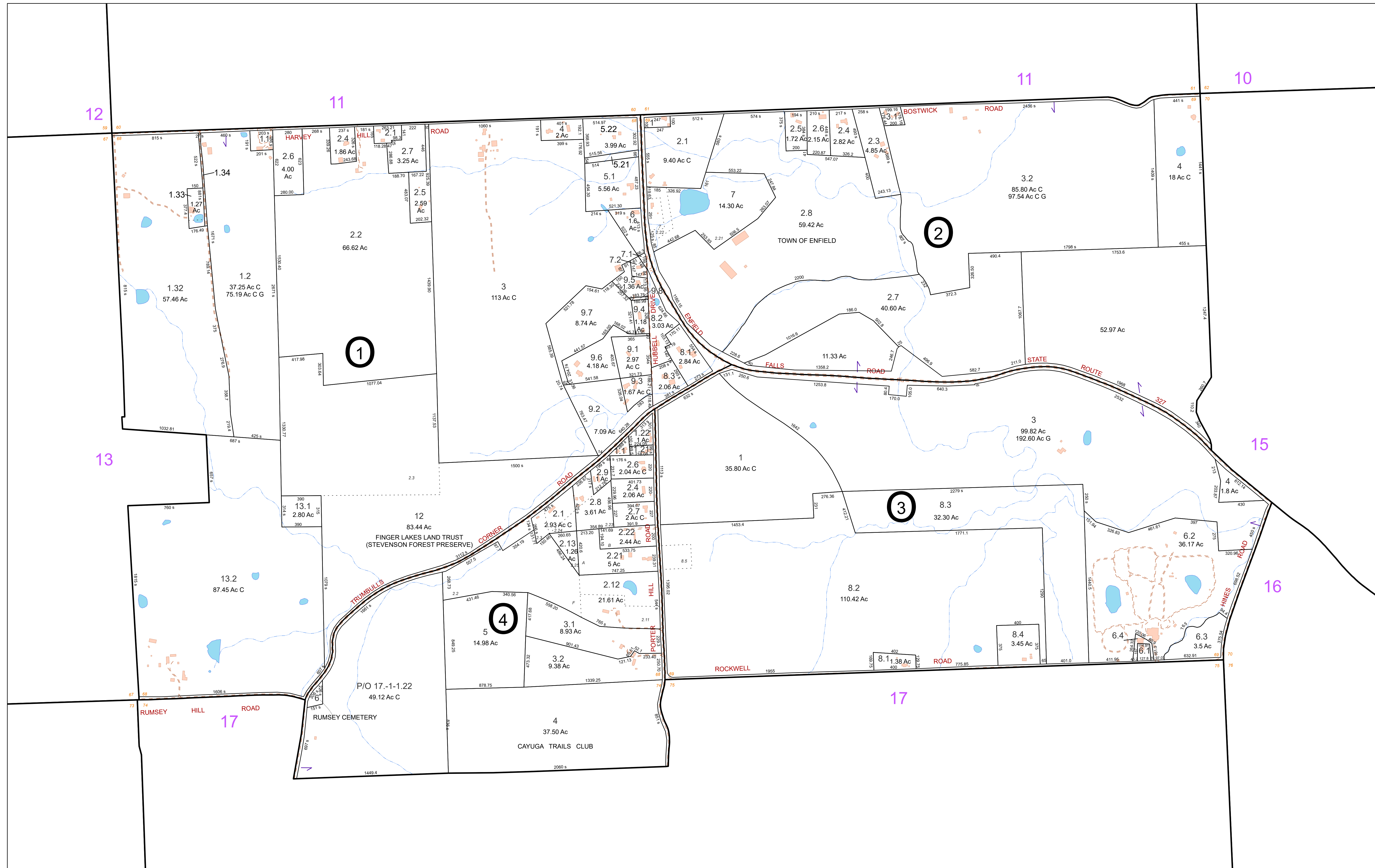


MAP: 13

SCALE: 1" = 400'

(When plotted on Arch D Media)
 11 x 17" (47%), scale is 1" = 800'

MAP REVISED: 1-JULY-2024
 MAP PRINTED: 1-JULY-2024



FOR TAX PURPOSES ONLY
NOT TO BE USED FOR CONVEYANCE

All tax maps are referenced to the New York State Plane Central Coordinate System using the 1983 North American Datum. Property lines have been registered to 1991-92 Tompkins County Digital Planimetric Base Map, and, as a result, dimensions and acreages may vary from legal descriptions. For complete legal descriptions or conveyances, please refer to the appropriate deeds and surveys.

NOTICE OF DISCLAIMER
This map represents a compilation of graphical and textual information from deeds and surveys, a digital planimetric base map, and digital conversion of hand-drawn mylar maps. Errors and omissions can occur from each of these sources, each source represents a large number of records and origins of information. As a practical matter, the County does not warrant the accuracy or completeness of the information portrayed. The user of these maps agrees to accept the data "as is" with the full knowledge that errors and omissions may exist, and to hold harmless the County for any damages that may result from an inappropriate use of these maps.

SPECIAL DISTRICT INFORMATION
Special Districts
Ithaca City School District
Enfield Fire District

- Building Footprint (1991-2024)
- Curb/Pavement Line
- Railroad
- Hydrography
- Leased Suffix Account
- Municipality
- Military Tract/Watkins & Flint Lot Number

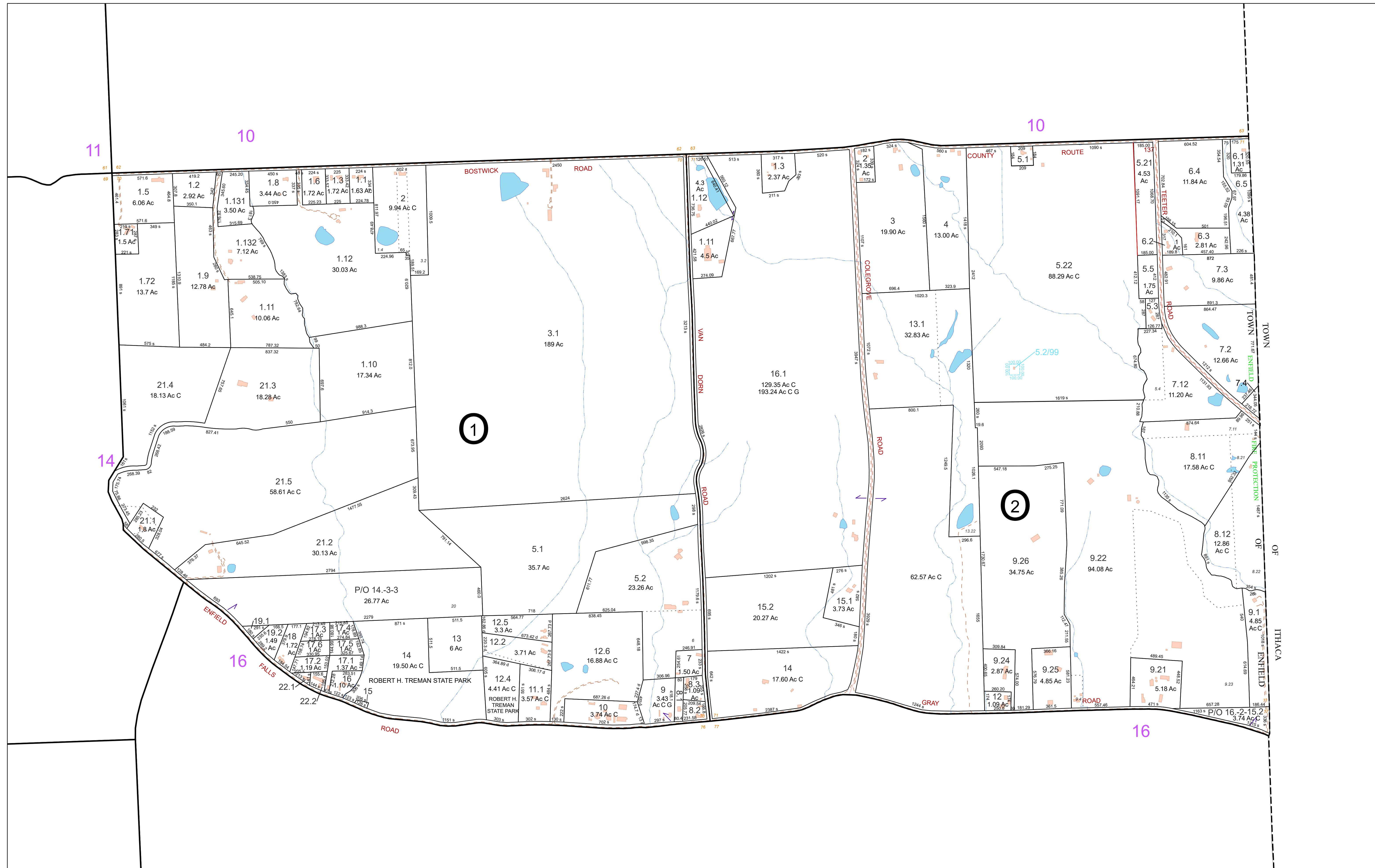
- LEGEND**
- Parcel Connector
 - Property Line
 - Former Property Line
 - Current Year Changes
 - Block Limit
 - External Tax Map
 - Block Number

- 43.1** Parcel Lot Number
- 3.12** Previous Lot Number
- 4.3** Subdivision Lot Number
- 5.6 Ac** Deed/Survey Acreage
- 2.11 Ac C** Computed Acreage
- 18.50 Ac G** Grouped (Total) Acreage
- 100s** Scaled (Calculated) Acreage
- 100d** Deed Dimension

TOWN OF ENFIELD
TOMPKINS COUNTY, N.Y.

North

MAP: 14
SCALE: 1" = 400'
(When plotted on Arch D Media)
11 x 17" (47%), scale is 1" = 800'
MAP REVISED: 1-JULY-2024
MAP PRINTED: 1-JULY-2024



FOR TAX PURPOSES ONLY
NOT TO BE USED FOR CONVEYANCE

All tax maps are referenced to the New York State Plane Central Coordinate System using the 1983 North American Datum. Property lines have been registered to 1991-92 Tompkins County Digital Planimetric Base Map, and, as a result, dimensions and acreages may vary from legal descriptions. For complete legal descriptions or conveyances, please refer to the appropriate deeds and surveys.

NOTICE OF DISCLAIMER
This map represents a compilation of graphical and textual information from deeds and surveys, a digital planimetric base map, and digital conversion of hand-drawn mylar maps. Errors and omissions can occur from each of these sources, each source represents a large number of records and origins of information. As a practical matter, the County does not warrant the accuracy or completeness of the information portrayed. The end user of these maps agrees to accept the data "as is" with the full knowledge that errors and omissions may exist, and to hold harmless the County for any damages that may result from an inappropriate use of these maps.

SPECIAL DISTRICT INFORMATION
Special Districts
Ithaca City School District
Newfield Central School District
Enfield Fire District

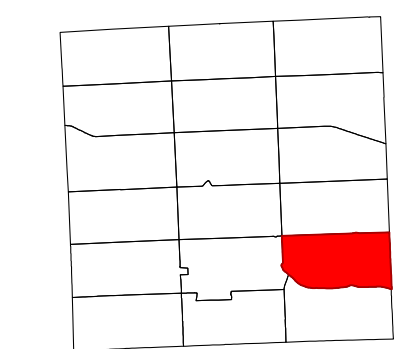
- LEGEND**
- Building Footprint (1991-2024)
 - Curb/Pavement Line
 - Railroad
 - Hydrography
 - Leased Suffix Account
 - Municipality
 - Military Tract/Watkins & Flint Lot Number
 - Parcel Connector
 - Property Line
 - Former Property Line
 - Current Year Changes
 - Block Limit
 - External Tax Map
 - Block Number

- 43.1** Parcel Lot Number
- 3.12** Previous Lot Number
- 4.3** Subdivision Lot Number
- 5.6 Ac** Deed/Survey Acreage
- 2.11 Ac C** Computed Acreage
- 18.50 Ac C** Grouped (Total) Acreage
- 100s** Scaled (Calculated) Acreage
- 100d** Deed Dimension

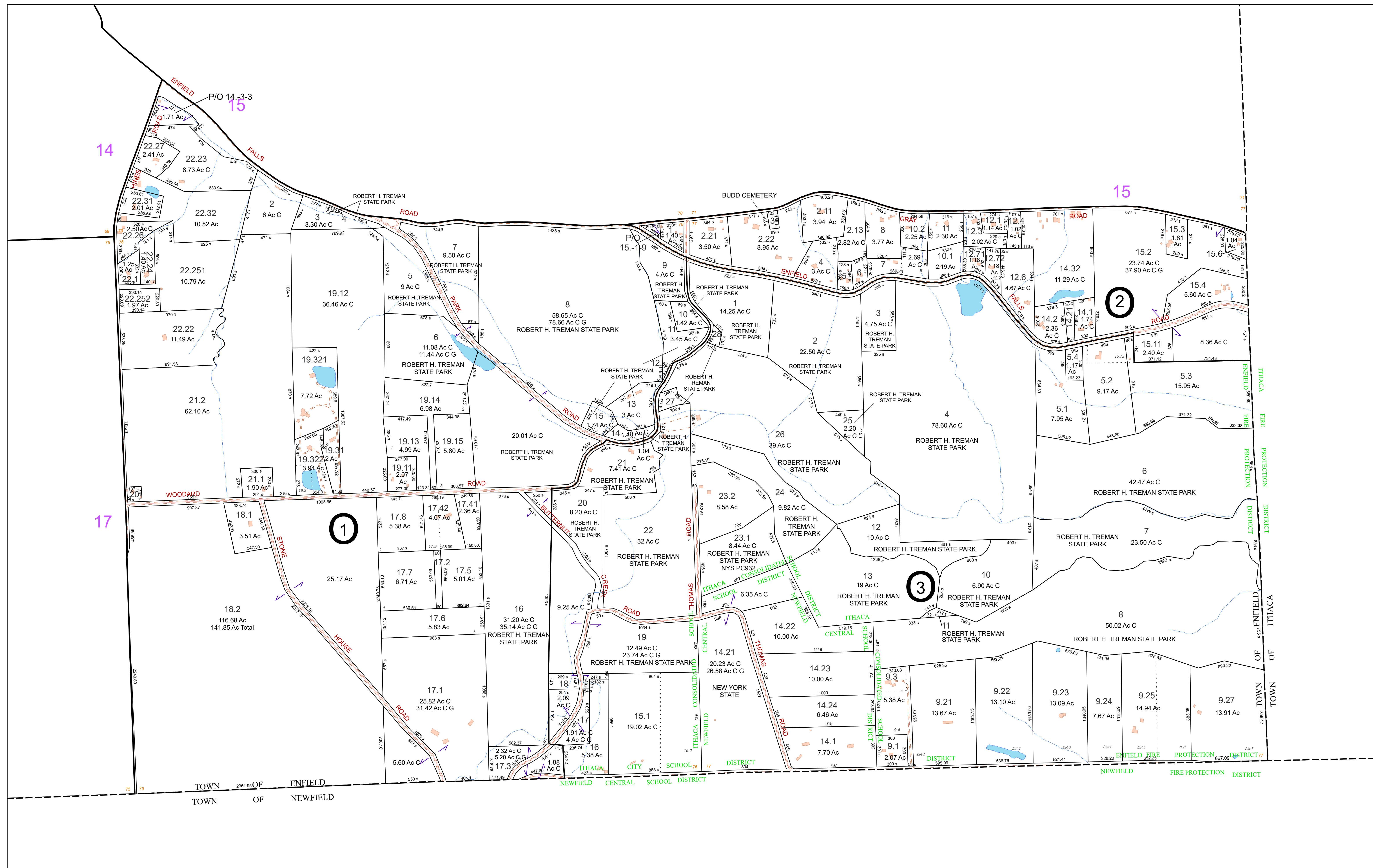
TOWN OF ENFIELD
TOMPKINS COUNTY, N.Y.

0 175 350 700 Feet

North



MAP: 15
SCALE: 1" = 400'
(When plotted on Arch D Media)
11 x 17" (47%), scale is 1" = 800'
MAP REVISED: 1-JULY-2024
MAP PRINTED: 1-JULY-2024



FOR TAX PURPOSES ONLY
NOT TO BE USED FOR CONVEYANCE

All tax maps are referenced to the New York State Plane Central Coordinate System using the 1983 North American Datum. Property lines have been registered to 1991-92 Tompkins County Digital Planimetric Base Map, and, as a result, dimensions and acreages may vary from legal descriptions. For complete legal descriptions or conveyances, please refer to the appropriate deeds and surveys.

NOTICE OF DISCLAIMER
This map represents a compilation of graphical and textual information from deeds and surveys, a digital planimetric base map, and digital conversion of hand-drawn mylar maps. Errors and omissions can occur from each of these sources, each source represents a large number of records and origins of information. As a practical matter, the County does not warrant the accuracy or completeness of the information portrayed. The end user of these maps agrees to accept the data "as is" with the full knowledge that errors and omissions may exist, and to hold harmless the County for any damages that may result from an inappropriate use of these maps.

SPECIAL DISTRICT INFORMATION
Special Districts
Newfield Central School District
Ithaca City School District
Enfield Fire District

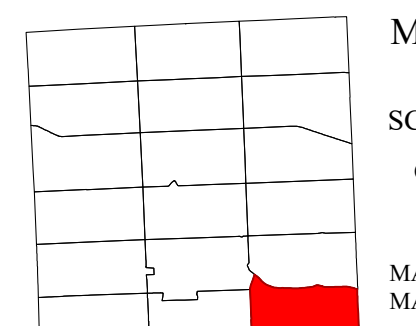
- Building Footprint (1991-2024)
- Curb/Pavement Line
- Railroad
- Hydrography
- Leased Suffix Account
- Municipality
- Military Tract/Watkins & Flint Lot Number

- LEGEND**
- Parcel Connector
 - Property Line
 - Former Property Line
 - Current Year Changes
 - Block Limit
 - External Tax Map
 - Block Number

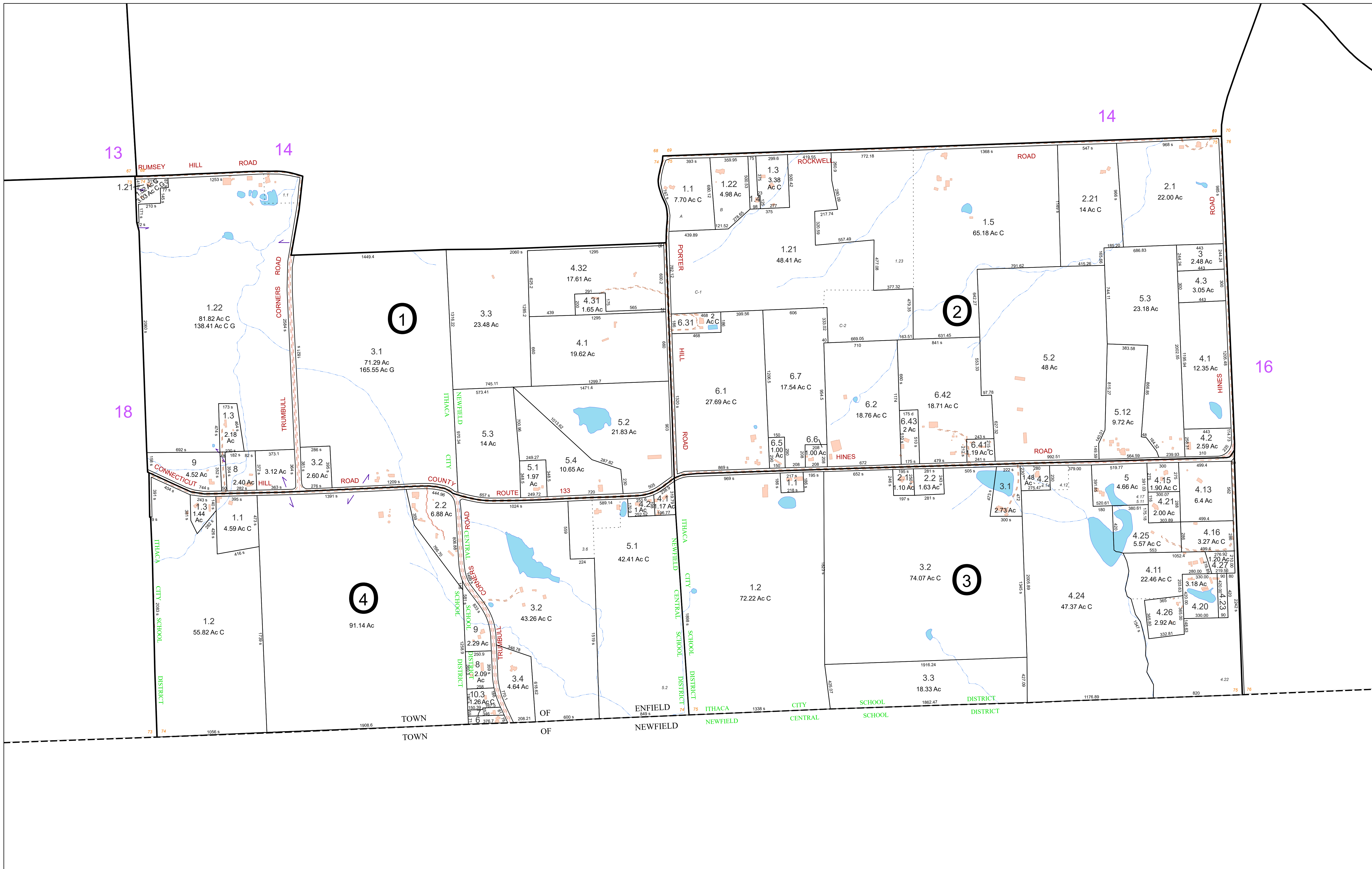
- 43.1 Parcel Lot Number
- 3.12 Previous Lot Number
- 4.3 Subdivision Lot Number
- 5.6 Ac Deed/Survey Acreage
- 2.11 Ac C Computed Acreage
- 18.50 Ac G Grouped (Total) Acreage
- 100s Scaled (Calculated) Acreage
- 100d Deed Dimension

TOWN OF ENFIELD
TOMPKINS COUNTY, N.Y.

North



MAP: 16
SCALE: 1" = 400'
(When plotted on Arch D Media)
11 x 17" (47%), scale is 1" = 800'
MAP REVISED: 1-JULY-2024
MAP PRINTED: 2-JULY-2024



FOR TAX PURPOSES ONLY
 NOT TO BE USED FOR CONVEYANCE

All tax maps are referenced to the New York State Plane Central Coordinate System using the 1983 North American Datum. Property lines have been registered to 1991-92 Tompkins County Digital Planimetric Base Map, and, as a result, dimensions and acreages may vary from legal descriptions. For complete legal descriptions or conveyances, please refer to the appropriate deeds and surveys.

NOTICE OF DISCLAIMER

This map represents a compilation of graphical and textual information from deeds and surveys, a digital planimetric base map, and digital conversion of hand-drawn mylar maps. Errors and omissions can occur from each of these sources; each source represents a large number of records and originates of information. As a practical matter, the County does not warrant the accuracy or completeness of the information portrayed. The end user of these maps agrees to accept the data "as is" with the full knowledge that errors and omissions may exist, and to hold harmless the County for any damages that may result from an inappropriate use of these maps.

SPECIAL DISTRICT INFORMATION

- Special Districts
- Newfield Central School
- Ithaca City School District
- Enfield Fire District

LEGEND

- Building Footprint (1991-2024)
- Curb/Pavement Line
- Railroad
- Hydrography
- Leased Suffix Account
- Municipality
- Military Tract/Watkins & Flint Lot Number

LEGEND

- Parcel Connector
- Property Line
- Former Property Line
- Current Year Changes
- Block Limit
- External Tax Map
- Block Number

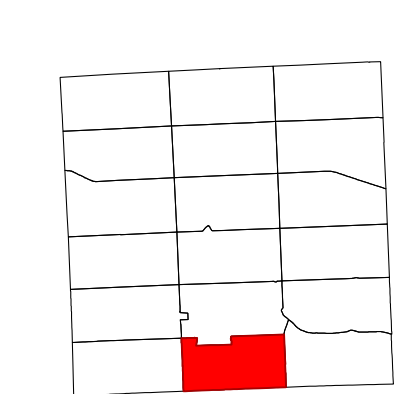
LEGEND

- 43.1 Parcel Lot Number
- 3.12 Previous Lot Number
- 4.3 Subdivision Lot Number
- 5.6 Ac Deed/Survey Acreage
- 2.11 Ac C Computed Acreage
- 18.50 Ac G Grouped (Total) Acreage
- 100s Scaled (Calculated) Acreage
- 100d Deed Dimension

TOWN OF ENFIELD
 TOMPKINS COUNTY, N.Y.

0 175 350 700 Feet

North

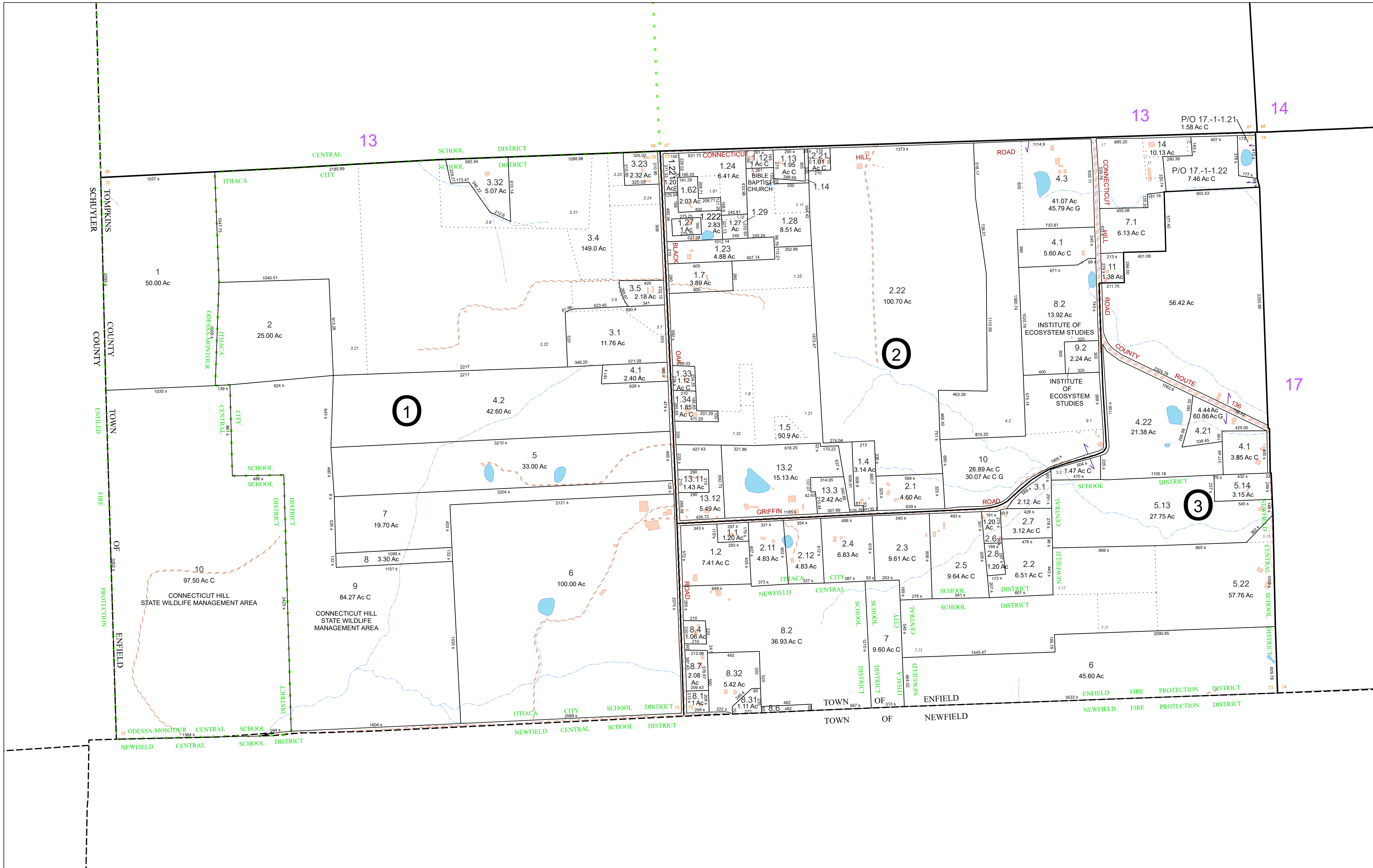


MAP: 17

SCALE: 1" = 400'

(When plotted on Arch D Media)
 11 x 17" (47%), scale is 1" = 800'

MAP REVISED: 1-JULY-2024
 MAP PRINTED: 1-JULY-2024



FOR TAX PURPOSES ONLY
NOT TO BE USED FOR CONVEYANCE
 All tax maps are referenced to the New York State Plane Central Coordinate System using the 1983 North American Datum. Property lines have been registered to 1991-92 Tompkins County Digital Planimetric Base Map, and, as a result, dimensions and acreages may vary from legal descriptions. For complete legal descriptions or conveyances, please refer to the appropriate deeds and surveys.

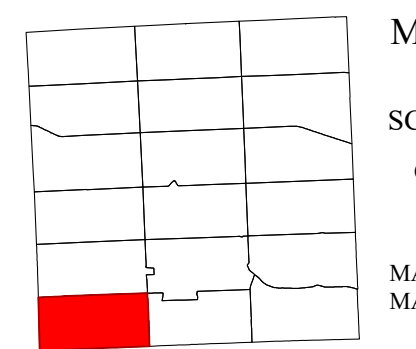
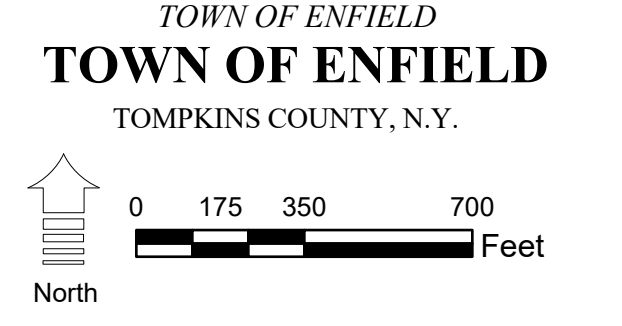
NOTICE OF DISCLAIMER
 This map represents a compilation of graphical and textual information from deeds and surveys, a digital planimetric base map, and digital conversion of hand-drawn mylar maps. Errors and omissions can occur from each of these sources, each source represents a large number of records and origins of information. As a practical matter, the County does not warrant the accuracy or completeness of the information portrayed. The end user of these maps agrees to accept the data "as is" with the full knowledge that errors and omissions may exist, and to hold harmless the County for any damages that may result from an inappropriate use of these maps.

SPECIAL DISTRICT INFORMATION
 • • • Special Districts
 Ithaca City School District
 Newfield Central School District
 Odessa-Montour Central School District
 Enfield Fire District

- Building Footprint (1991-2024)
- Curb/Pavement Line
- Railroad
- Hydrography
- Leased Suffix Account
- Municipality
- Military Tract/Watkins & Flint Lot Number

- LEGEND**
- Parcel Connector
 - Property Line
 - Former Property Line
 - Current Year Changes
 - Block Limit
 - External Tax Map
 - Block Number

- 43.1** Parcel Lot Number
- 3.12** Previous Lot Number
- 4.3** Subdivision Lot Number
- 5.6 Ac** Deed/Survey Acreage
- 2.11 Ac C** Computed Acreage
- 18.50 Ac G** Grouped (Total) Acreage
- 100s** Scaled (Calculated) Acreage
- 100d** Deed Dimension



MAP: 18
 SCALE: 1" = 400'
 (When plotted on Arch D Media)
 11 x 17" (47%), scale is 1" = 800'
 MAP REVISED: 1-JULY-2024
 MAP PRINTED: 1-JULY-2024