

An aerial photograph of a landscape. In the foreground, a dense forest with vibrant autumn foliage in shades of green, yellow, and orange borders a large, dark blue body of water. A small white boat is visible on the water's surface. In the background, a semi-transparent white box contains the title text. Beyond the box, the landscape continues with a mix of green fields, brown agricultural land, and more forested areas under a blue sky with scattered white clouds.

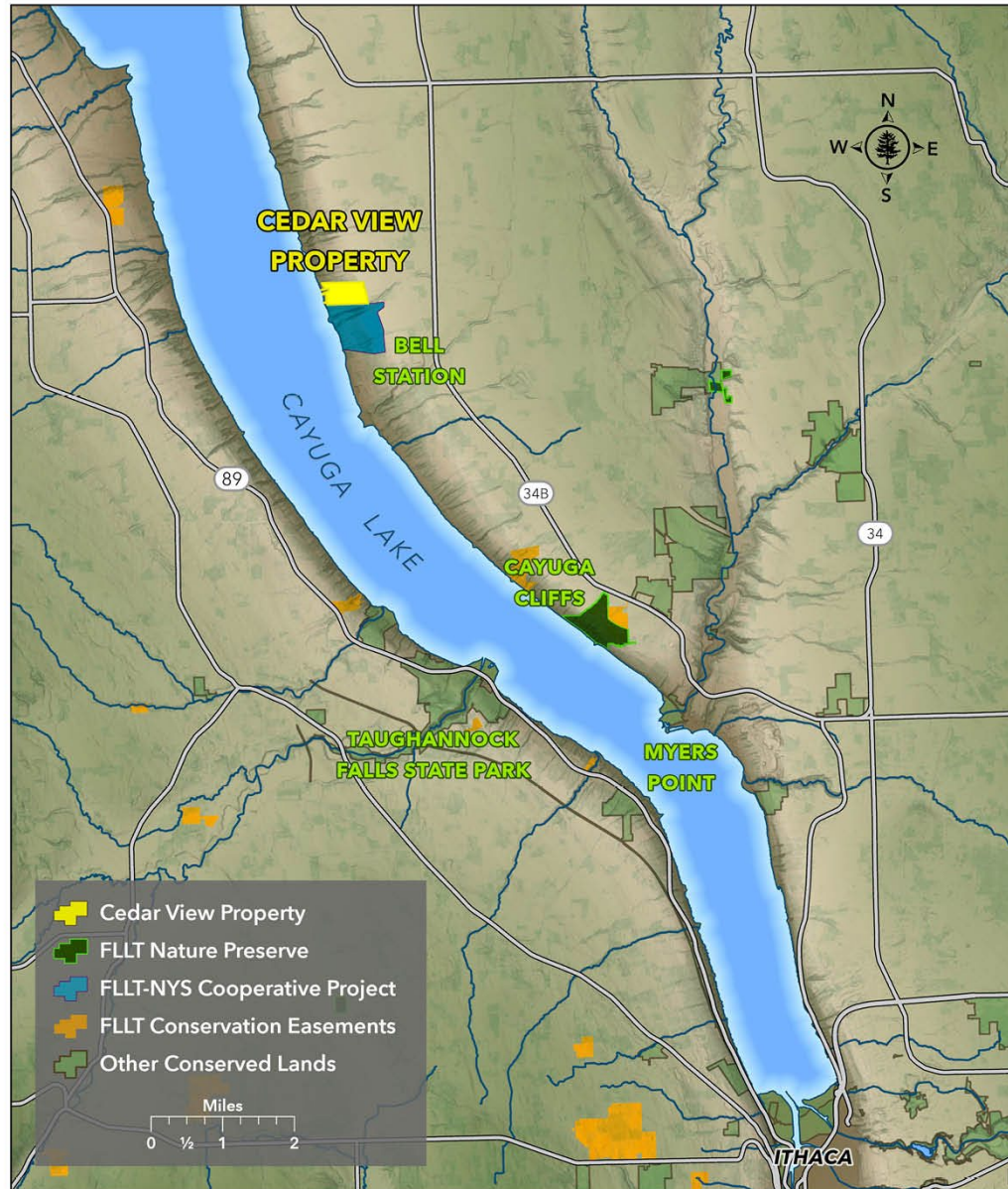
**Finger Lakes Land Trust
Progress Report
March 20, 2024**





BELL STATION: CEDAR VIEW ADDITION CONTEXT MAP

See the story and support the project at FLLT.ORG/CEDARVIEW

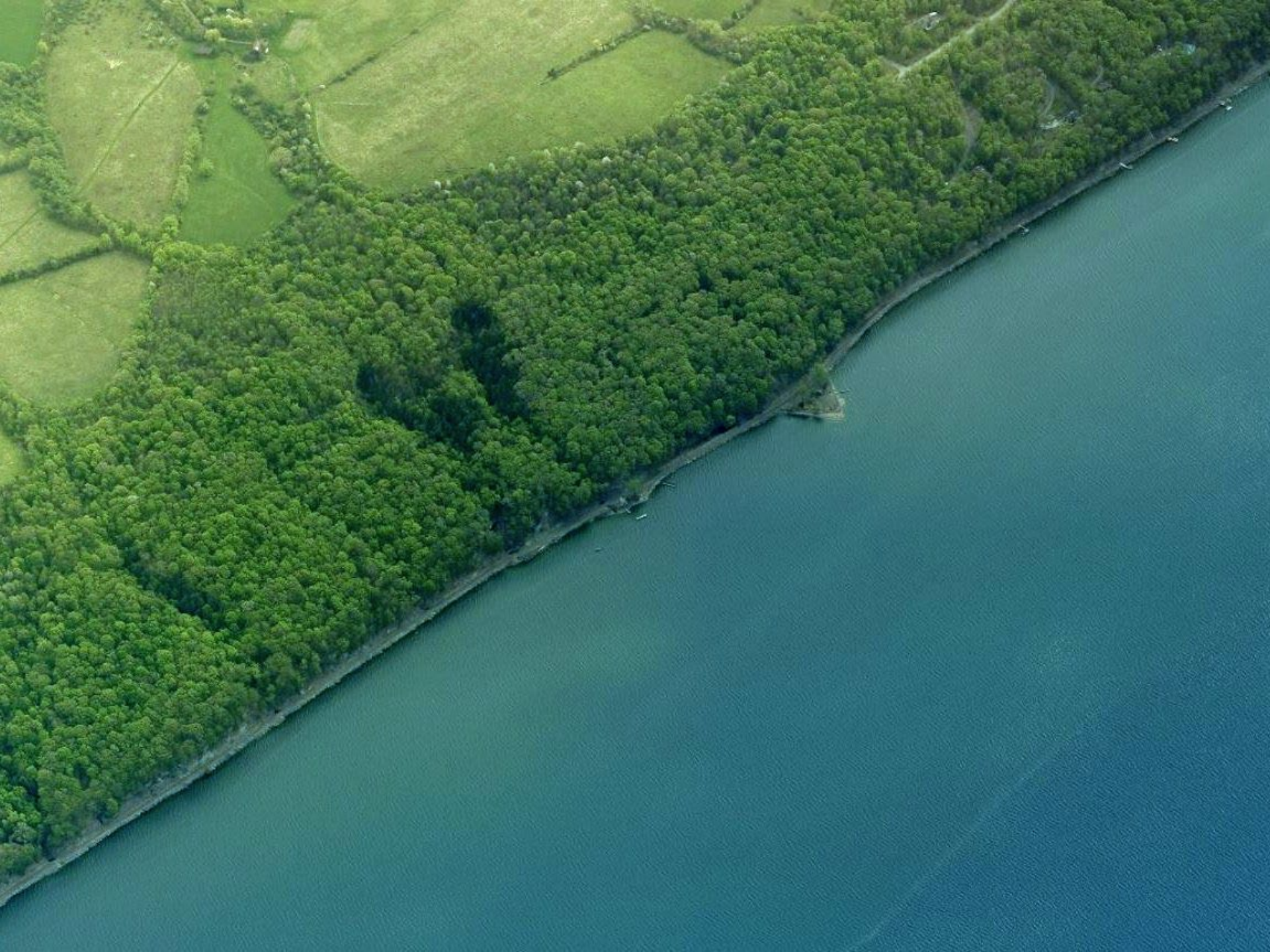




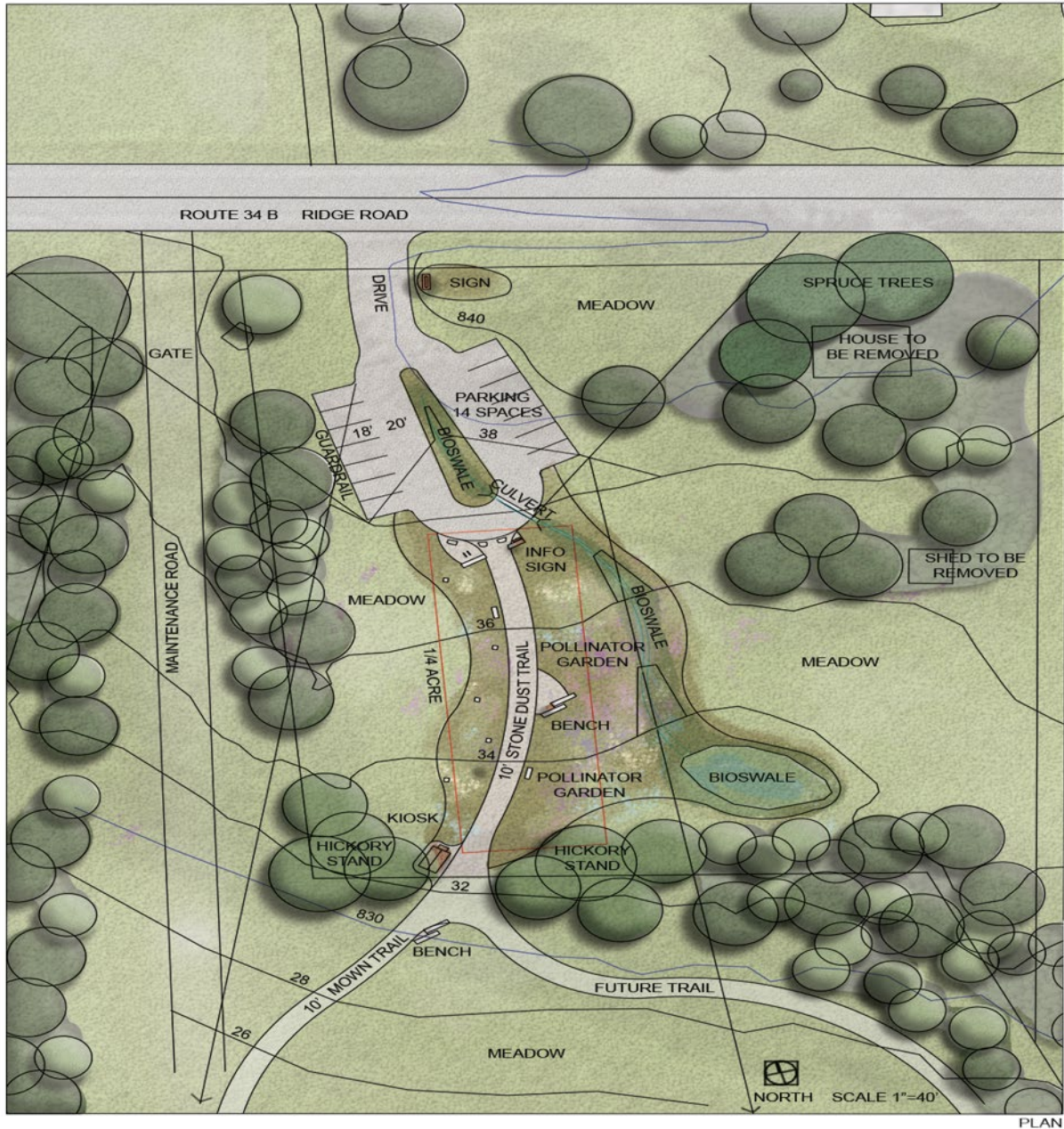












PLAN





FINGER LAKES LAND TRUST

All Land Conservation Projects | Jan 2024

Nature Preserve Tracts

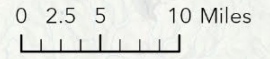
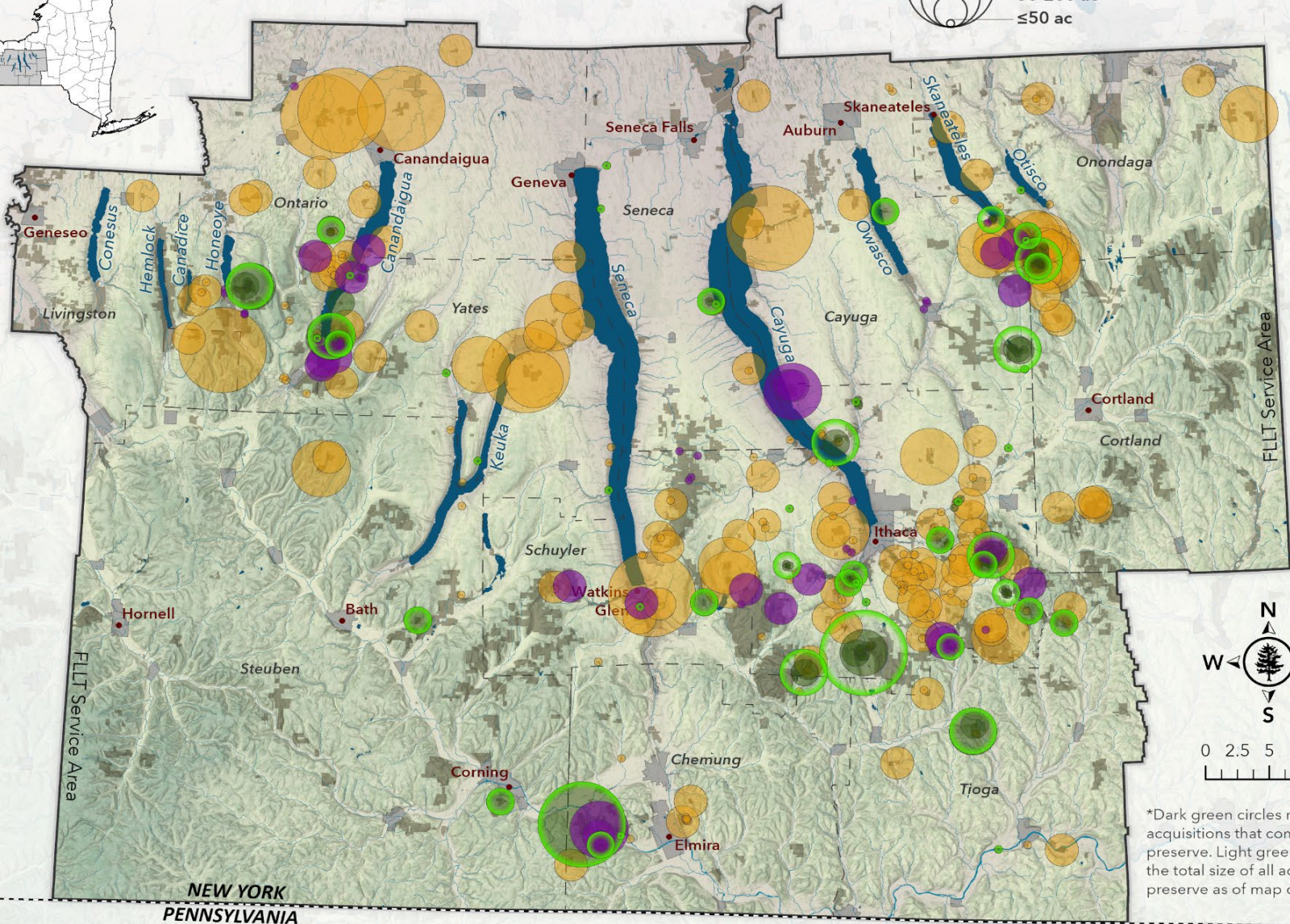
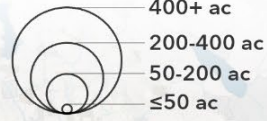


Nature Preserve
Total Size*

Conservation Easements
and Deed Restrictions



Transfers and
Cooperative Projects



*Dark green circles represent individual acquisitions that comprise a nature preserve. Light green circles represent the total size of all acquisitions in each preserve as of map date.

NEW YORK
PENNSYLVANIA





No. 642. First Fall, Lick Brook.



























Show me the **best nature trails** in the Finger Lakes region

I want to hike near a waterfall



TRAILS FOR ME >



EXPLORE HERE!

**Taughannock Falls
State Park**





