

Floodplains for Non-accredited Levee Scenario

Tompkins County, New York

Floodplain Internal Review Meeting

October 08, 2021



FEMA

Ithaca Levee

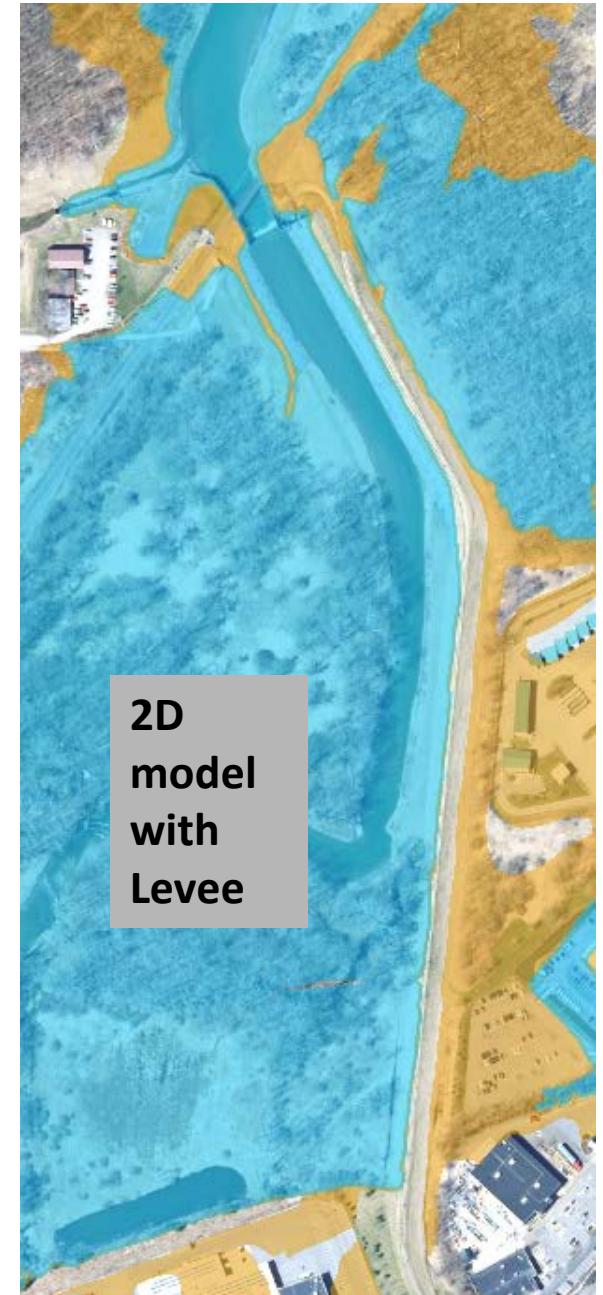
3 different paths for levee accreditation:

Provisionally Accredited Levee (PAL)

Appeal

LOMR

LOMR and PAL are not mutually exclusive. The community could work towards a PAL and then follow a schedule that results in a LOMR going effective at the same time as FY19 maps



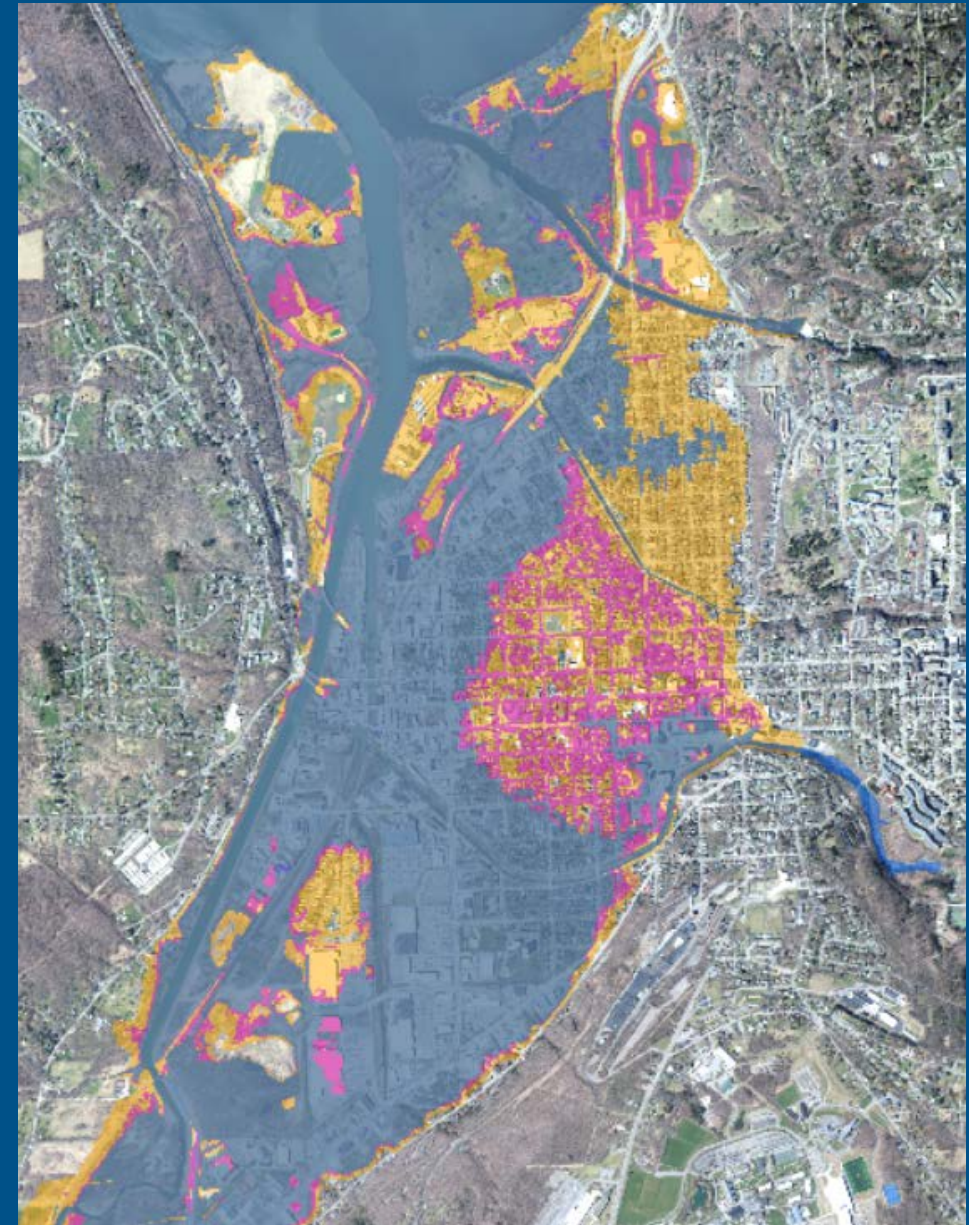
FEMA

2D Model and Shallow Flooding

- Shallow Flooding = <1ft
- Removed shallow flooding running along streets - city drainage data not in the 2D model

Legend

- Shallow Flooding <1ft
- 1% annual chance >1ft
- 0.2% annual chance



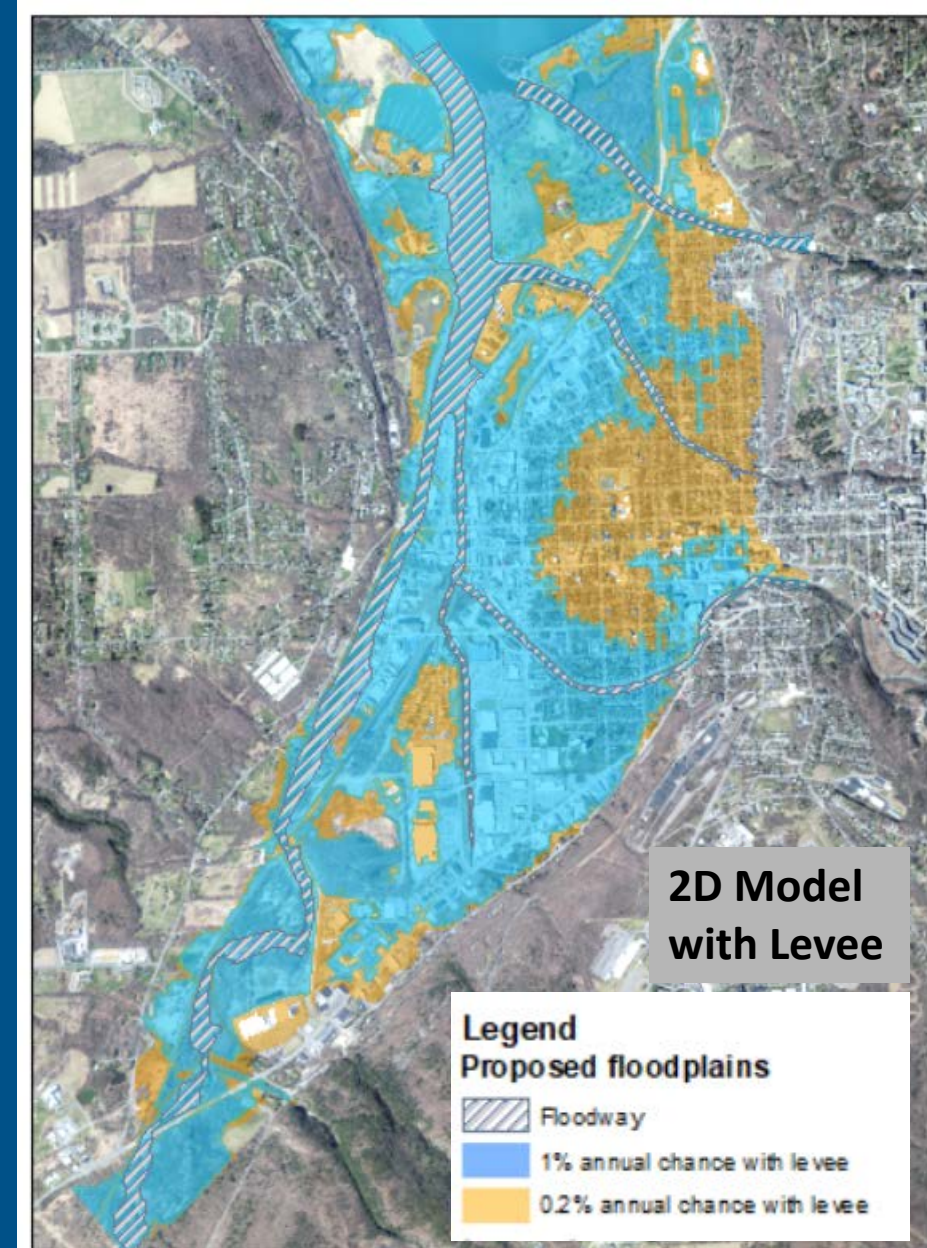
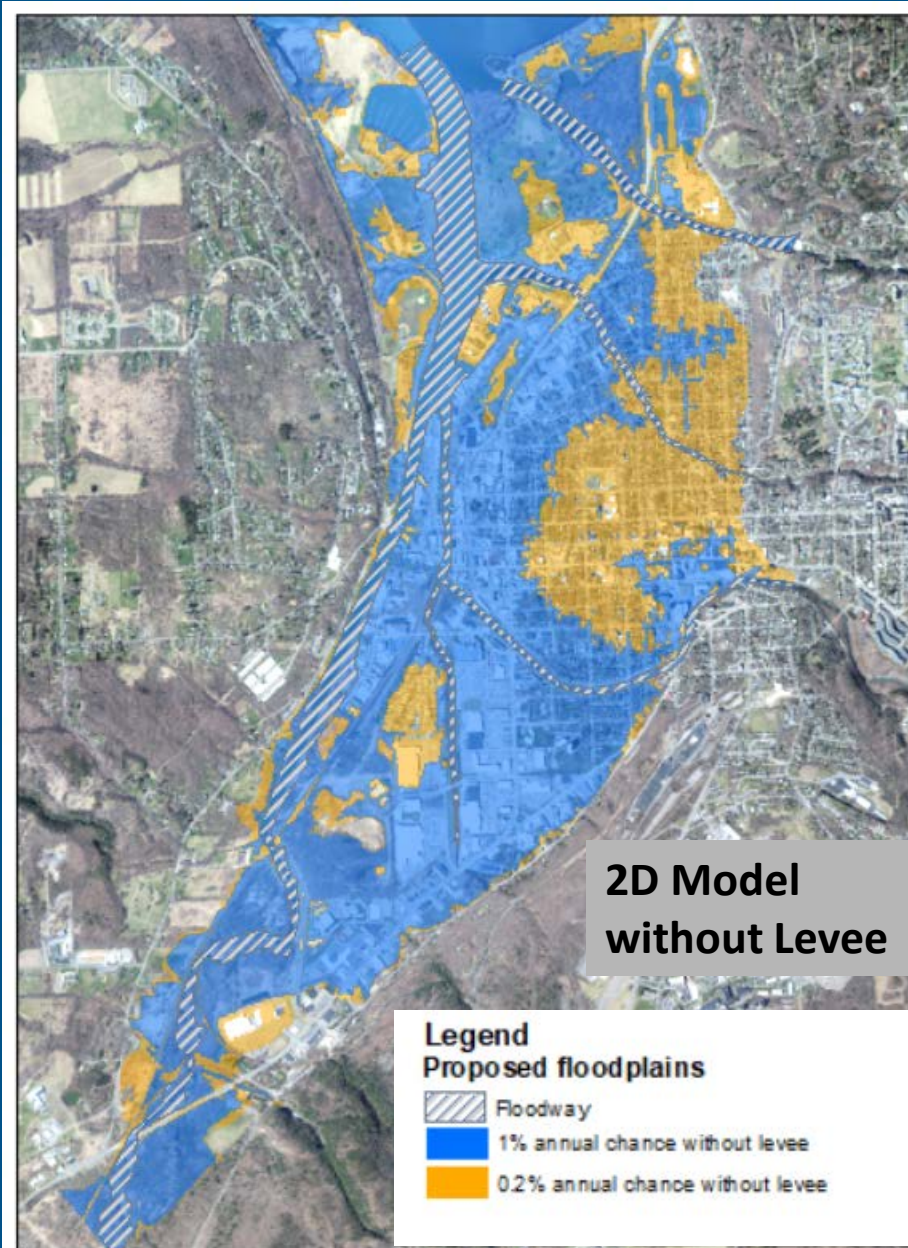
FEMA

Comparison

Without Levee and
with levee
floodplains

Not much physical
difference
between floodplain
area

Bigger difference
in water depth

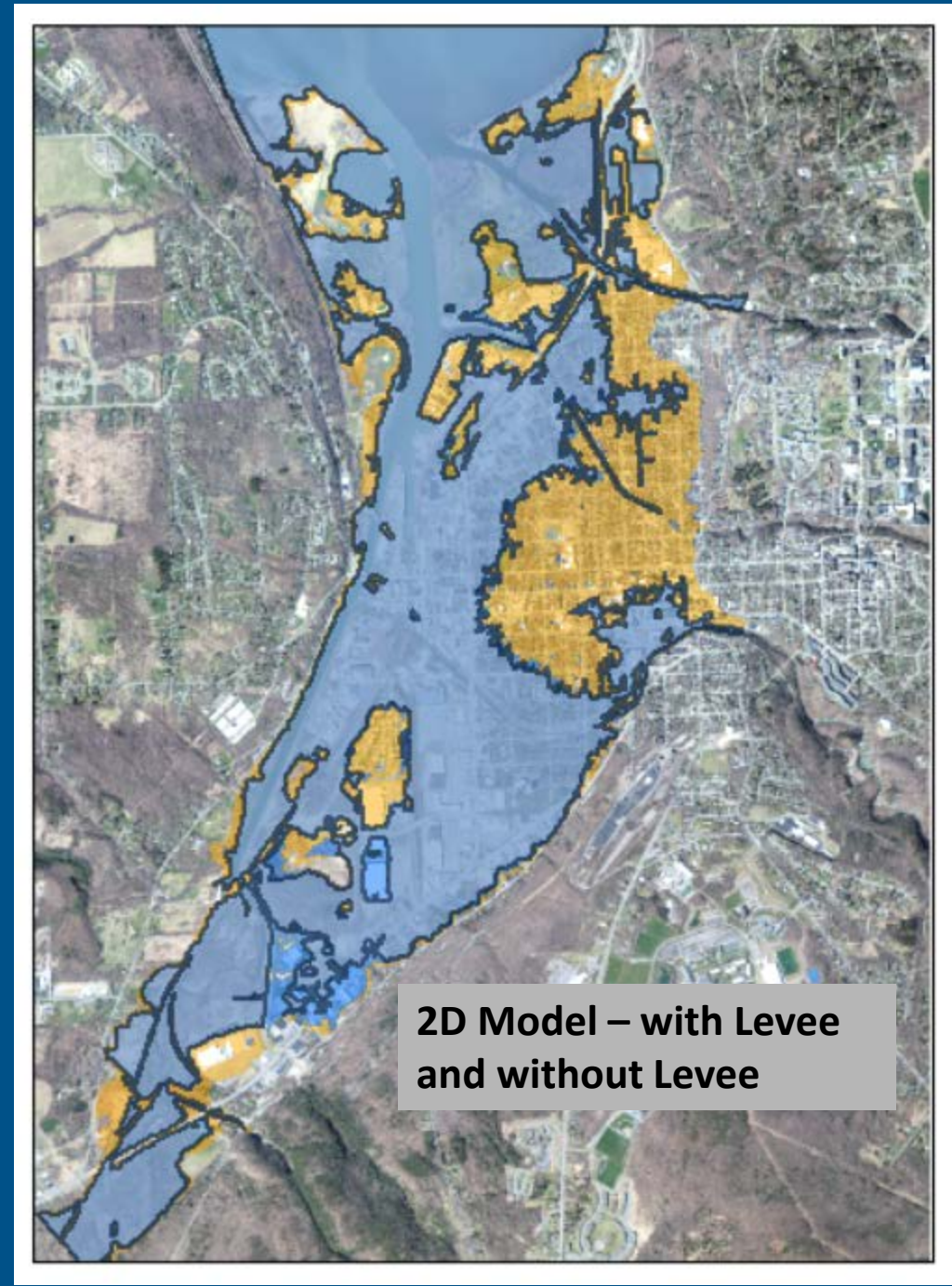
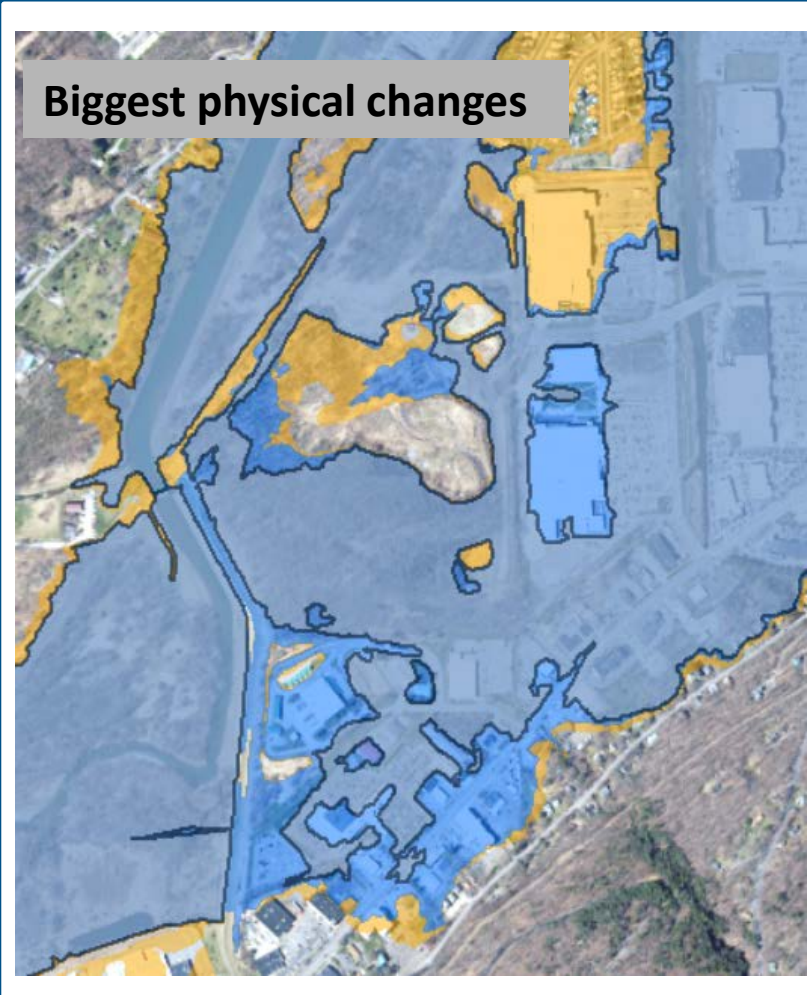


FEMA

Comparison

Biggest physical difference near levee

Floodplains without accredited Levee will show with levee scenario upstream of actual levee for most conservative approach



Comparison


- Depth difference between with and without levee


Legend

 Floodway

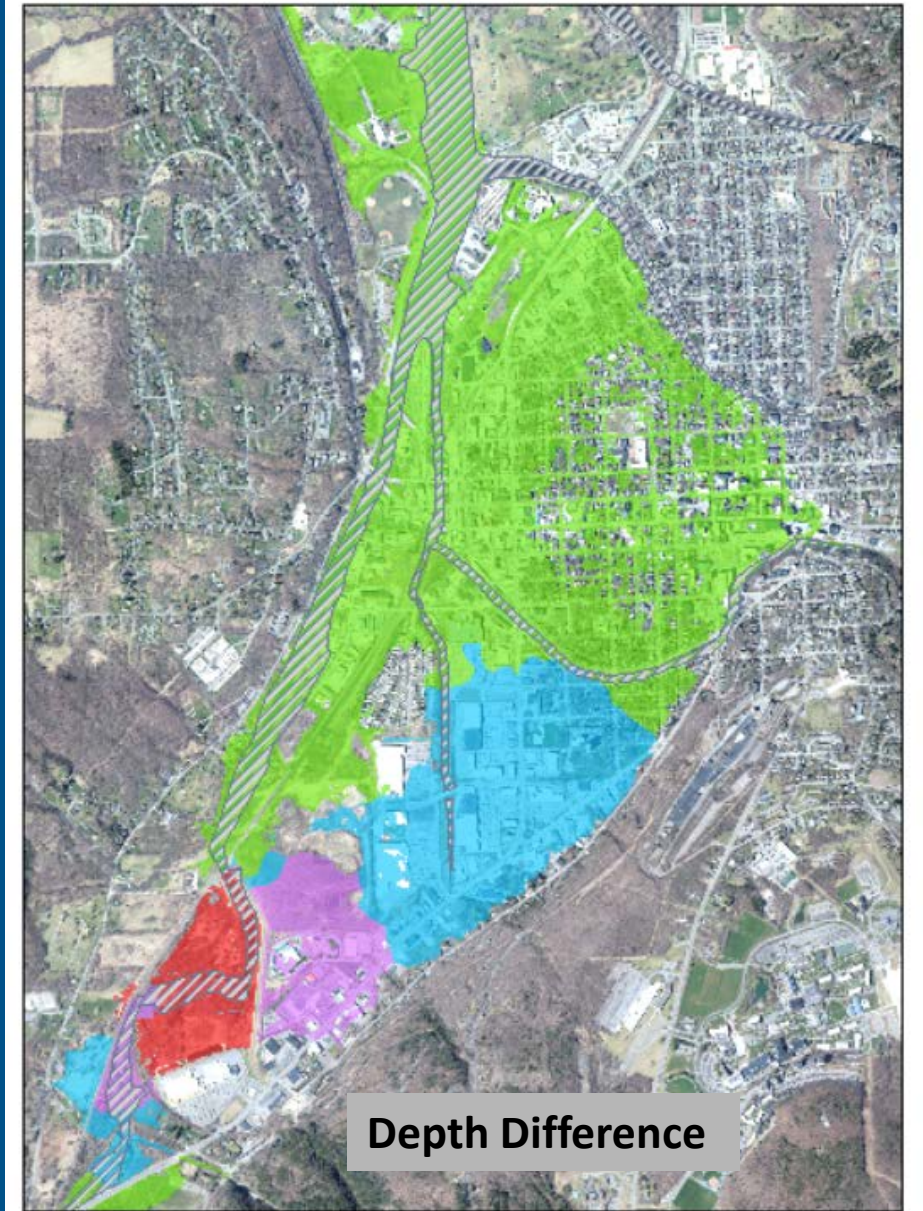
Depth difference in feet

 > 2ft

 = 1 - 2ft

 = 1/2 - 1ft

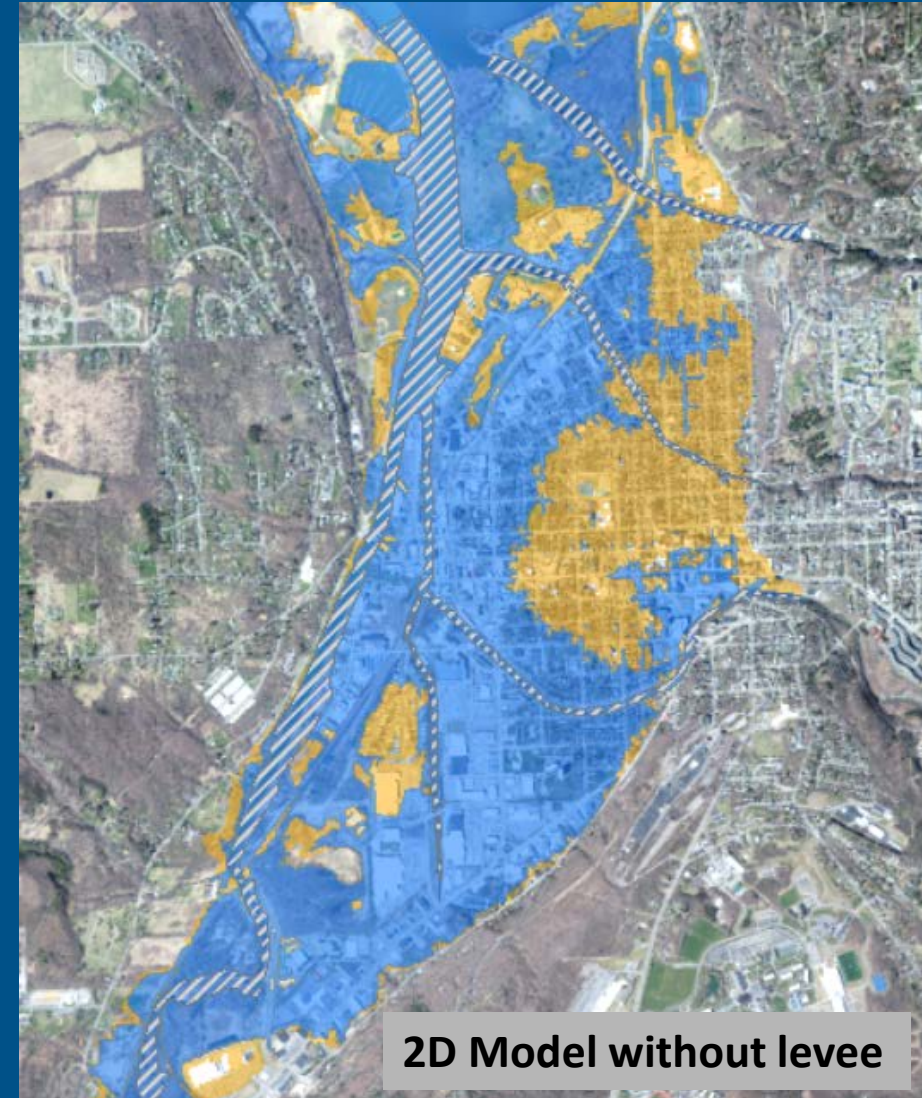
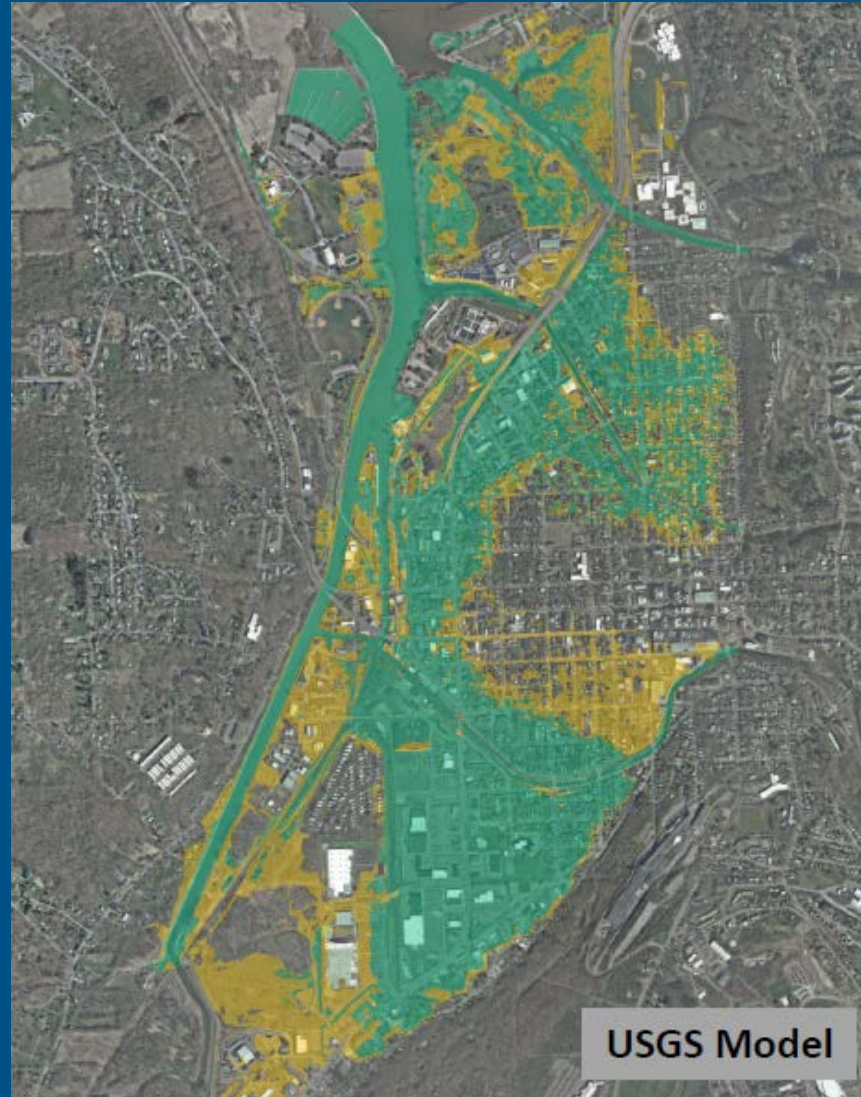
 < 1/2ft



FEMA

Comparison

For information -
Difference between
USGS model and
final FEMA model



FEMA

Questions?

- **FEMA Project Monitor**

Shudipto Rahman, PE

202 -702-4273

Shudipto.Rahman@fema.dhs.gov

- **STARRII Project Manager**

Inger Sarappo GISP, CFM

615 - 812-3597

Inger.Sarappo@stantec.com

- **STARRII Ithaca 2D Model Reviewer**

Patrick Dobbs PE

615 -794-1524

Patrick.Dobbs@stantec.com

- **STARRII Engineering Lead**

Mark Seidelmann PE, GISP, CFM, PMP

614 - 844-4015

Mark.Seidelmann@stantec.com



FEMA

Thank you!



FEMA