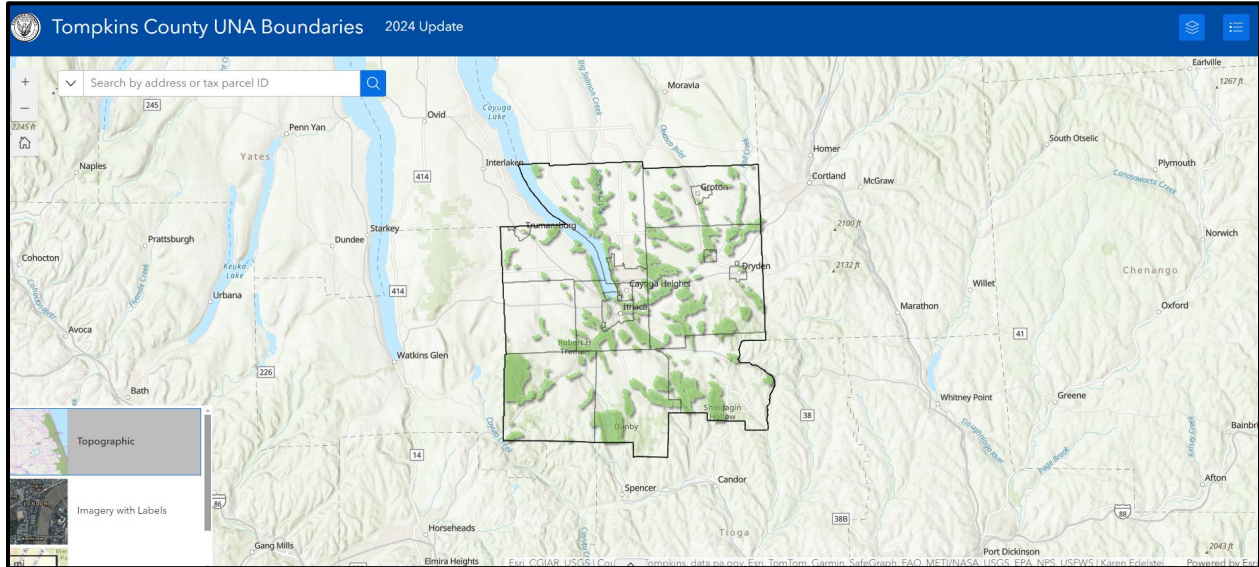


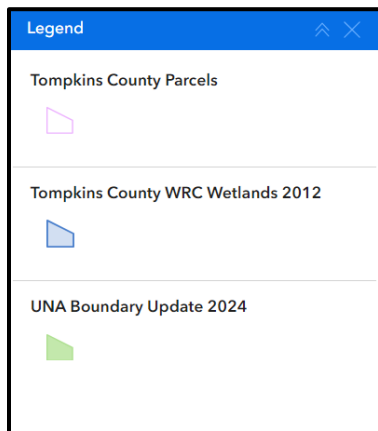
Unique Natural Areas Update Map Guide for Users

The product was specifically designed to be used by property owners whose parcels contain some portion of a Tompkins County Unique Natural Area (UNA). This map is only to be accessed by property owners whose parcels contain any portion of a UNA.



This guide is intended to assist users in learning more about the UNA(s) on their properties. The UNA boundaries shown on this map show the updates of the boundaries through 2024. The map also displays the Tompkins County WRC wetlands, and parcel, municipal and County boundaries.

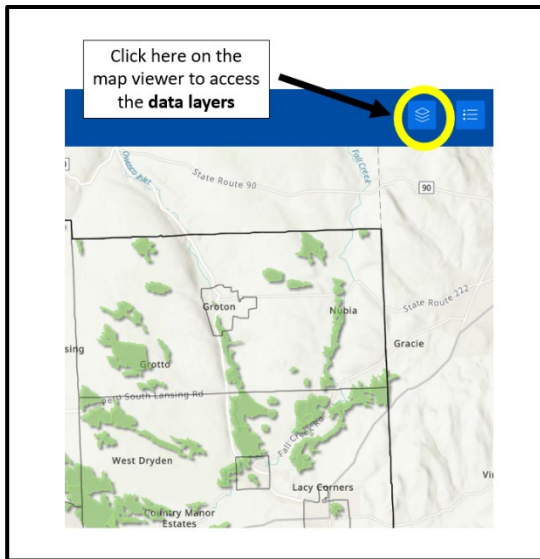
To use the map at the link located on the mailer you received, type in a house number and street name (i.e. 121 Court) or tax parcel number in the upper left hand corner's search box and then click the magnifying glass or hit enter. This will display the search results. Click on the correct search result and this will zoom to the parcel. Use the legend below to interpret the map. Use the Helpful Definitions and Using the Map Viewer sections to assist with map interpretation.



The green colored layer shows the location of the Unique Natural Areas, and the light blue layers show the Tompkins County WRC Wetlands.

If you have questions about the Unique Natural Area on your property, contact the Tompkins County Department of Planning and Sustainability at 607-274-5560.

Using the Map Viewer:



When the mapper opens, all of the layers will be visible. If you are interested in turning any of the layers off, locate the icon that looks like a stack of papers, circled below in yellow, in the top right corner of the viewer, to be able to turn the data layers on and off.



To access the legend, navigate to the item circled below in yellow in the top right corner of the map viewer.



To change the base map, navigate to the item circled below in yellow in the bottom of the map viewer, then scroll and select the base map you'd like to use.

Helpful Definitions to Interpret the Map:

Unique Natural Area (UNA) – UNAs are special places identified by the Tompkins County Environmental Management Council (EMC), a group that advises the county on environmental issues. These areas are recognized for their outstanding natural features, such as rare plants or unique geological formations. It's important to note that UNA is a descriptive term and does not confer any legal protection or regulatory status.

Tompkins County WRC Wetlands – In 2016, the Cayuga Lake Watershed Network (CLWN), with additional financial support from the Park Foundation and Tompkins County, published [Wetland Mapping for Tompkins County, New York](#). A new wetland map was developed for the entire County based on more detailed and recent information than was available to the DEC or the U.S. Army Corps of Engineers (USACE) when they produced wetland maps. In total, more than 15,000 acres of wetlands were mapped.