

The 2015 Tentative Budget

Tompkins County, New York

Economic and Fiscal Influences

Contradictory Trends

- Positive economic indicators
- Continued indications of underlying need

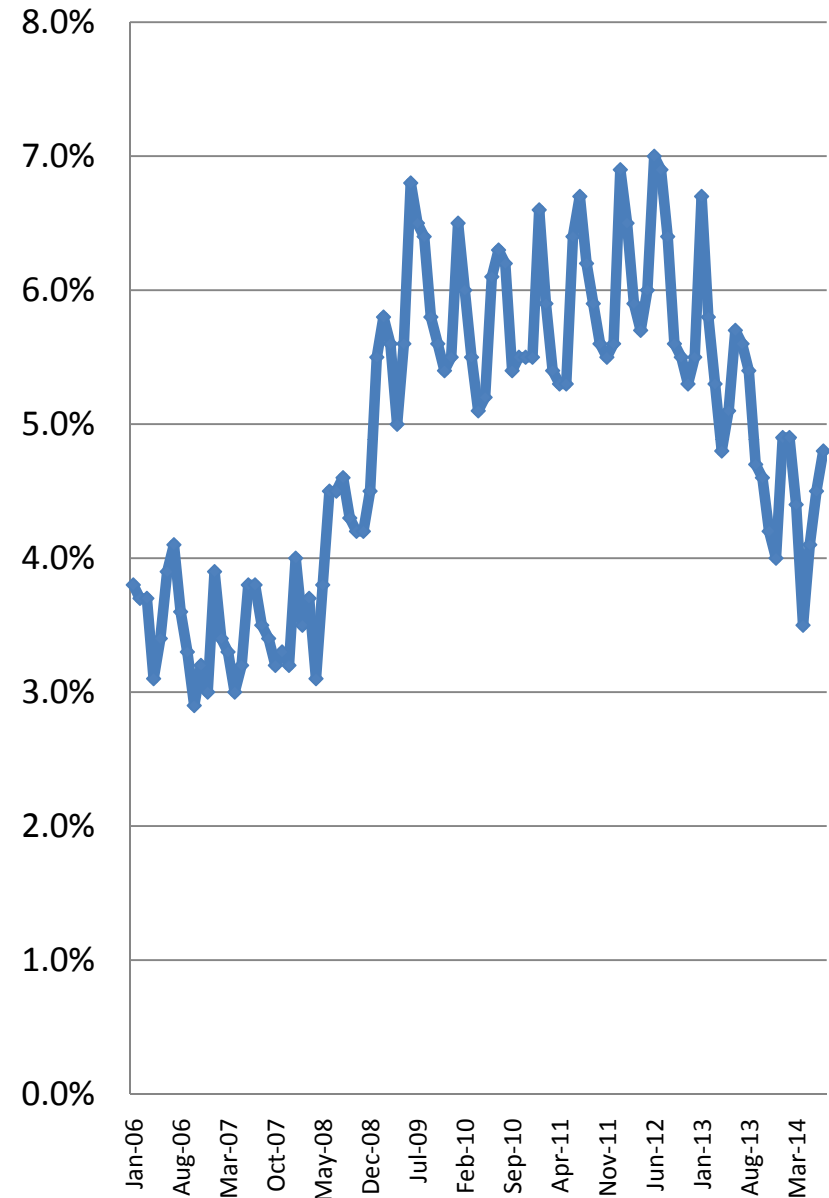
Economic and Fiscal Influences

- Positive economic indicators

Economic and Fiscal Influences

- Positive economic indicators
 - Falling unemployment

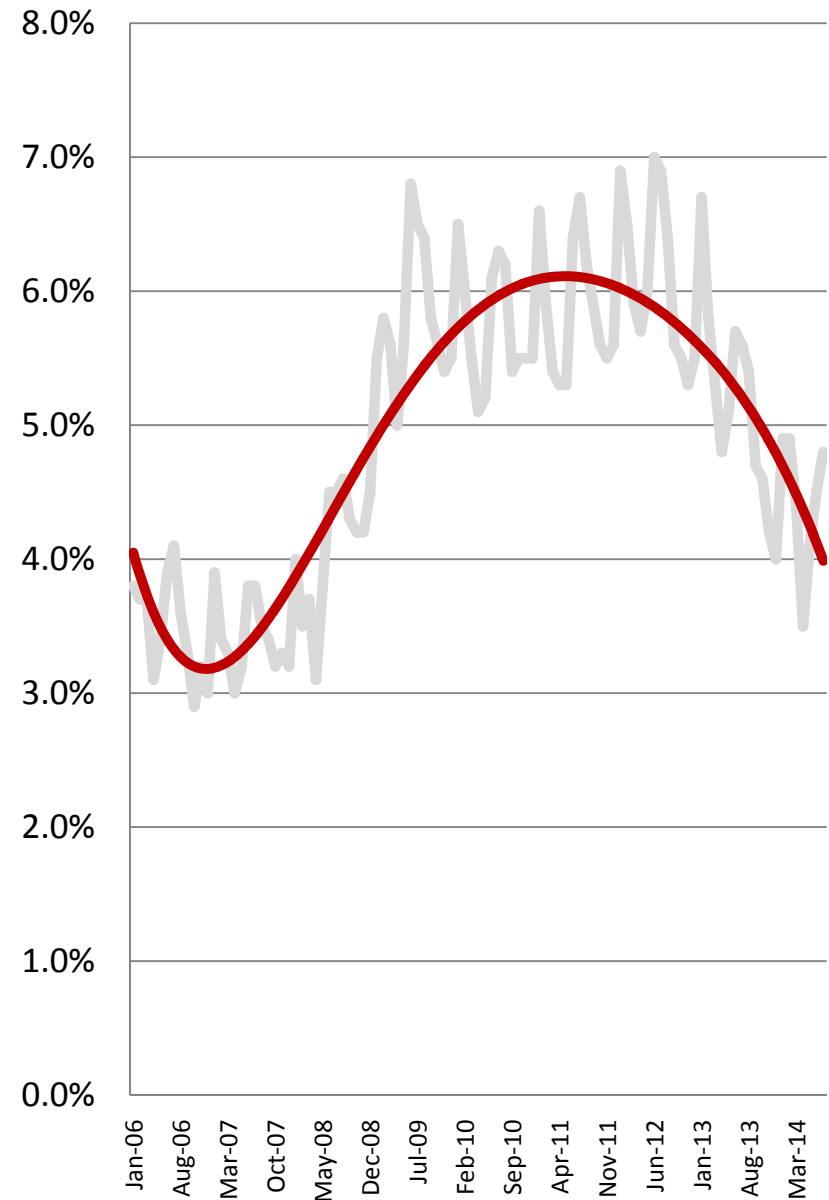
Tompkins County Unemployment, January 2006-July 2014



Economic and Fiscal Influences

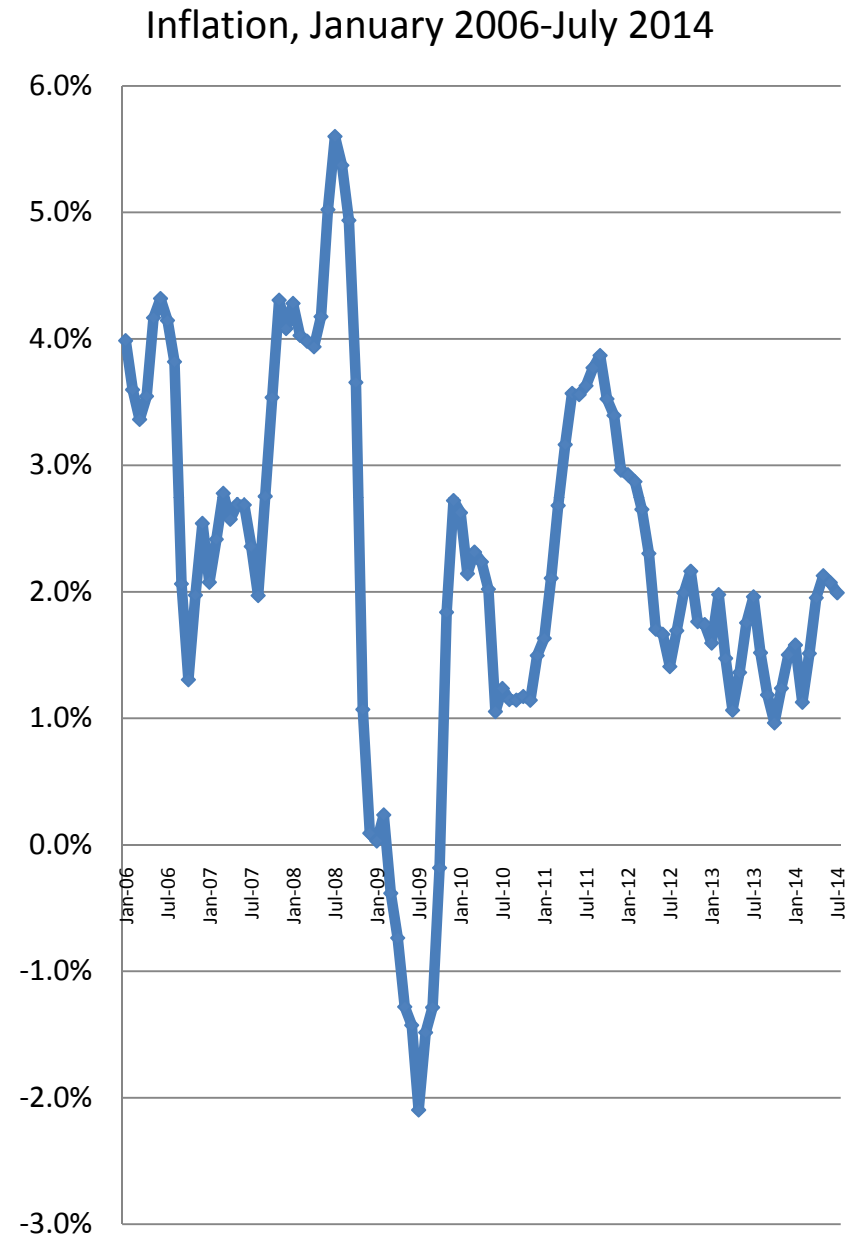
- Positive economic indicators
 - Falling unemployment

Tompkins County Unemployment, January 2006-July 2014



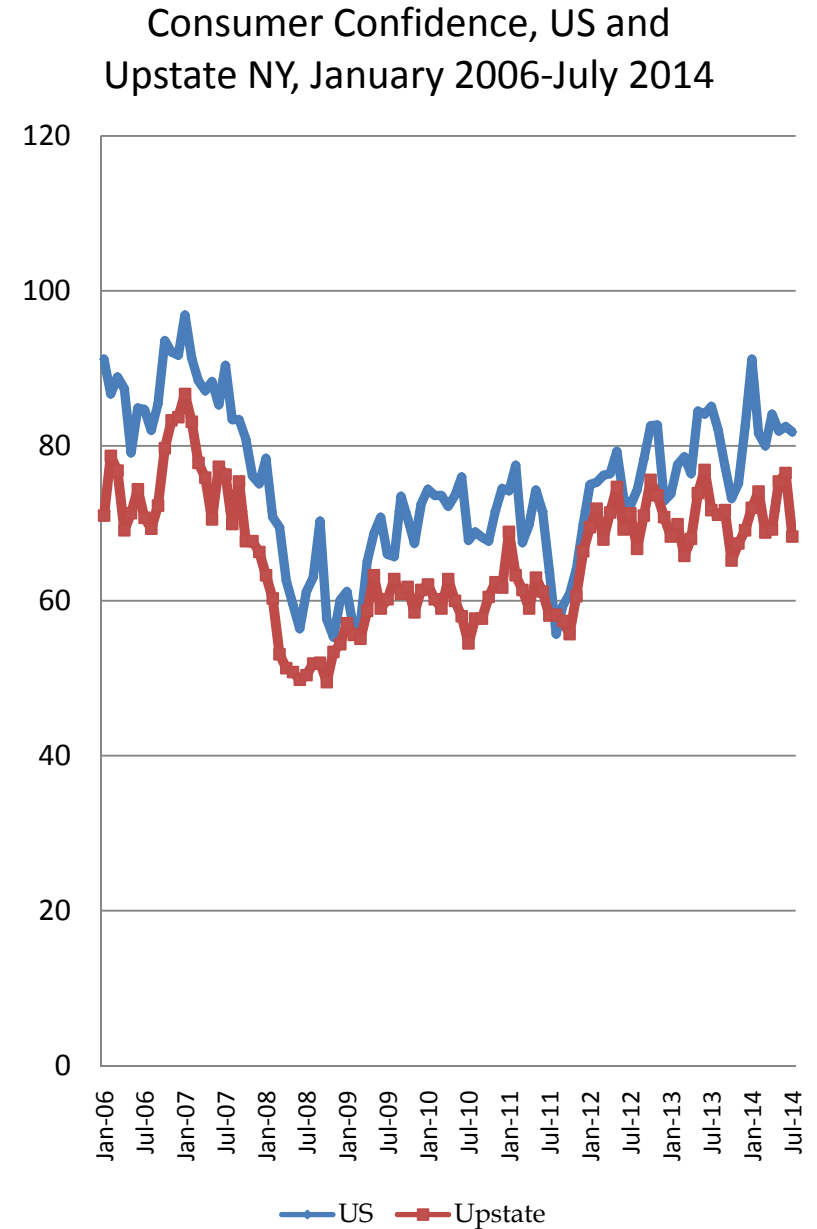
Economic and Fiscal Influences

- Positive economic indicators
 - Low inflation



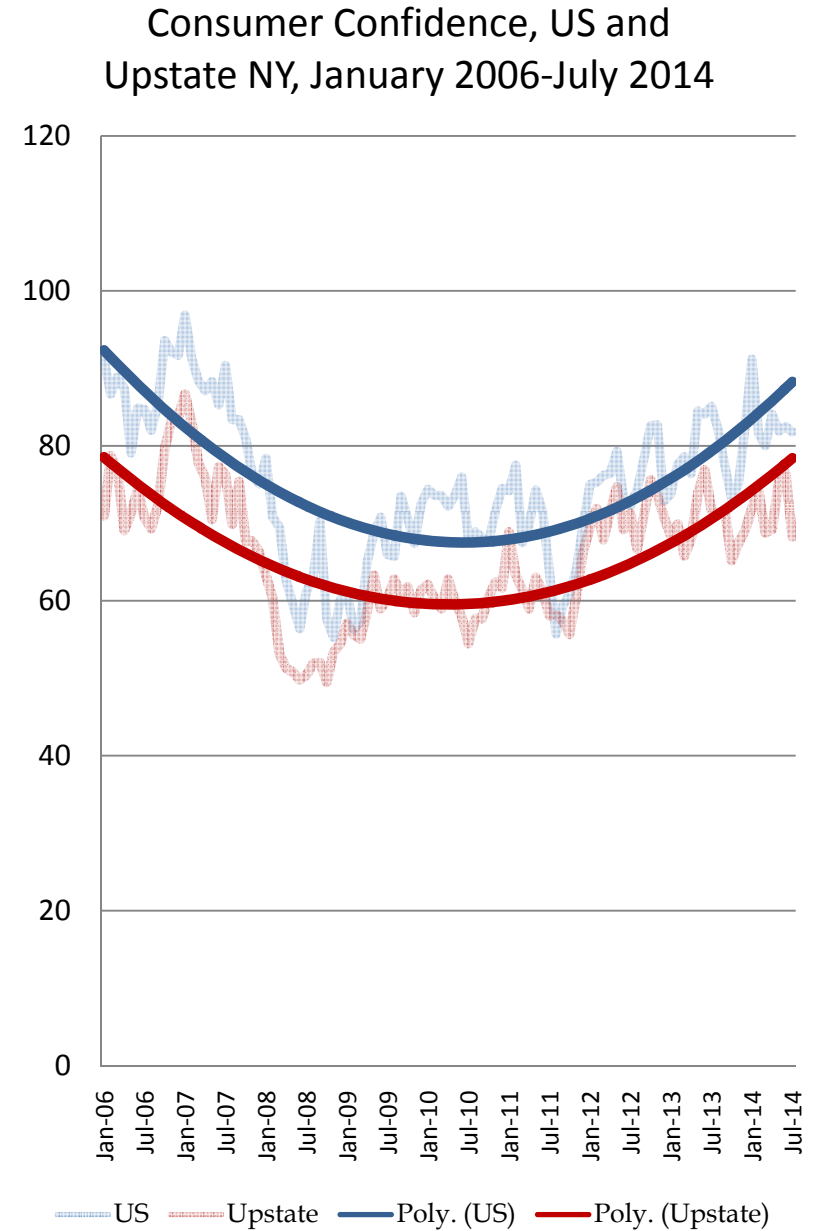
Economic and Fiscal Influences

- Positive economic indicators
 - Generally improving consumer confidence



Economic and Fiscal Influences

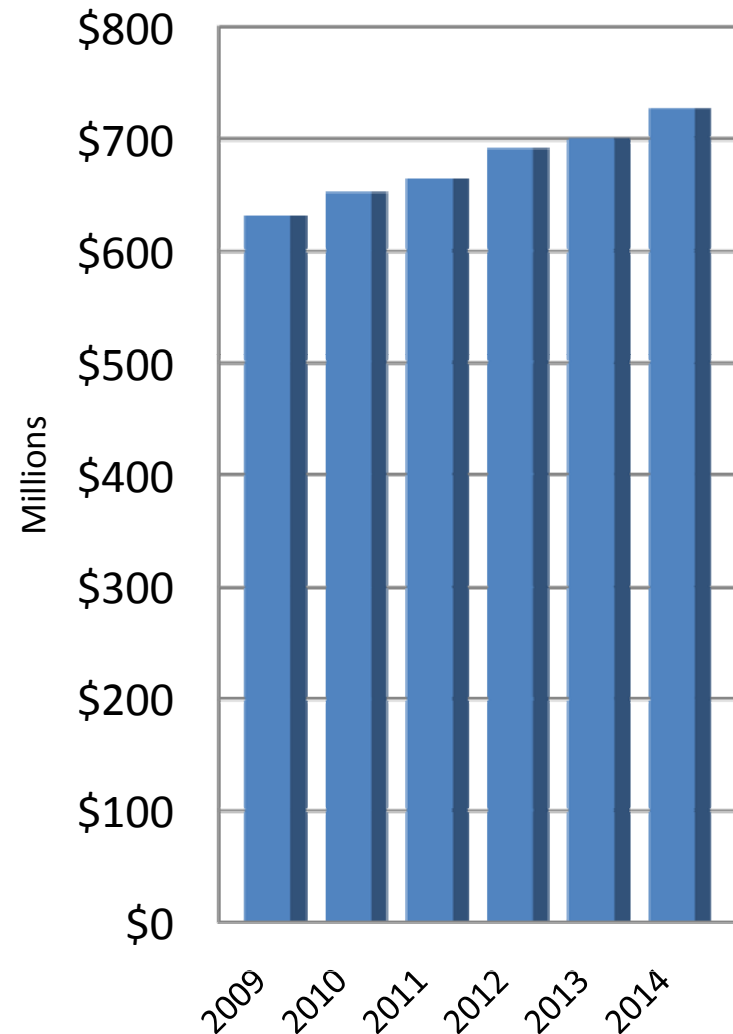
- Positive economic indicators
 - Generally improving consumer confidence



Economic and Fiscal Influences

- Positive economic indicators
 - Moderate growth in consumer spending
 - Up 3.7% first half of 2015

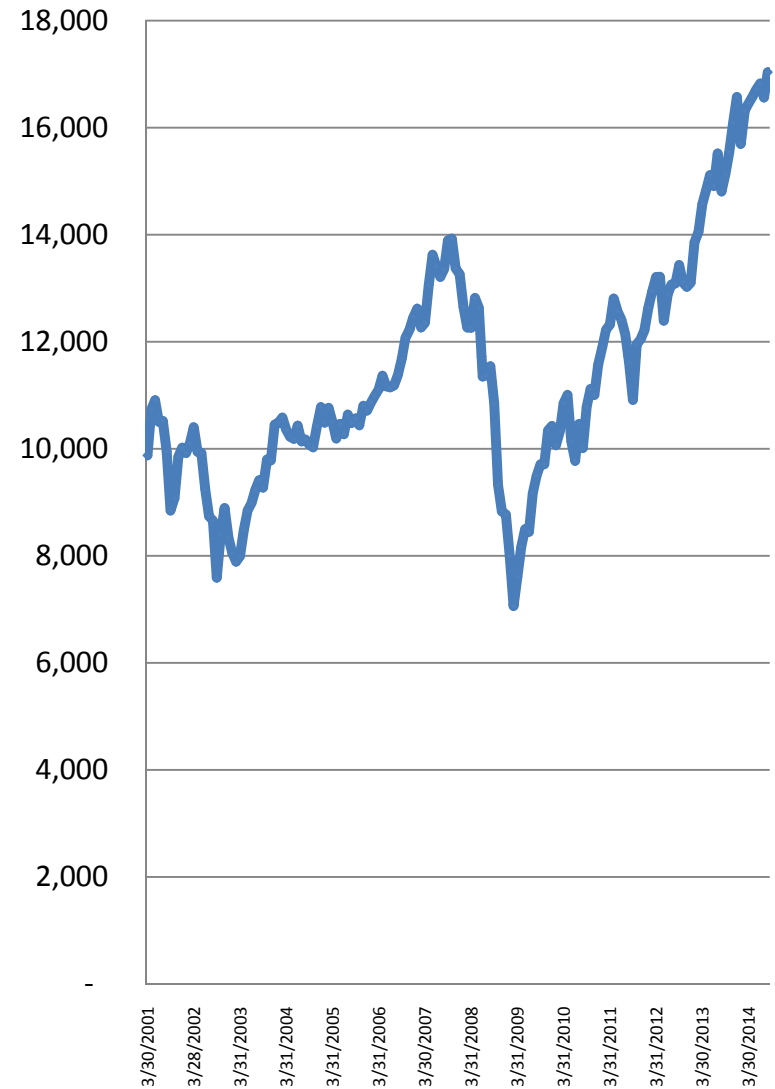
Mid-Year Taxable Sales, 2009-2014 in Tompkins County



Economic and Fiscal Influences

- Positive economic indicators
 - Continued growth in stock market

Monthly Closing Prices, Dow Jones, January 2001-August 2014



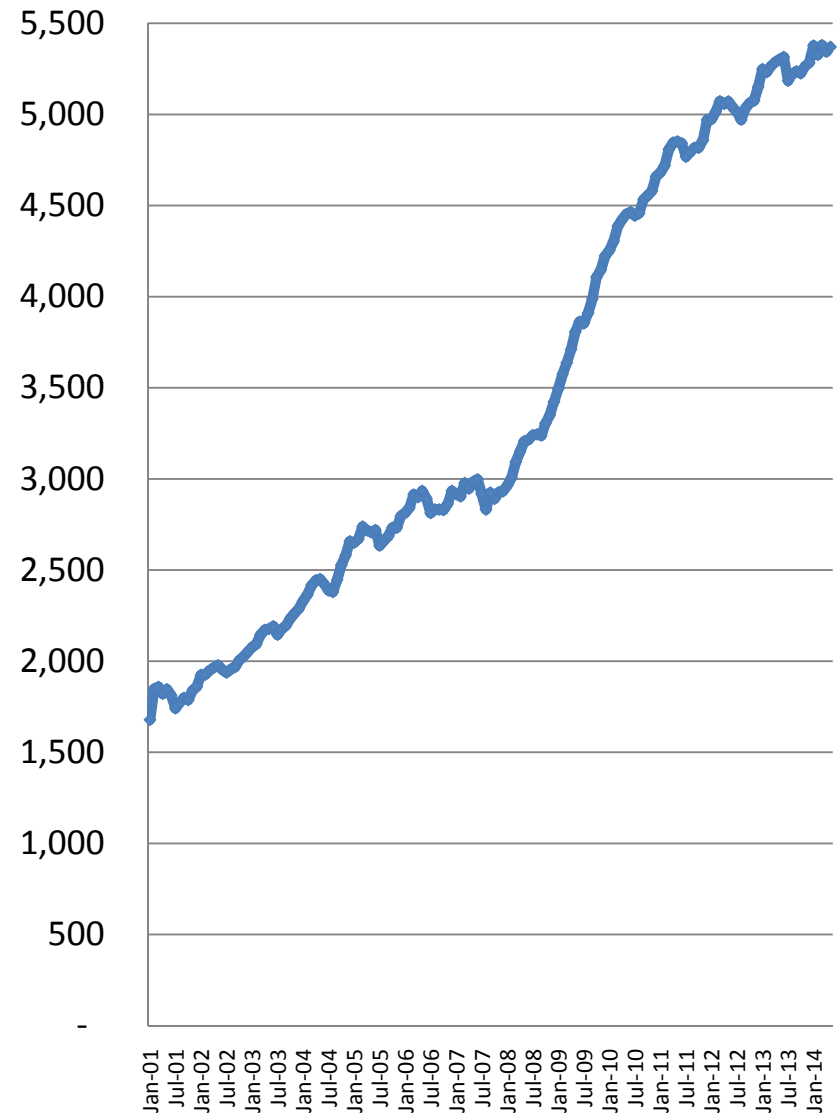
Economic and Fiscal Influences

- Continued indications of underlying need

Economic and Fiscal Influences

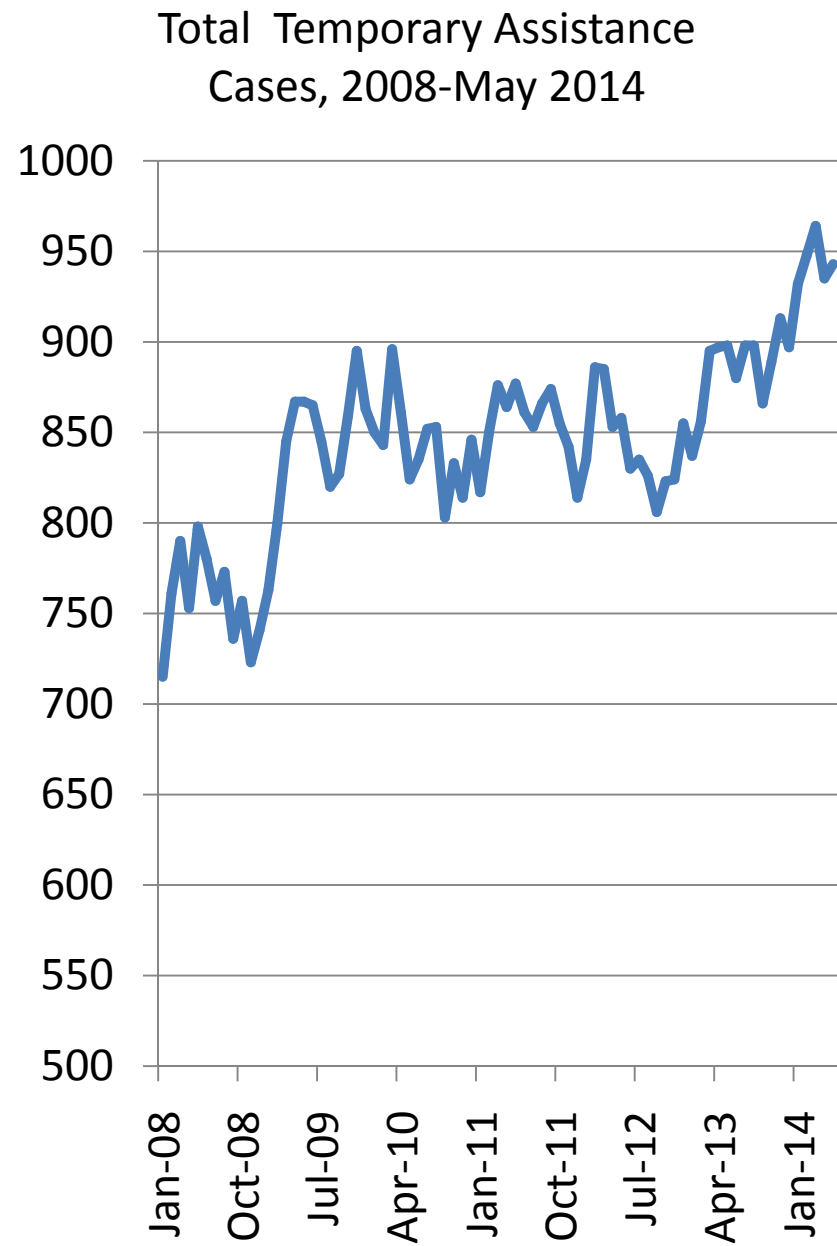
- Continued indications of underlying need
 - SNAP cases still rising
 - Rate of growth slowing

Tompkins County SNAP Cases, 2001-May 2014



Economic and Fiscal Influences

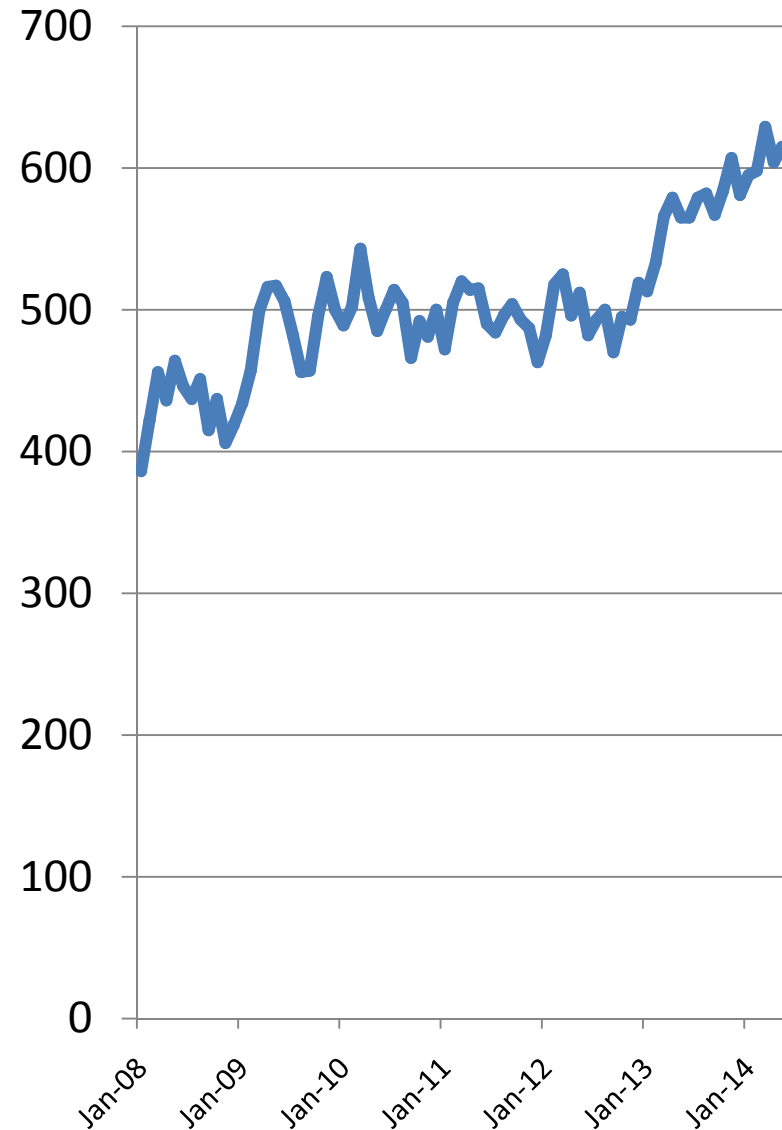
- Continued indications of underlying need
 - Total Temporary Assistance cases up 17% since September 2012
 - Higher now than at depth of recession



Economic and Fiscal Influences

- Continued indications of underlying need
 - Safety Net cases still trending upward
 - 71% local cost share

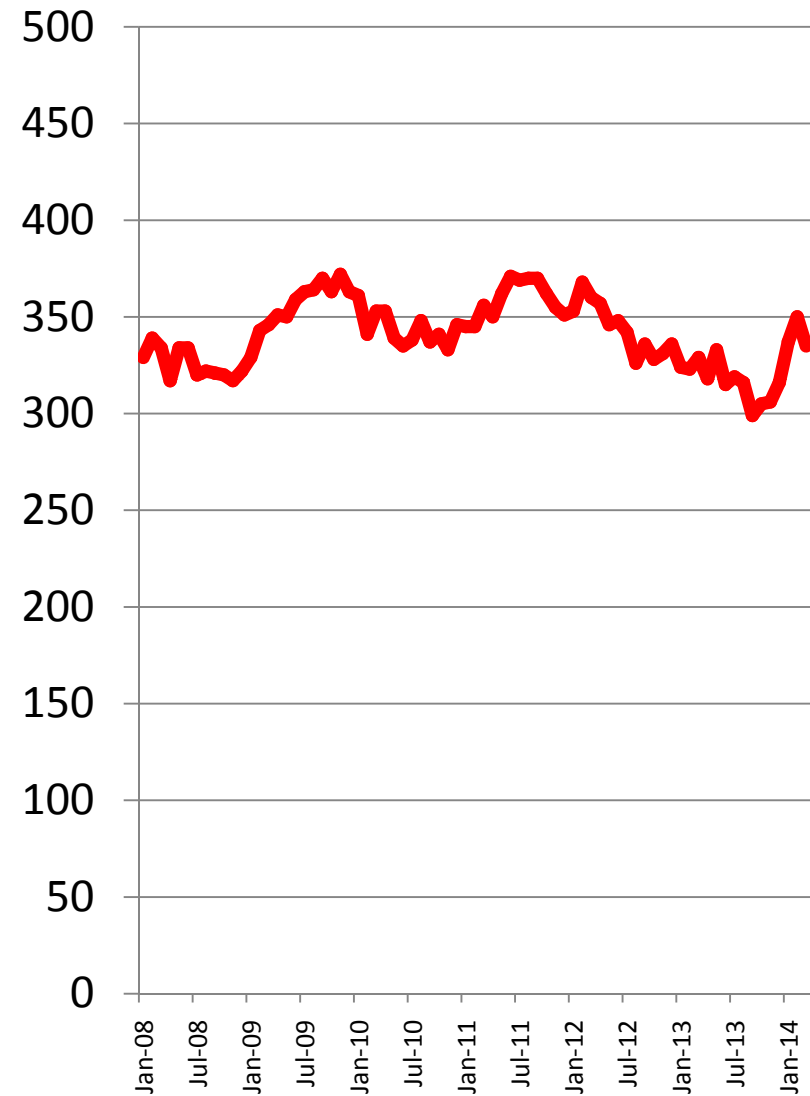
Safety Net Cases, 2008-May 2014



Economic and Fiscal Influences

- Continued indications of underlying need
 - Family Assistance cases rising after years of decline

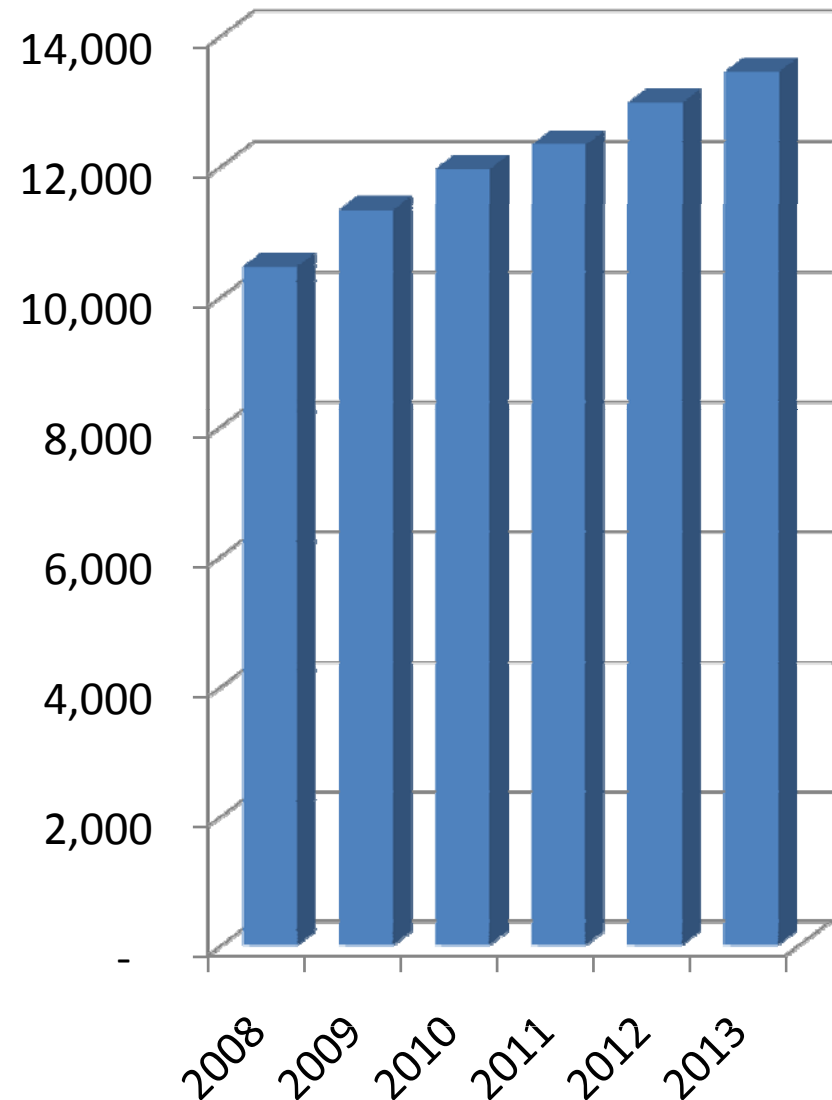
Family Assistance Cases, 2008-
May 2014



Economic and Fiscal Influences

- Continued indications of underlying need
 - Medicaid caseloads rising by 500+ per year

Medicaid Cases, by Year, 2008-2013



2015 Budgetary Goals

Maintain Current Levels of
Service

Reinvest in Facilities and Infrastructure

Stabilize Airport Finances

Address emergent policy goals

Maintain fiscal strength and
stability

Remain within Tax Cap

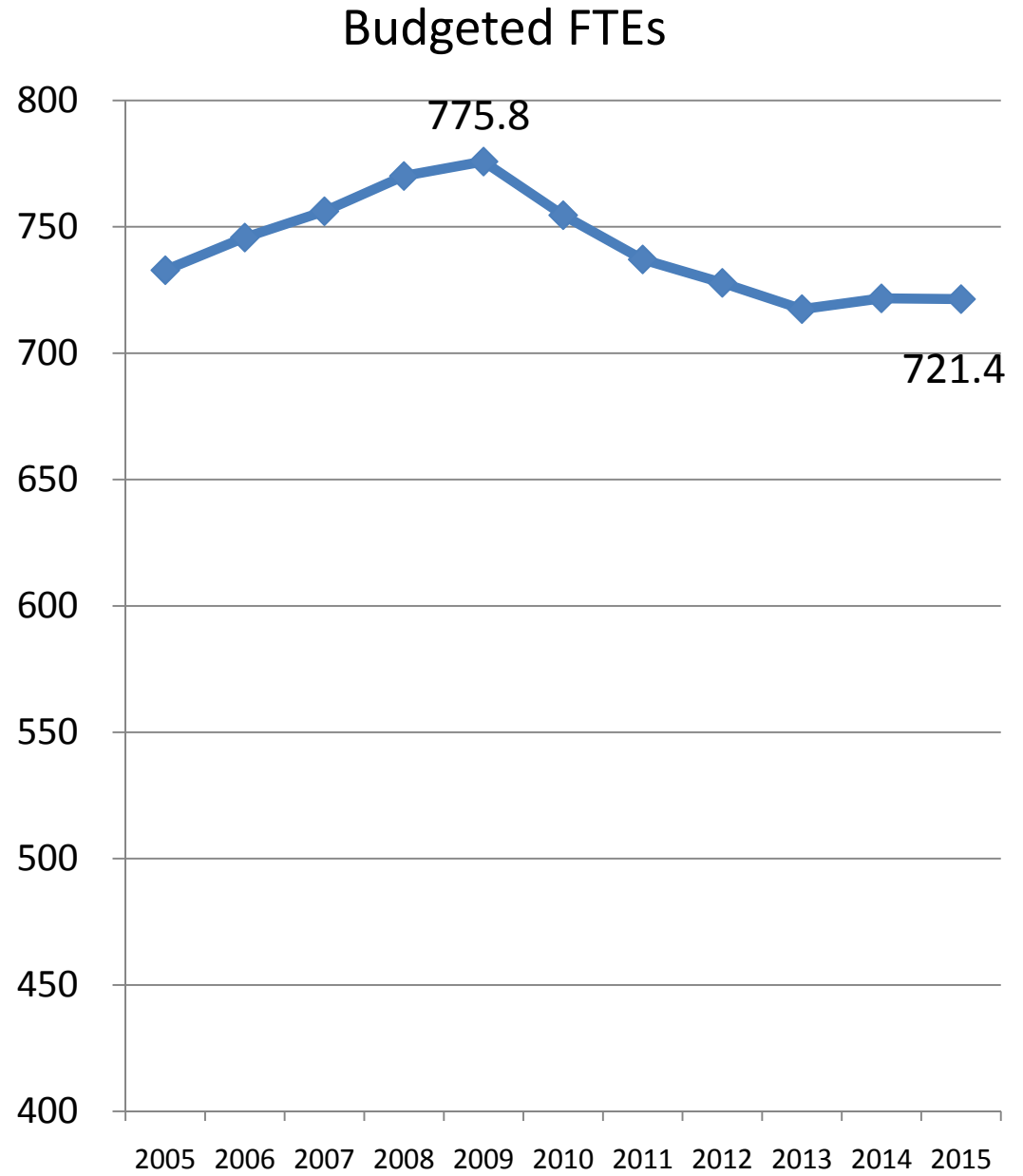
Starting Point:

Major Budget Influences

Wages

- No contracts in place for 2015
 - Most expire 12/2014
- Funds provided for restrained settlements

No Growth
in
Workforce

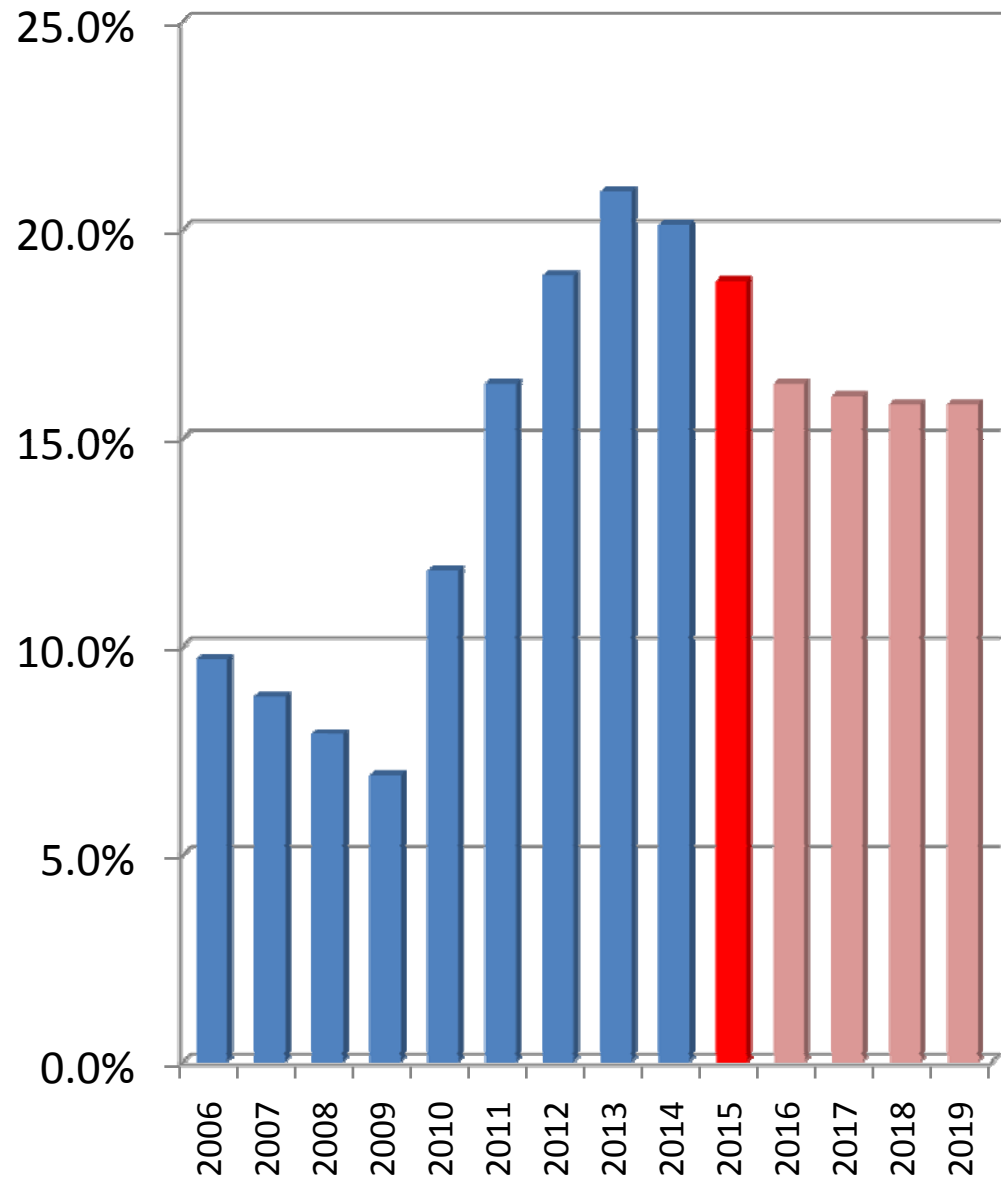


Stable Fringe Benefits

- Pension rates estimated to fall to 18.8% of payroll from 20.1%
- Health premiums up 5%
 - Consortium applying reserves to reduce rates
 - 8% underlying rate of growth
- Total pension and health costs down \$190,000 (local)

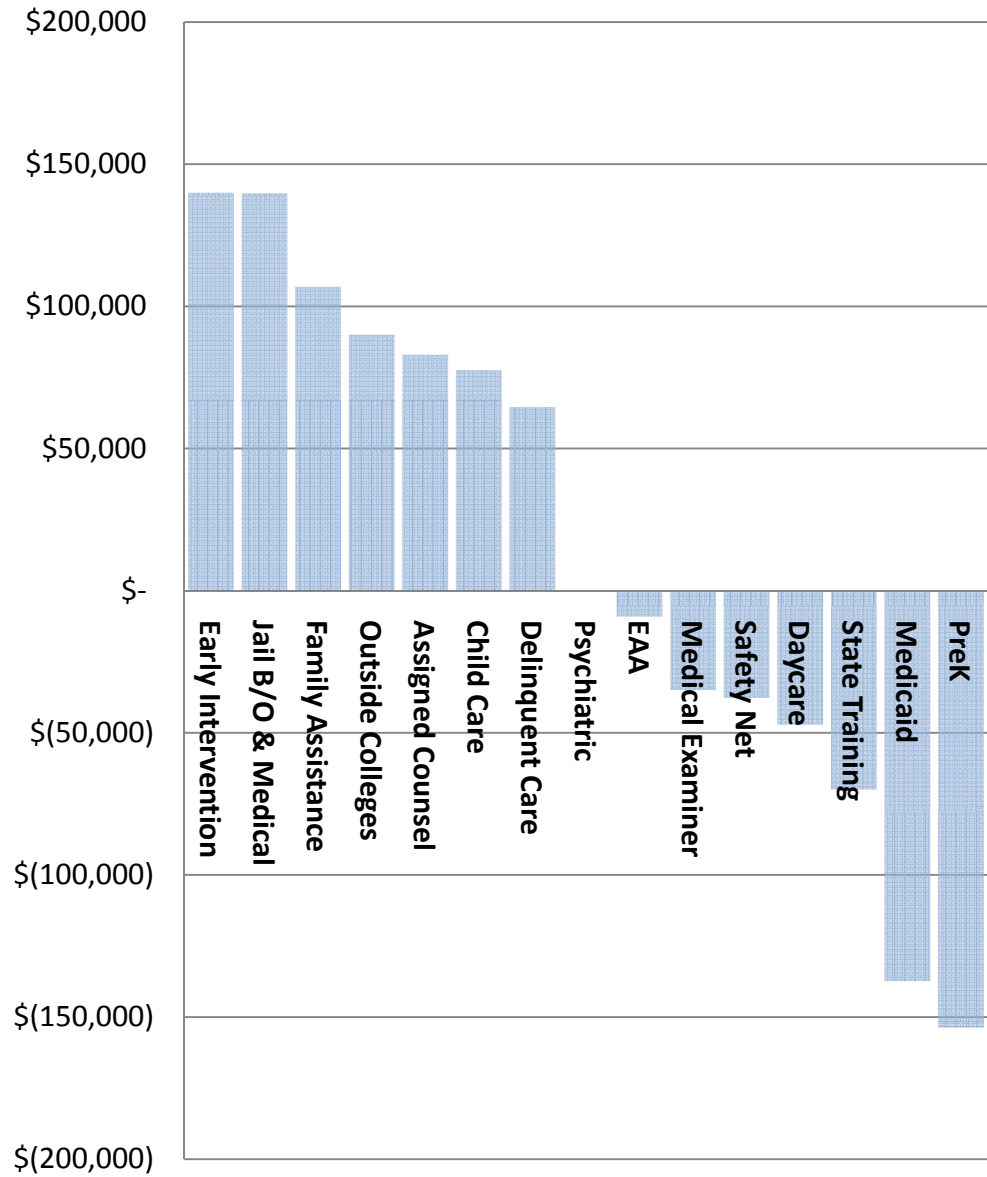
Stable
Fringe
Benefits

Pension Rates as % of Payroll



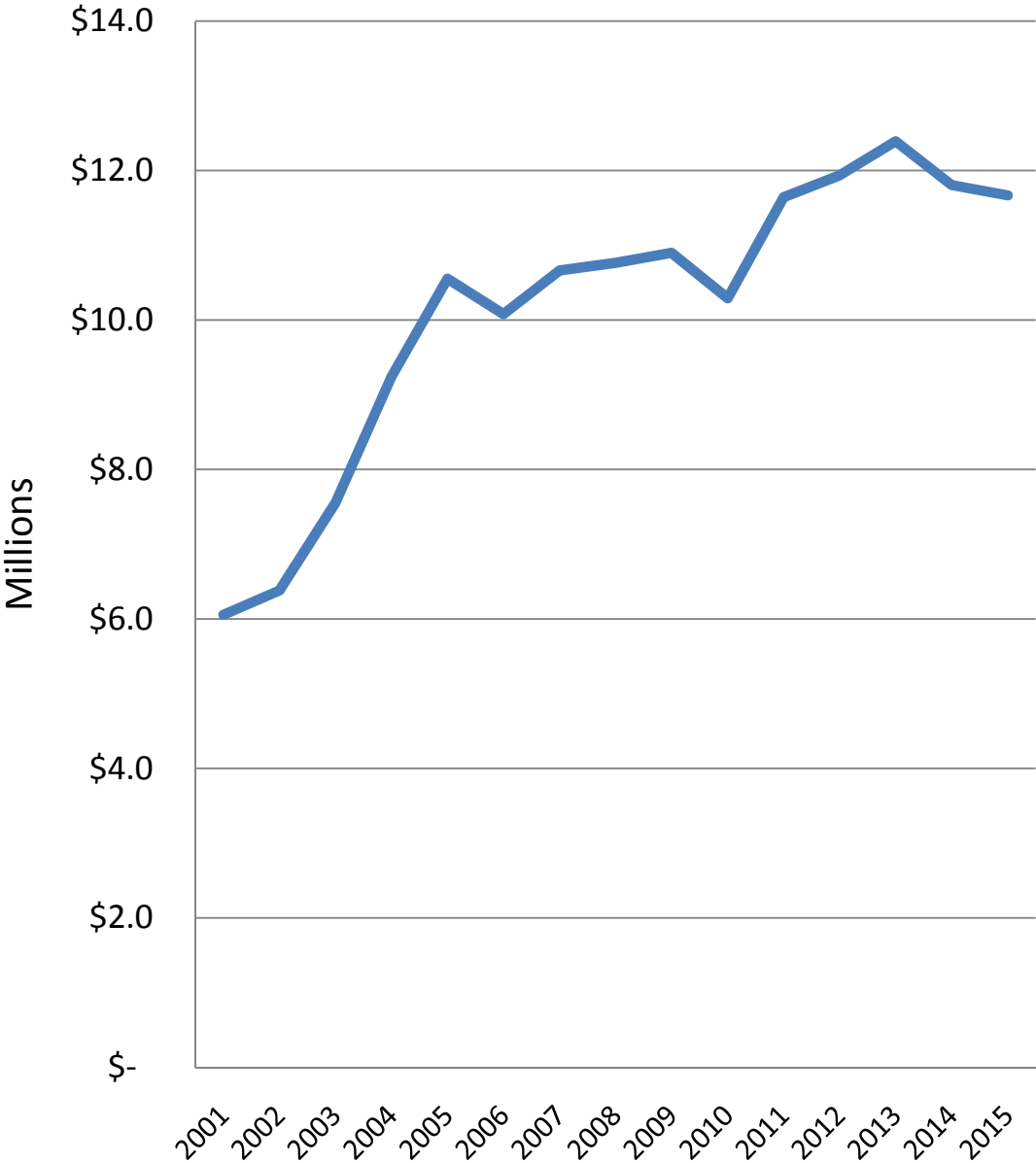
Mandates
Up \$211,000

Change in Local Costs of Mandated Programs



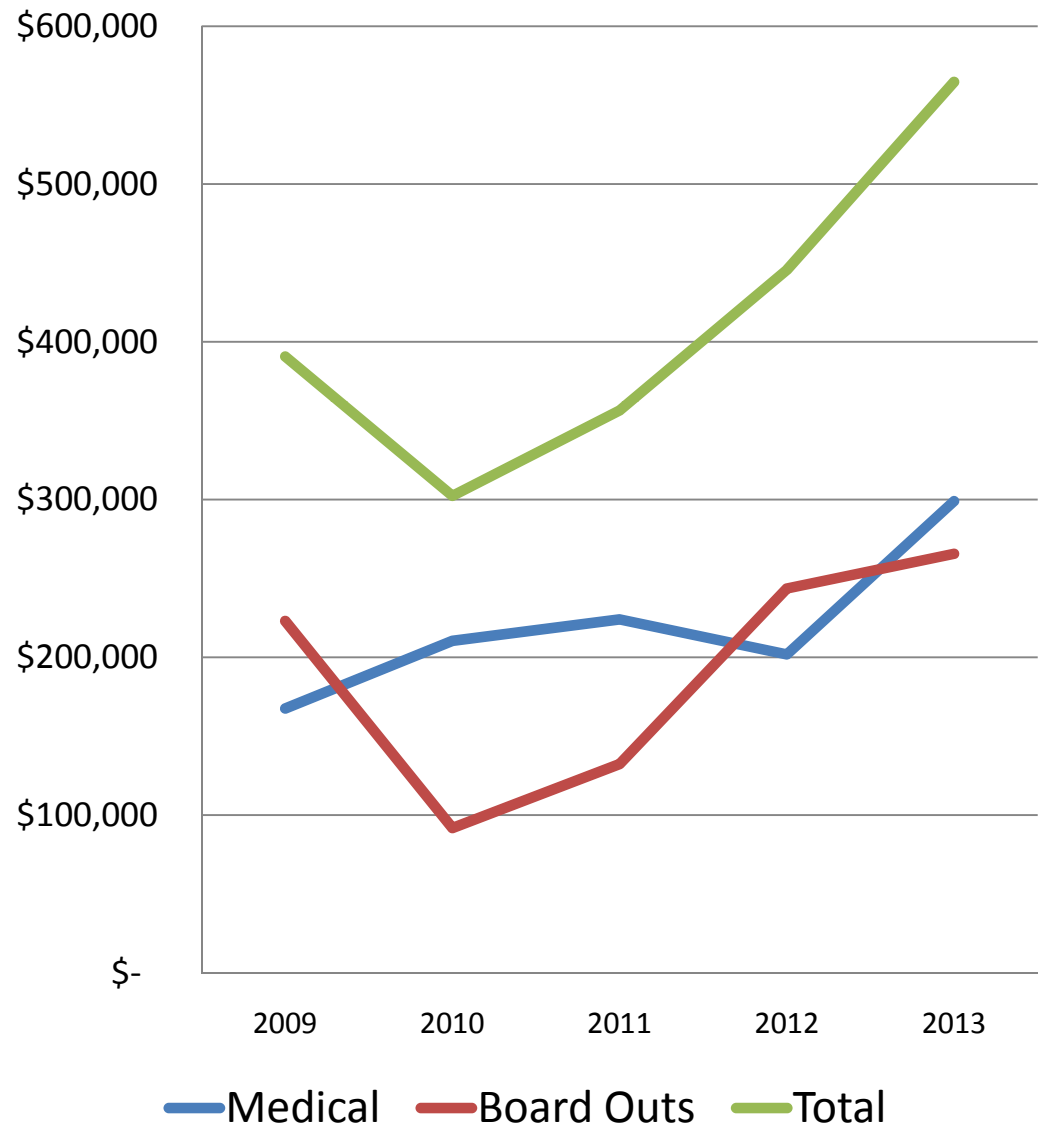
Medicaid Cost History

Medicaid History, 2001-2015 Budget



Jail Medical and Board Out Costs

Jail Medical and Board Out Costs, 2009-2013



Capital Reinvestment

- Levy increase of 0.5% for capital improvements
 - Lower than policy (+0.75%)
- Funding for capital up \$225,344
 - Mainly debt service for projects already authorized

Sales Tax

- Modest growth
- Projected increase of 2.0% in 2014 and 1.5% in 2015
- \$628,000 in added revenue

Town Plowing

- Payments based on prior winter's experience
- Up \$169,000 (to \$600,000) from 2014

Revenue Losses

- Lansing (CPP) Plant PILOT
– \$96,400
- Finger Lakes Library Rent
– \$78,600

Sponsored and Partner Agencies

- TC3
 - 3% increase
 - \$83,659
- Tompkins County Public Library
 - Baseline support now funded with recurring revenue, per 2013 plan
 - \$140,000 shift from County reserves to target
- TCAD
 - \$96,000 local dollar increase per 2013 Agreement
 - Will decline in following 3 years as Room Tax support increases

Directed Spending Cuts

- 1% (\$400,000) across-the-board reduction in local dollar spending
- Applied to all non-mandated or fixed costs

Outcomes

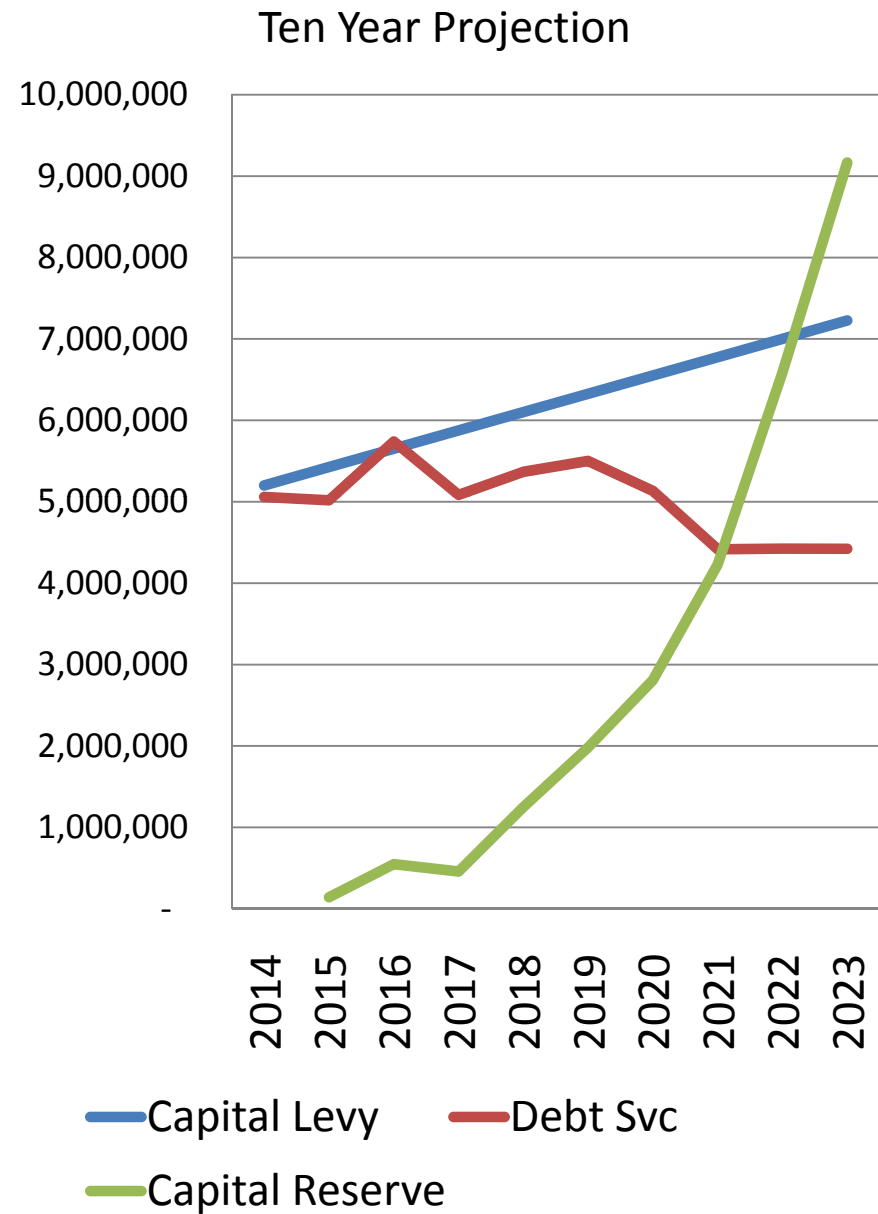
**Goal:
Maintain
Services**

No reduction in service

Goal:
Maintain
Capital
Investment

- Fully funds projects in Updated CIP
- Adds 0.5% (\$225,000) to tax levy

Projected Capital Levy, Capital Costs, & Capital Reserve



Goal:
Stabilize
Airport
Finances

- Proposes a 3-year suspension of County administrative charges
- Saves airport \$126,000/year
- Mitigates factors affecting competitive position
- Funded by application of County reserves

Goal:
Address
emergent
policy goals

- Jail Alternatives Task Force near-term recommendations funded
- Additional contracts covered by living wage

Goal: Fiscal Stability

- Use of Reserves at \$0.6 mil
 - Down from \$0.7 million in 2014 and \$3.5 million in 2009
- Reserves used only for non-recurring expenses

Other Noteworthy Features

- Solid Waste annual fee reduced to \$52 from \$56
- 1.5 positions added to Facilities—within target
- DSS able to reduce roster by 3 FTEs
- Through OTRs, several agencies received increases beyond the 1% target

Goal:
Stay within
Tax Cap

- Recommended levy up
2.34%
- Cap now projected at
2.65%

Structuring the Budget within Fiscal Parameters

Financial Summary

Original Fiscal Target

- 2.36% tax levy increase
- \$1.06 million in added levy authority

Recommended Levy Growth

2.34%

Recommended Levy Growth

\$1.06 million

Over Target Requests

	<u>Gross</u>	<u>Reserves</u>	<u>Levy</u>
Requested	\$1.15 mil.	\$0.59 mil.	\$0.54 mil.

Over Target Requests

	<u>Gross</u>	<u>Reserves</u>	<u>Levy</u>
Requested	\$1.15 mil.	\$0.59 mil.	\$0.54 mil.
Recommended	\$0.82 mil.	\$0.60 mil.	\$0.21 mil.

Over Target Requests

	<u>Gross</u>	<u>Reserves</u>	<u>Levy</u>
Requested	\$1.15 mil.	\$0.59 mil.	\$0.54 mil.
Recommended	<u>\$0.82 mil.</u>	<u>\$0.60 mil.</u>	<u>\$0.21 mil.</u>
Difference	-\$0.33 mil.	+\$0.01 mil.	-\$0.33 mil.

Total Budget

(millions)

2015	\$180.1
2014	<u>\$170.2</u>
\$ Change	\$ 9.8
Adjustment	<u>\$ (7.0)</u>
Net Change	\$ 2.8
% Change	1.6%

Adjusts for budget-neutral new method of accounting for issuance and retirement of BANs
Excludes pass-through of sales tax dollars to other municipalities

Local Budget

(millions)

2015	\$83.3
2014	<u>\$81.7</u>
\$ Change	\$ 1.6
% Change	2.0%

Tax Levy

(millions)

2015	\$46.12
2014	<u>\$45.07</u>
\$ Change	\$ 1.06
% Change	2.34%

Tax Rate
per \$1,000

2015	\$6.84
2014	<u>\$6.89</u>
\$ Change	(\$0.05)
% Change	(0.7%)

Average Tax Bill

(\$165,000 home)

2015	\$1,129
2014	<u>\$1,122</u>
\$ Change	\$ 6.34
% Change	0.6%

**Cost to Average
Homeowner**
(\$165,000 home)

Property Tax	\$6.34
Solid Waste Fee	<u>(\$4.00)</u>
Net impact	\$2.34

Budget Document Format

Budget Document Format

<u>Section</u>	<u>Subject</u>
Section 1	Community and organizational overview
Section 2	Fiscal overview and summaries
Section 3	Capital Plan
Section 4	Department budgets, OTRs, and programs
Section 5	Agency budgets, OTRs, and programs
Appendix A	Chart of Accounts and Fee Schedules
Appendix B	Contracts
Appendix C	Memberships

The 2015 Tentative Budget

Tompkins County, New York

www.tompkinscountyny.gov/ctyadmin