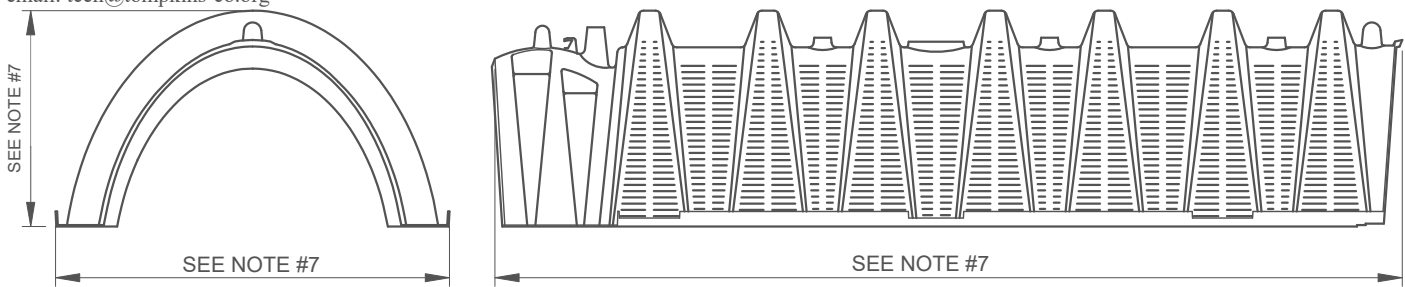


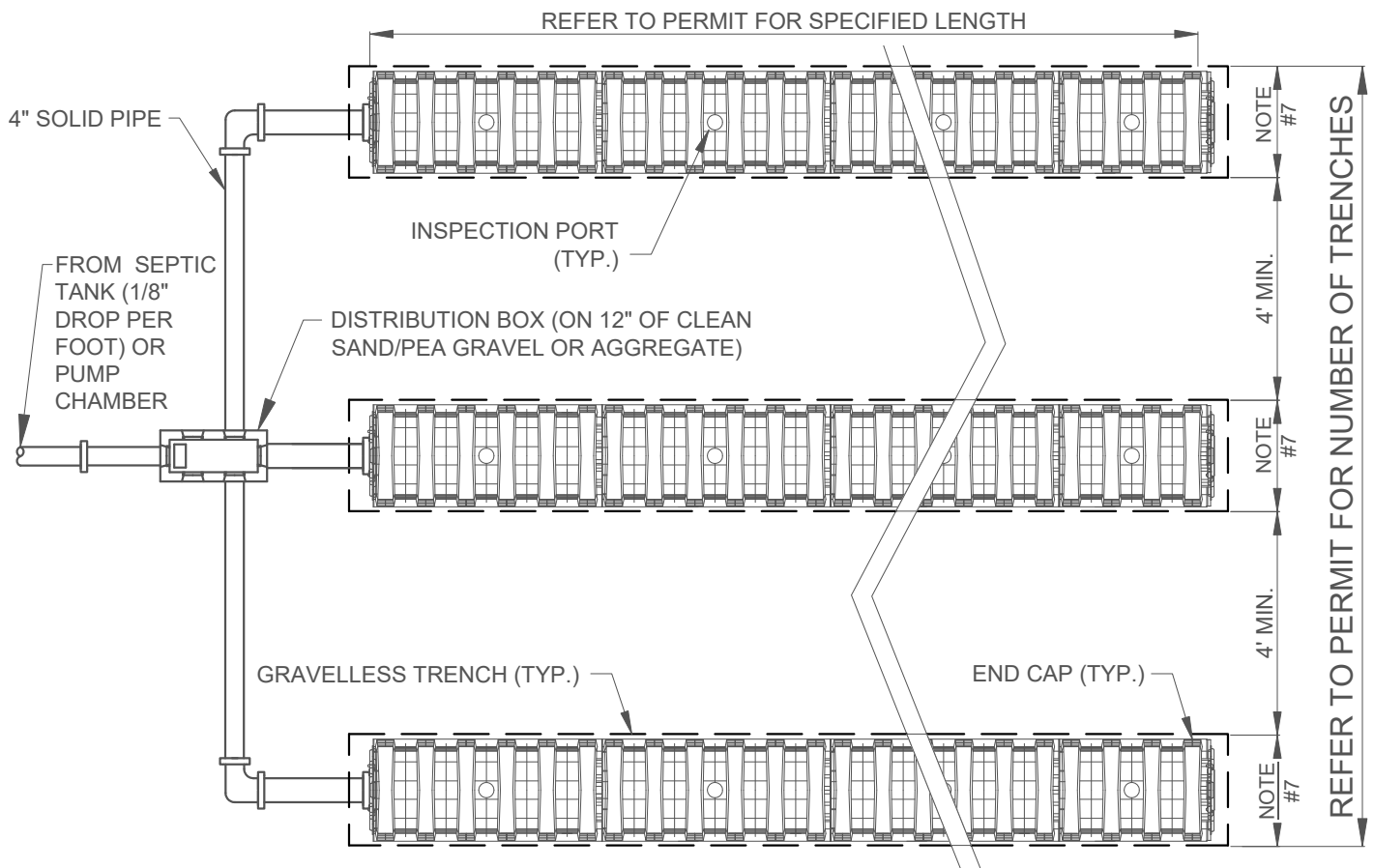
Details and Specifications #10 Gravelless Trenches

ENVIRONMENTAL HEALTH DIVISION
www.tompkinscountyny.gov/health/eh
email: tceh@tompkins-co.org

Ph: (607) 274-6688
Fx: (607) 274-6695



SECTION/SIDE VIEWS - NOT TO SCALE



TOP VIEW - NOT TO SCALE

ADDITIONAL SPECIFICATIONS:

1. REFER TO SEPARATION DISTANCES TABLE FOR MORE INFORMATION ON VERTICAL SEPARATION DISTANCES TO BEDROCK.
2. DO NOT INSTALL TRENCHES IN SATURATED SOIL.
3. INSTALL TRENCHES PARALLEL TO CONTOURS.
4. INSTALL TRENCHES AS SHALLOW AS POSSIBLE. COVER WITH A MINIMUM OF 6" TOPSOIL.
5. RAKE SIDES AND BOTTOM OF TRENCHES PRIOR TO PLACING GRAVELLESS PRODUCT.
6. ENDS OF ALL GRAVELLESS TRENCHES MUST BE CAPPED.
7. GRAVELLESS ABSORPTION SYSTEM PRODUCTS SHALL BE INSTALLED IN CONFORMANCE WITH MANUFACTURER'S INSTRUCTIONS. ALL GRAVELLESS TRENCHES SHALL BE OF EQUAL LENGTH. REFER TO APPROVED GRAVELLES PRODUCTS LIST (PAGE 2). CONTACT THE TOMPKINS COUNTY HEALTH DEPT. WITH QUESTIONS ON ON INSTALLATION OR APPROVED PRODUCTS.



Details and Specifications #10 Gravelless Trenches

ACCEPTABLE GRAVELLESS and ALTERNATE AGGREGATE PRODUCTS

This list is based upon review of product specifications and compared to criteria established in Appendix 75-A, effective February 3, 2010.

Manufacturer	Product	Trench Length Design (75-A Tables 4A or B) ¹
Advanced Drainage Systems (ADS) www.ads-pipe.com 800-821-6710	GEO-Flow Pipe Leaching System GEO-Flow geotextile sand filter system	25% 6.0 ft ² /ft rating
ICC Technologies (also distributed by ADS) www.iccflowtech.com 877-422-3569 or 877-ICC-Flow	Flowtech: FTS 122H-1 Flowtech: FTS 123T-1 Flowtech: FTS 103T-1	1:1 25% ² 25% ²
Cultec www.cultec.com 800-4-CULTEC	Contractor EZ-24 Chamber Contractor 100 Chamber Contractor 125 Chamber	1:1 25% 25%
Eljen Corporation www.eljen.com 800-444-1359	Geotextile Sand Filter (Type B)	6.0 ft ² /ft rating
Infiltrator Systems www.infiltratorsystems.com 800-221-4436	Equalizer 24 Quick4 Equalizer 24 Quick4 Equalizer 24 HD Quick4 Equalizer 24 LP Quick4 Equalizer 36 Quick4 Plus Equalizer 36 LP Quick 4 Standard Quick 4 Plus Standard Quick 4 Plus Standard LP High Capacity H-20 EZ Flow 1202H EZ Flow 1203T EZ Flow 1003T BioDiffuser 15" Narrow (Bio 2) BioDiffuser 22" Narrow (Bio 3) ARC 18 Chamber ARC 24 Chamber ARC 36 Chamber ARC 36 HC Chamber ARC 36 HC H-20 Chamber BioDiffuser 11" Standard (34" wide) BioDiffuser 16" High Capacity H-20	1:1 1:1 1:1 1:1 25% 25% 25% 25% 25% 25% 1:1 25% ² 25% ² 1:1 25% 1:1 25% 25% 25% 25% 25% 25% 25%
Presby Environmental www.presbyeco.com 603-823-5298	Enviro-Septic System AES geotextile sand filter system	25% 6.0 ft ² /ft rating
Modern Landfill www.moderncorporation.com 800-662-0012	Tire Derived Aggregate (TDA) ³	1:1
Casing, Inc. jim.fabrizio@casingsinc.com 518-943-9404	Tire Derived Aggregate (TDA) ³	1:1
BCD Tire Chip Manufacturing 518-212-6969	Tire Derived Aggregate (TDA) ³	1:1

¹ 25% is a reduction in total linear feet. Product meets criteria established in Section 75-A.8(c).

² Will require the issuance of a Specific Waiver or plan approval from the local health department. Increased infiltration

³ Product meets criteria established in Section 75-A.8(b)(3)(v)

Note: The above list is not an endorsement of any of the products by the NYS Department of Health. This list will be updated as product specifications are reviewed in accordance with criteria established in Appendix 75-A.