

David Cappaert, Michigan State University, bugwood.org

# The Emerald Ash Borer In New York State

Mark Whitmore, Department of Natural Resources, Cornell University. [mcw42@cornell.edu](mailto:mcw42@cornell.edu)



Cornell University  
Cooperative Extension

Preparing for the Emerald Ash Borer  
<http://nyis.info>

# The EAB in North America

- **2002 First detected near Detroit, MI**
- **First established in mid 1990's**
- **Hitchhiked in wood packing material**
- **Has spread to 15 states and 2 Provinces**
- **Movement by:**
  - **Firewood**
  - **Nursery stock**





# EAB Life cycle



David Cappaert, Michigan State University, forestryimages.org

**Adults lay eggs in mid to late June**

**Eggs laid on bark surface, cracks**

**Creamy white turning to amber**

**Hatch in 7 to 10 days**

**Larva – four instars**

**301 to 315 days**



David Cappaert, Michigan State University, Bugwood.org



# EAB Life cycle



David Cappaert, Michigan State University, bugwood.org

## Larvae



David Cappaert, Michigan State University, bugwood.org



## Larval galleries under bark





# EAB Life cycle



by Petrice, USDA Forest Service, Bugwood.org

## Late instar larva



## Pre pupa

David Cappaert, Michigan State University, bugwood.org



David Cappaert, Michigan State University, bugwood.org

## Pupa



Cornell University  
Cooperative Extension

Preparing for the Emerald Ash Borer  
<http://nyis.info>

# EAB Life cycle



Daniel Herms, The Ohio State University, Bugwood.org



David Cappaert, Michigan State University, bugwood.org

## Emergence holes



Toby Petrice, USDA Forest Service, Bugwood.org





# EAB Life cycle



David Cappaert, Michigan State University, bugwood.org



David Cappaert, Michigan State University, bugwood.org



Daniel Herms, The Ohio State University, Bugwood.org

**Adult – female lives 21 to 25 days**

**2-3 week maturation feeding on leaves**

**Female lays 60 to 90 eggs**







# Alien Forest Pest Explorer

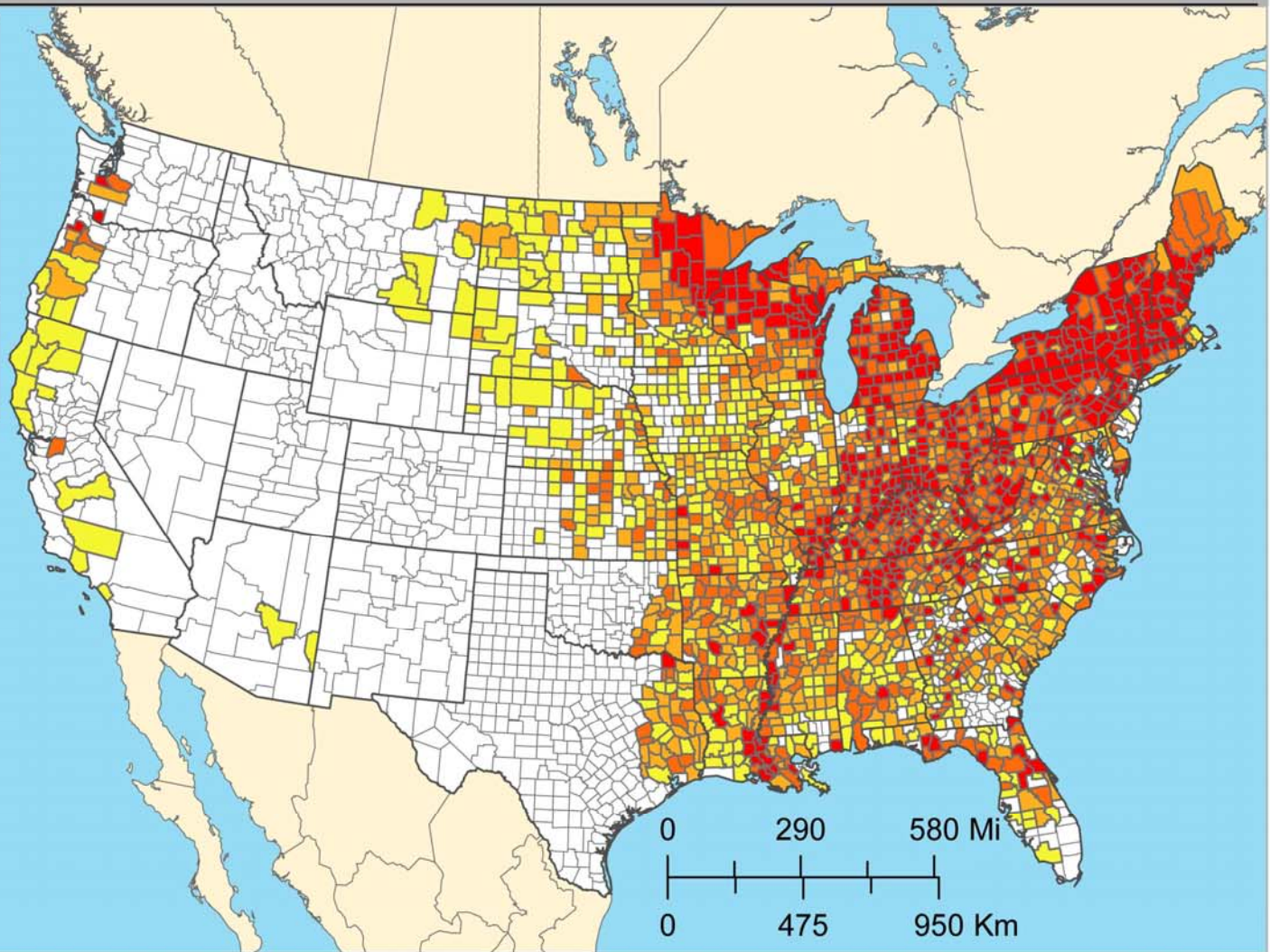
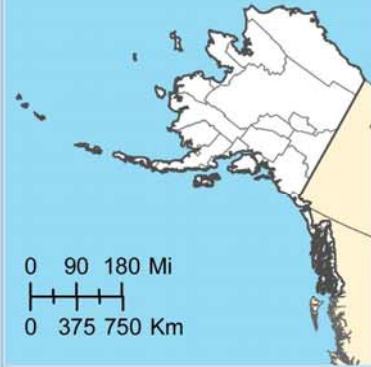
# Host Tree Volume Map

## Emerald Ash Borer

*Agrilus planipennis*

[www.fs.fed.us/ne/morgantown/4557/AFPE/](http://www.fs.fed.us/ne/morgantown/4557/AFPE/)

### Alaska

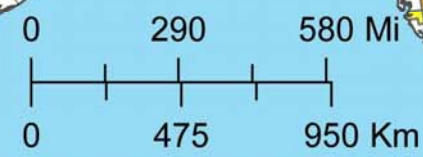


### Host Volume (m<sup>3</sup>/ha)

- 0
- 0.22 - 44.28
- 44.28 - 127.2
- 127.2 - 283.13
- 283.13 - 2374.76



Map created on 6/9/2009



USDA  
Forest  
Service



Northern  
Research  
Station



Eastern Forest  
Environmental Threat  
Assessment Center



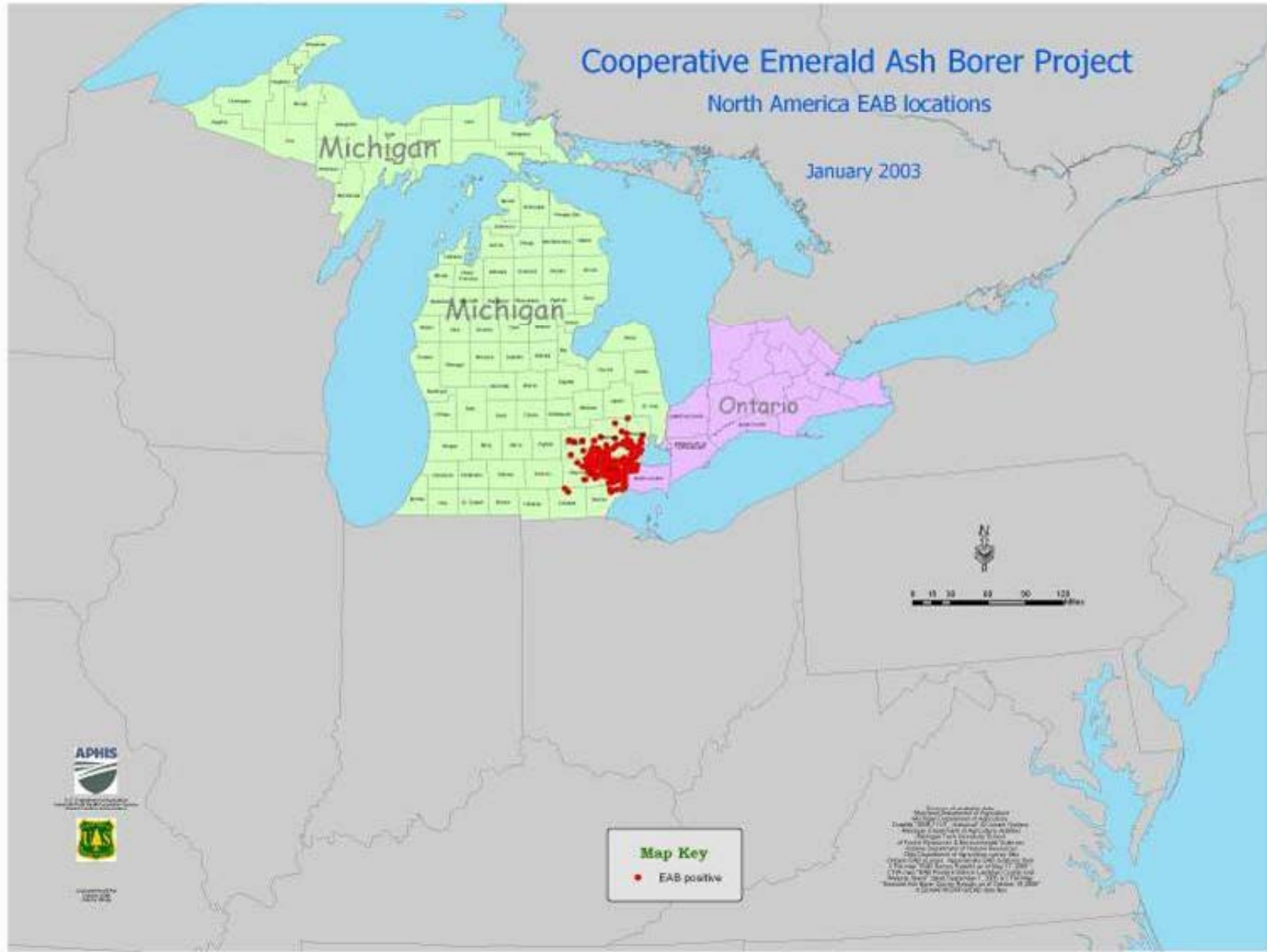
Forest Health  
Technology  
Enterprise Team



RSAC Remote Sensing  
Applications  
Center



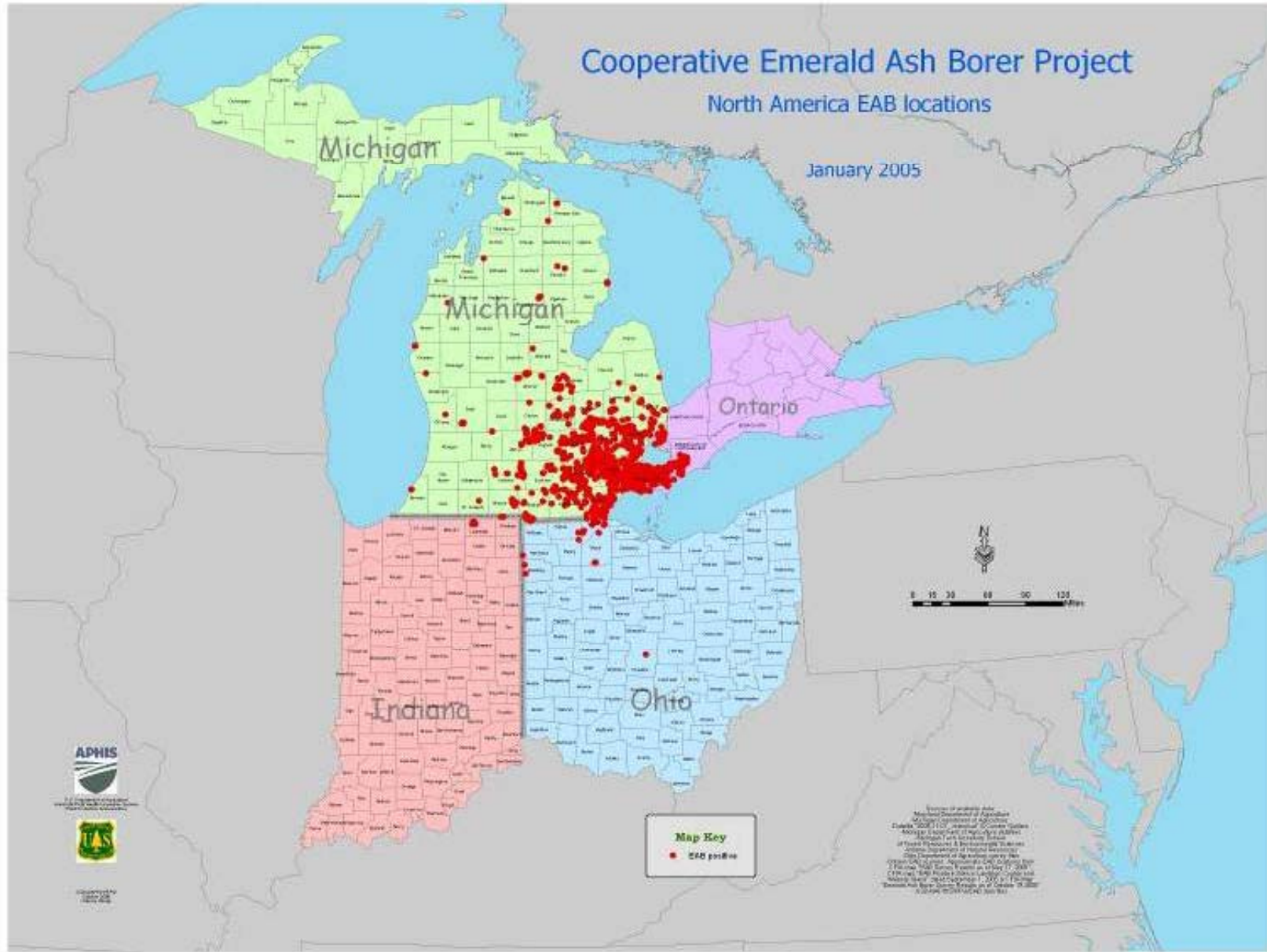
# January 2003



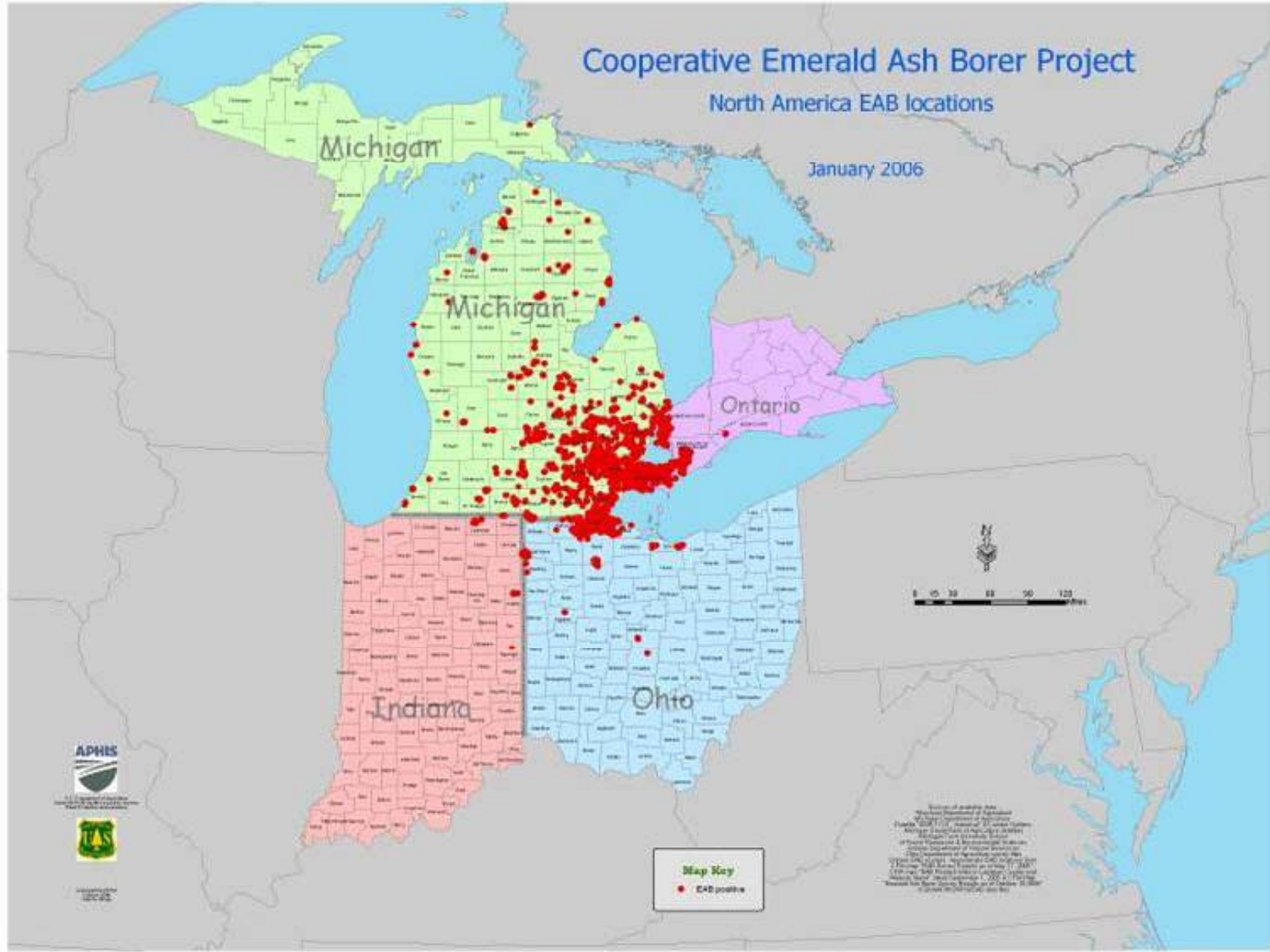




# January 2005

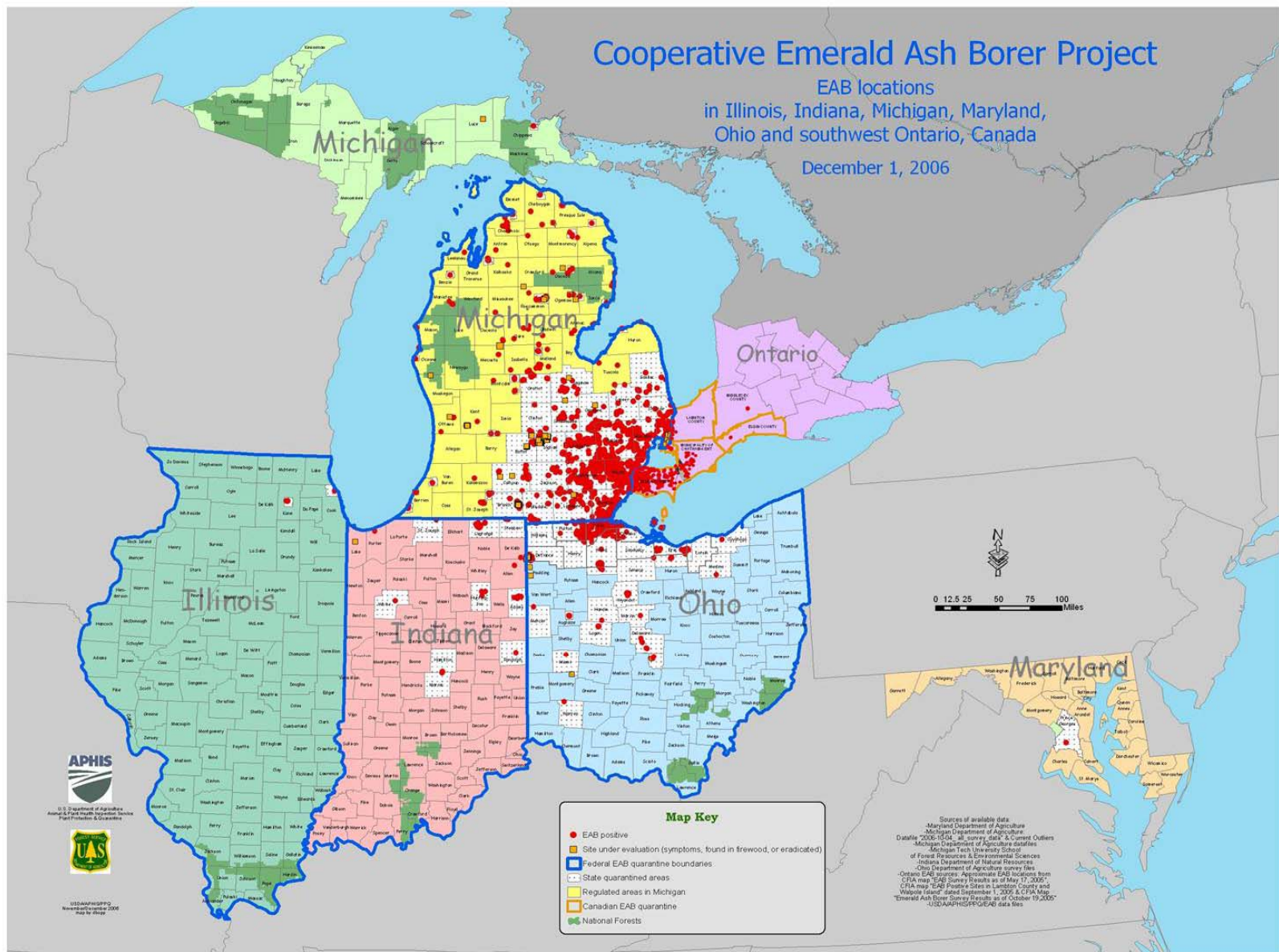


# January 2006





# December 2006

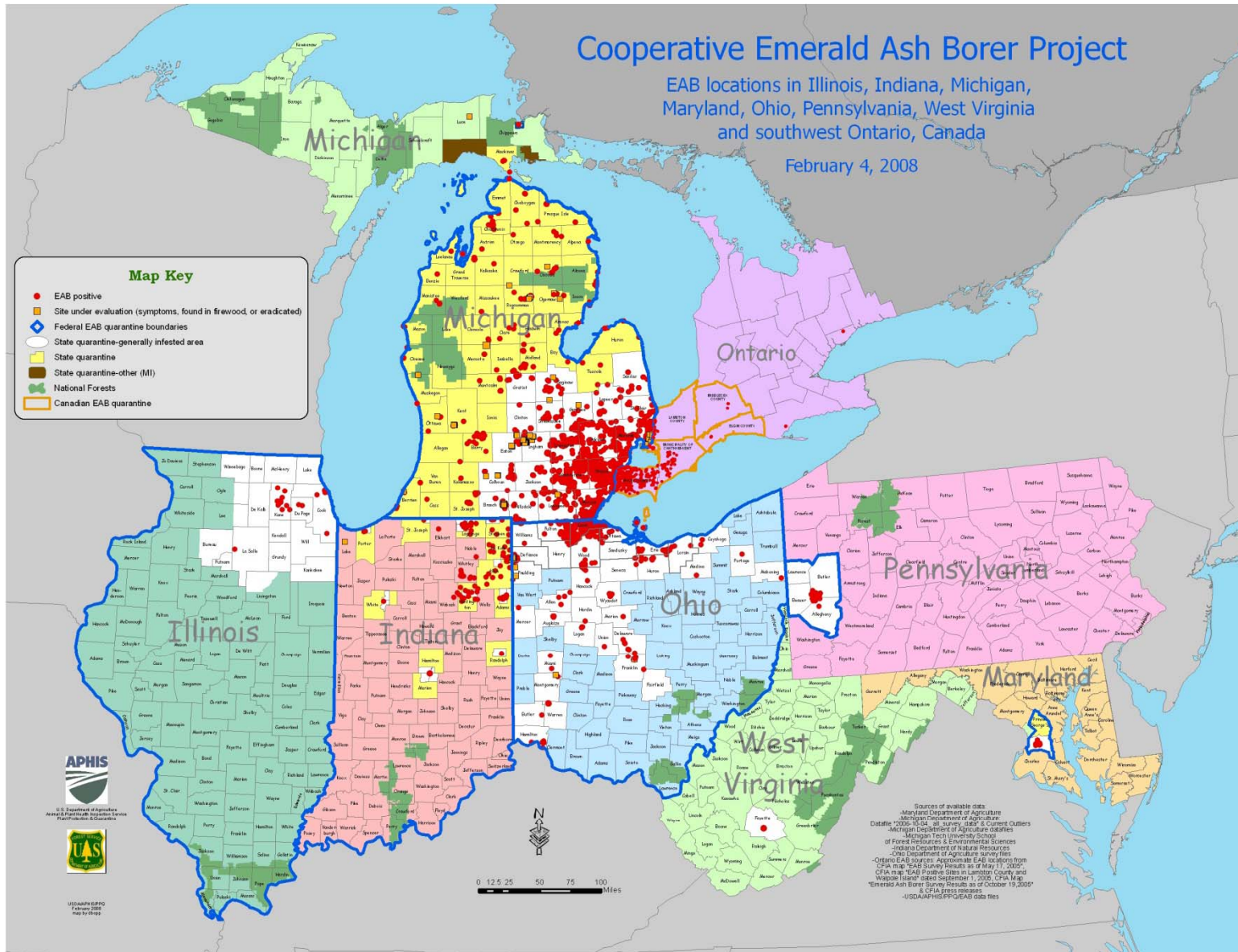


# February 2008

## Cooperative Emerald Ash Borer Project

EAB locations in Illinois, Indiana, Michigan, Maryland, Ohio, Pennsylvania, West Virginia and southwest Ontario, Canada

February 4, 2008



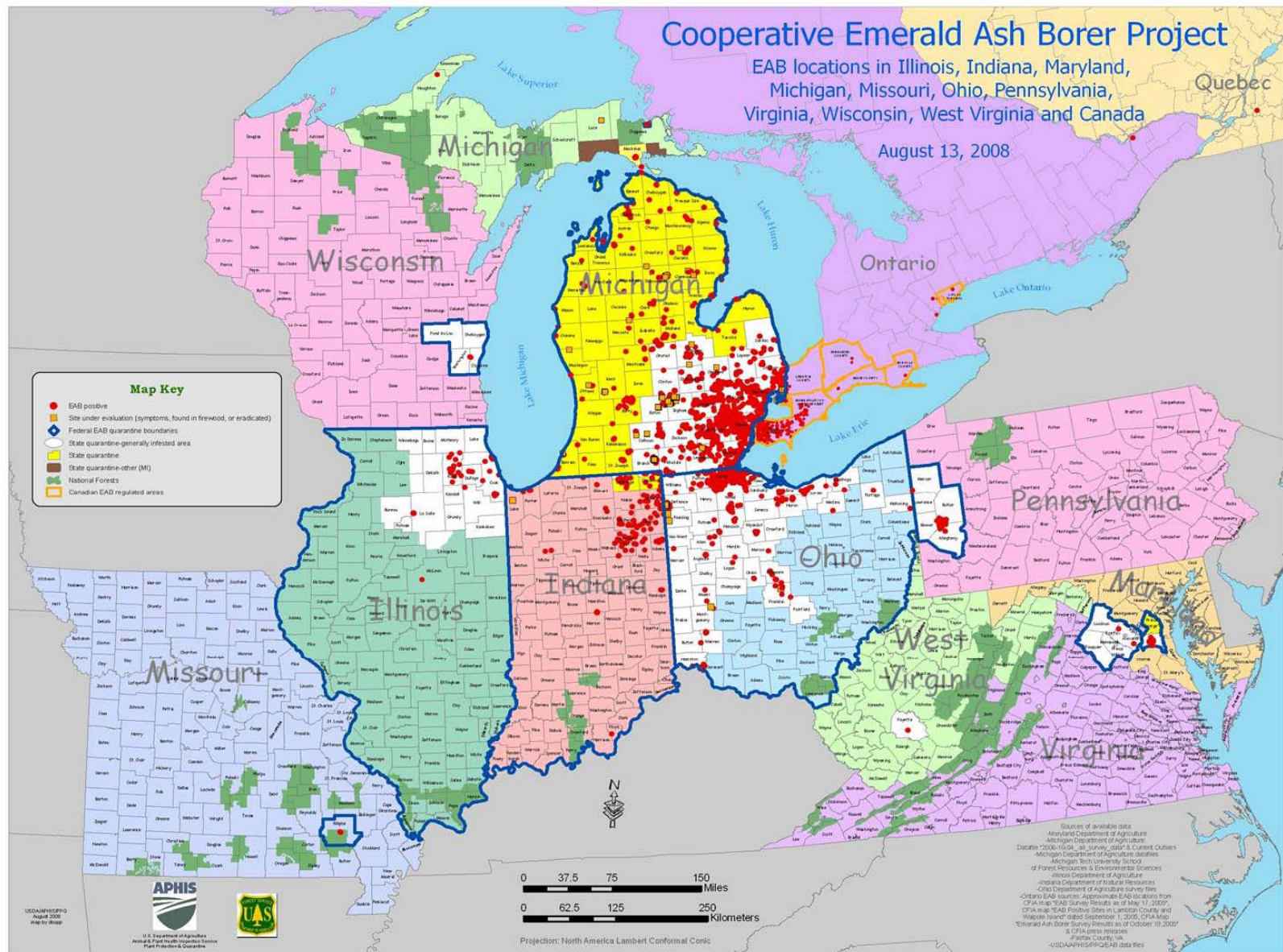


# July 2008





# August 2008



USDA/NHSP/PPG  
August 2008  
map by APHIS

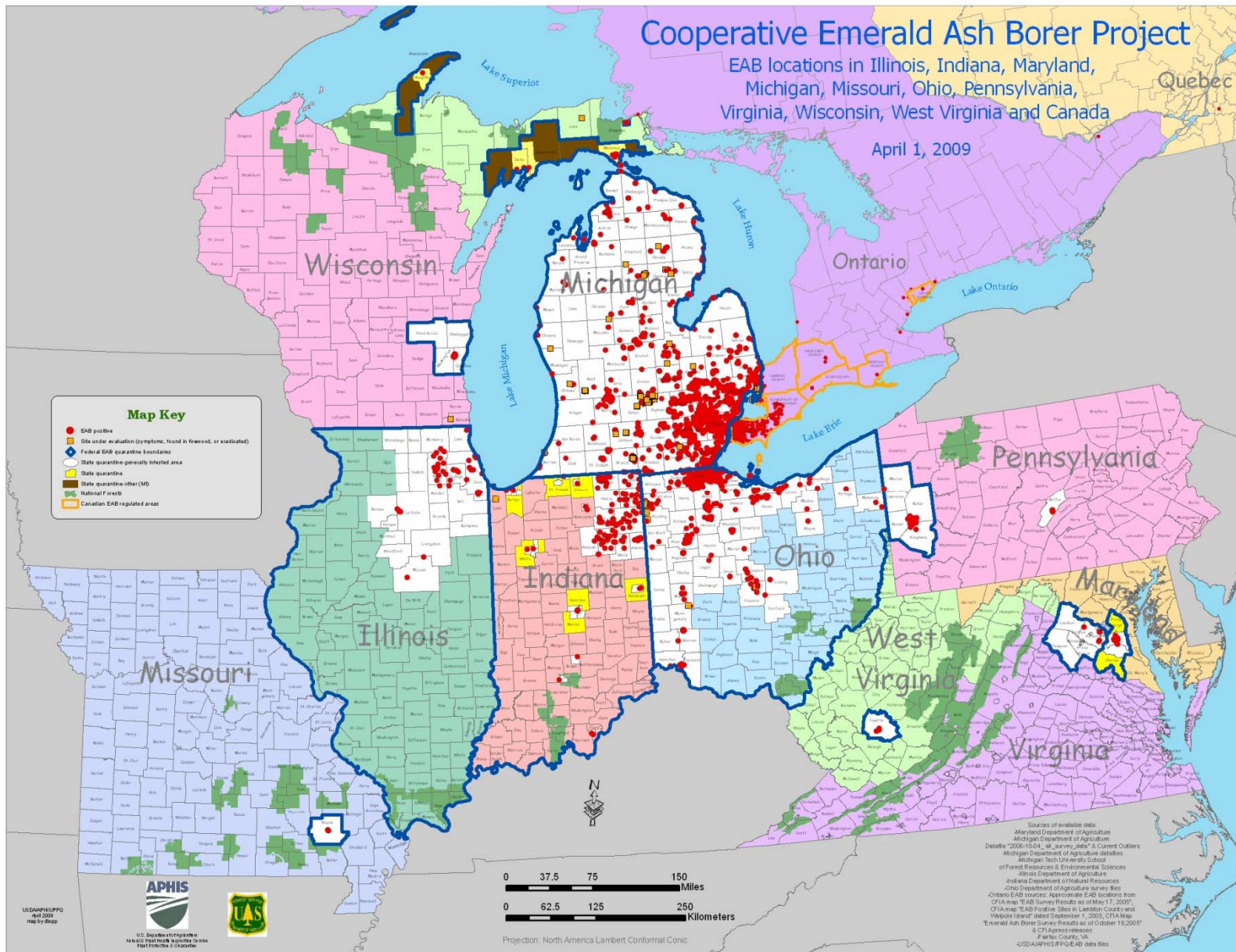


U.S. Department of Agriculture  
Animal & Plant Health Inspection Service  
Forest Protection & Quarantine

Sources of available data:  
 - Maryland Department of Agriculture  
 - Michigan Department of Agriculture  
 - Missouri Department of Agriculture  
 - Ohio Department of Agriculture  
 - Pennsylvania Department of Agriculture  
 - Virginia Department of Agriculture  
 - West Virginia Department of Agriculture  
 - Wisconsin Department of Agriculture  
 - U.S. Department of Agriculture  
 - U.S. Forest Service  
 - U.S. Department of the Interior  
 - U.S. Department of the Environment  
 - U.S. Department of the Navy  
 - U.S. Department of the State  
 - U.S. Department of the Treasury  
 - U.S. Department of the Justice  
 - U.S. Department of the Health and Human Services  
 - U.S. Department of the Education  
 - U.S. Department of the Energy  
 - U.S. Department of the Transportation  
 - U.S. Department of the Veterans Affairs  
 - U.S. Department of the Housing and Urban Development  
 - U.S. Department of the Labor  
 - U.S. Department of the Social Security Administration  
 - U.S. Department of the Postal Service  
 - U.S. Department of the Postal Regulatory Commission  
 - U.S. Department of the Nuclear Regulatory Commission  
 - U.S. Department of the Securities and Exchange Commission  
 - U.S. Department of the Federal Reserve System  
 - U.S. Department of the Federal Reserve Bank  
 - U.S. Department of the Federal Reserve Board  
 - U.S. Department of the Federal Reserve Bank of Atlanta  
 - U.S. Department of the Federal Reserve Bank of Boston  
 - U.S. Department of the Federal Reserve Bank of Chicago  
 - U.S. Department of the Federal Reserve Bank of Cleveland  
 - U.S. Department of the Federal Reserve Bank of Dallas  
 - U.S. Department of the Federal Reserve Bank of Denver  
 - U.S. Department of the Federal Reserve Bank of Kansas City  
 - U.S. Department of the Federal Reserve Bank of Louisville  
 - U.S. Department of the Federal Reserve Bank of Miami  
 - U.S. Department of the Federal Reserve Bank of Minneapolis  
 - U.S. Department of the Federal Reserve Bank of New York  
 - U.S. Department of the Federal Reserve Bank of Philadelphia  
 - U.S. Department of the Federal Reserve Bank of Richmond  
 - U.S. Department of the Federal Reserve Bank of San Francisco  
 - U.S. Department of the Federal Reserve Bank of St. Louis  
 - U.S. Department of the Federal Reserve Bank of St. Paul  
 - U.S. Department of the Federal Reserve Bank of San Antonio  
 - U.S. Department of the Federal Reserve Bank of Seattle  
 - U.S. Department of the Federal Reserve Bank of Tampa  
 - U.S. Department of the Federal Reserve Bank of Washington, DC  
 - U.S. Department of the Federal Reserve Bank of Wichita



# April 2009



USDA/APHIS/PPQ  
 April 2009  
 map to shape



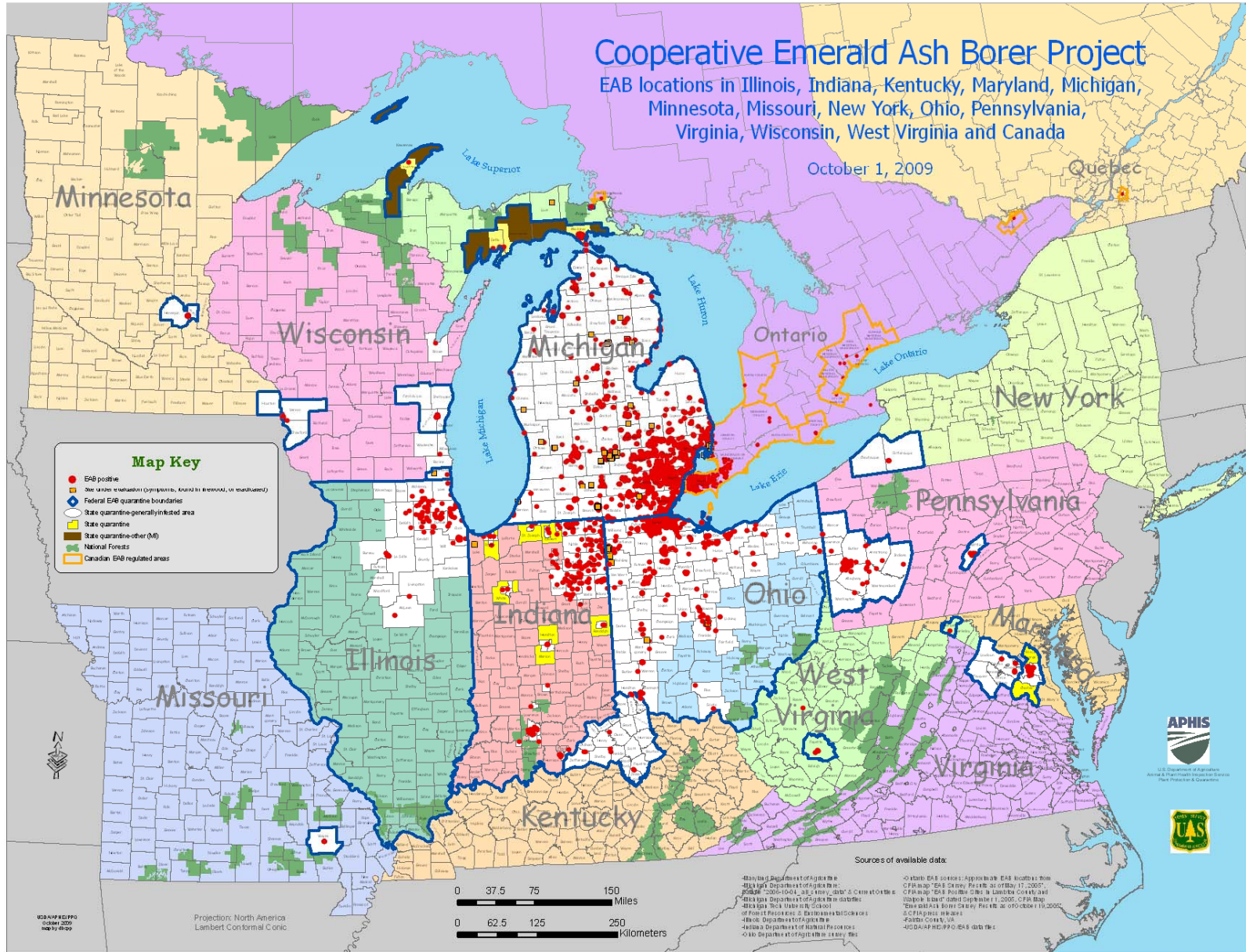
U.S. Department of Agriculture  
 Animal Plant Health Inspection Service  
 Forest Protection & Quarantine Center  
 Forest Protection & Quarantine



# October 2009

## Cooperative Emerald Ash Borer Project EAB locations in Illinois, Indiana, Kentucky, Maryland, Michigan, Minnesota, Missouri, New York, Ohio, Pennsylvania, Virginia, Wisconsin, West Virginia and Canada

October 1, 2009

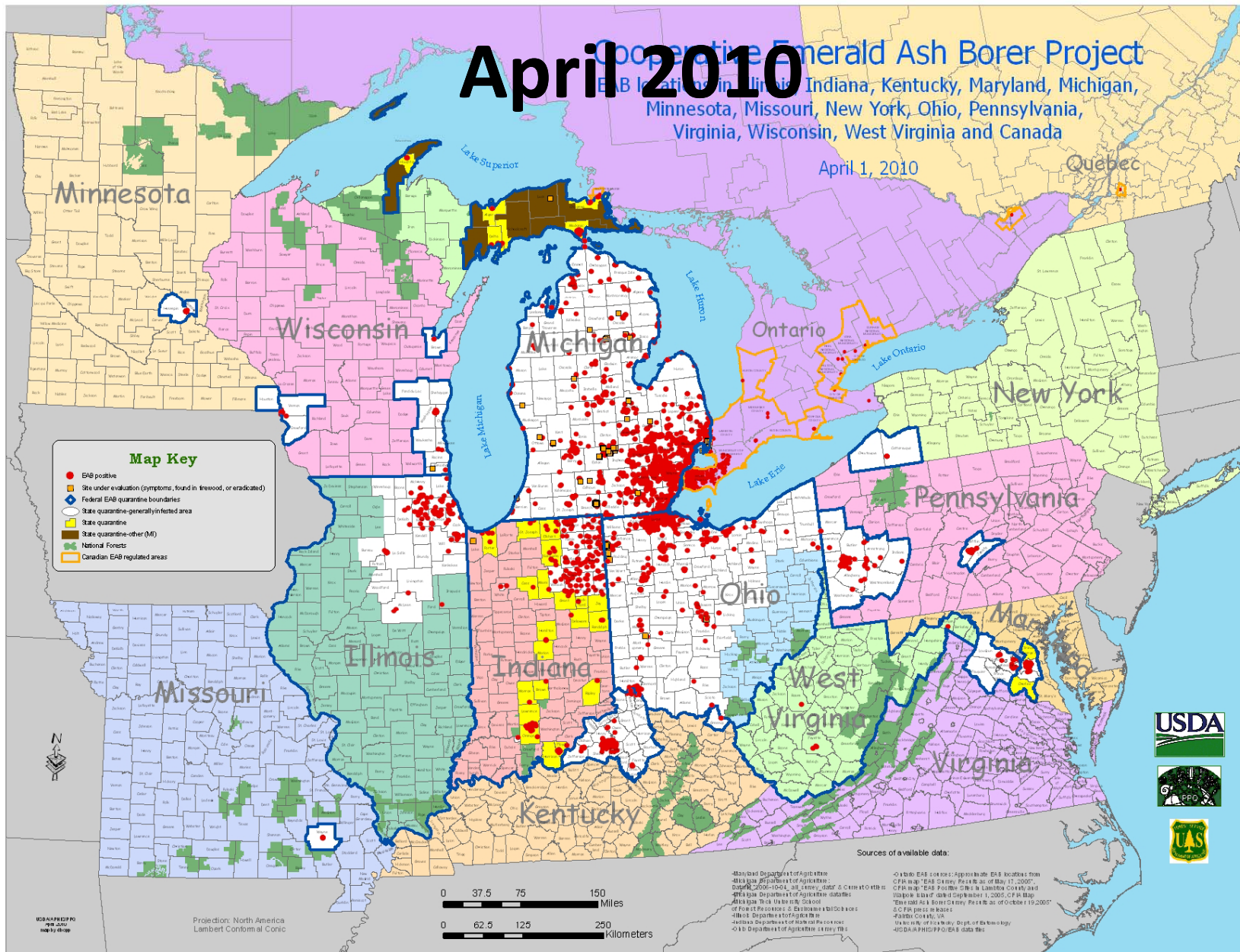




# April 2010

Cooperative Emerald Ash Borer Project  
 EAB Locations in Illinois, Indiana, Kentucky, Maryland, Michigan,  
 Minnesota, Missouri, New York, Ohio, Pennsylvania,  
 Virginia, Wisconsin, West Virginia and Canada

April 1, 2010



Cornell University  
 Cooperative Extension

Preparing for the Emerald Ash Borer  
<http://nyis.info>

# May 2010

## Cooperative Emerald Ash Borer Project

AB Locations in Illinois, Indiana, Kentucky, Maryland, Michigan, Minnesota, Missouri, New York, Ohio, Pennsylvania, Virginia, Wisconsin, West Virginia and Canada

May 10, 2010

Quebec

Minnesota

Wisconsin

Michigan

Ontario

New York

Pennsylvania

Ohio

Maryland

West Virginia

Virginia

Kentucky

Missouri

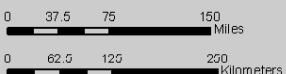
Illinois

Indiana



**Map Key**

- EAB positive
- Site under evaluation (symptoms, found in firewood, or eradicated)
- Federal EAB quarantine boundaries
- ◊ State quarantine - generally infested area
- State quarantine
- ▭ State quarantine - other (MI)
- National Forests
- ▭ Canadian EAB regulated areas



Sources of available data:

- Michigan Department of Agriculture
- Illinois Department of Agriculture
- Indiana Department of Agriculture
- Ohio Department of Agriculture
- West Virginia Department of Agriculture
- Virginia Department of Forestry
- Quebec Department of Agriculture
- USDA APHIS PPQ/EAB data files

USDA APHIS PPQ  
Map 2010  
Map by APHIS

Projection: North America  
Lambert Conformal Conic



Cornell University  
Cooperative Extension

Preparing for the Emerald Ash Borer  
<http://nyis.info>





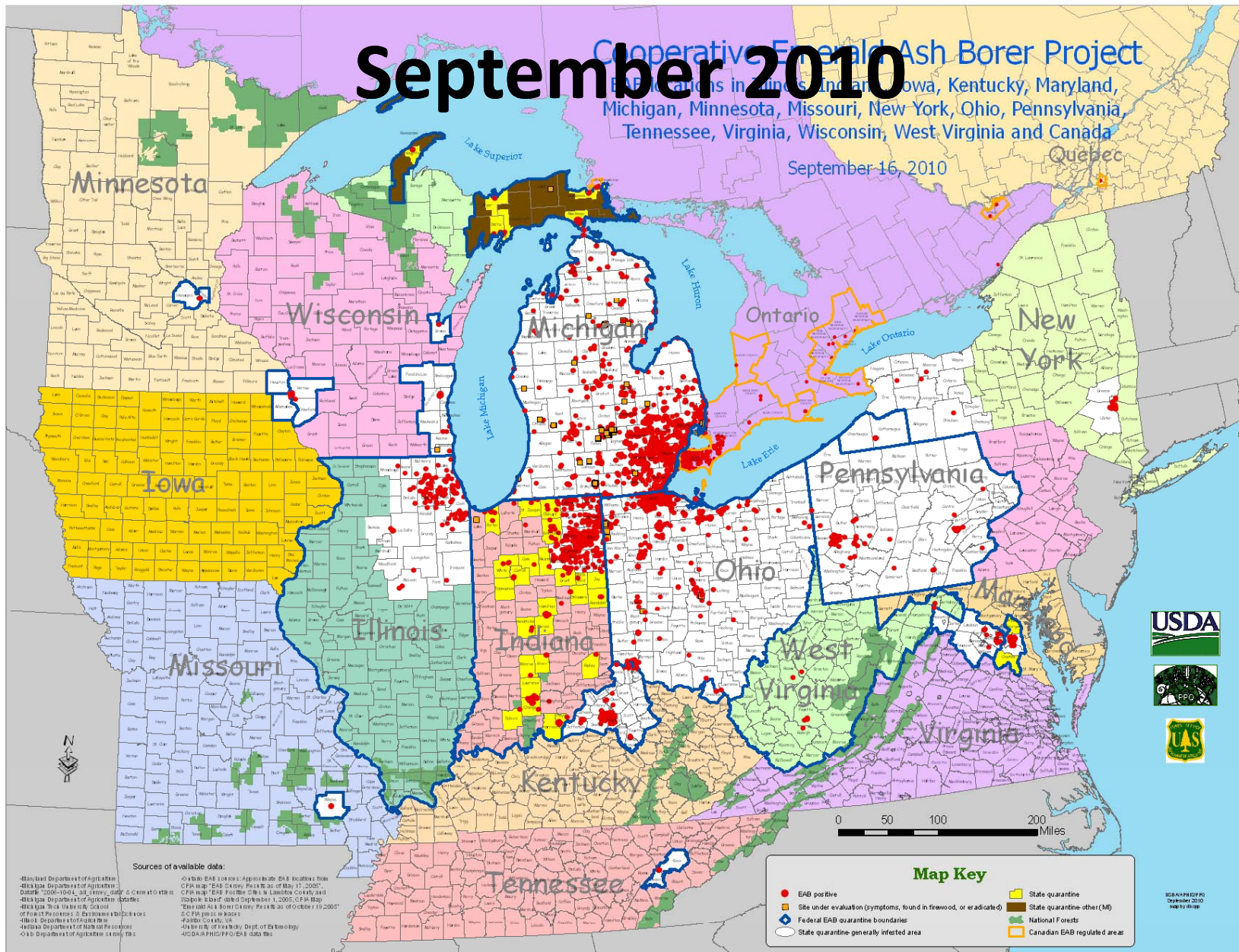


# September 2010

## Cooperative Emerald Ash Borer Project

Emerald Ash Borer in Michigan, Indiana, Iowa, Kentucky, Maryland, Michigan, Minnesota, Missouri, New York, Ohio, Pennsylvania, Tennessee, Virginia, Wisconsin, West Virginia and Canada

September 16, 2010



Cornell University  
Cooperative Extension

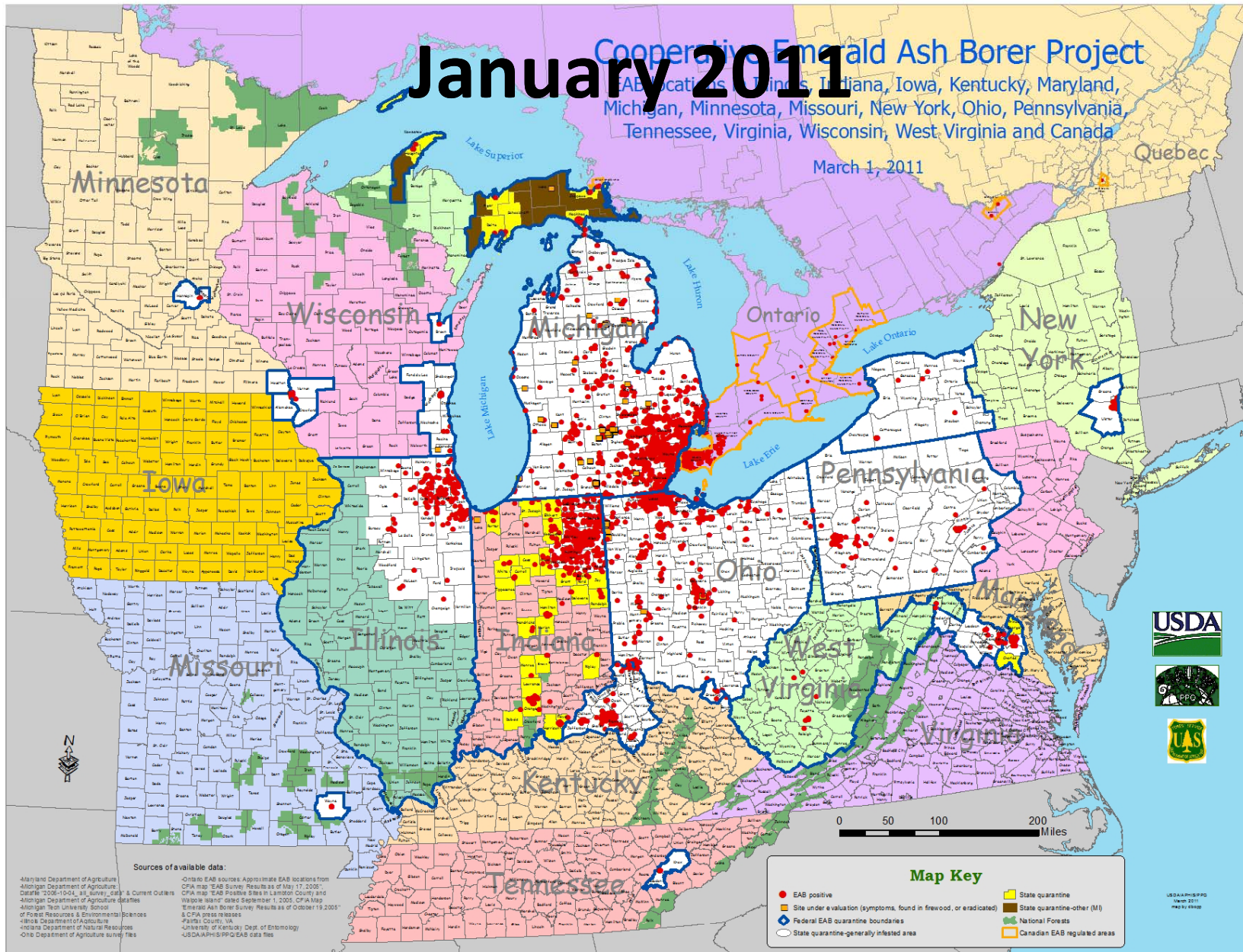
Preparing for the Emerald Ash Borer  
<http://nyis.info>



# January 2011

Cooperative Emerald Ash Borer Project  
 EAB Locations: Indiana, Michigan, Minnesota, Missouri, New York, Ohio, Pennsylvania,  
 Tennessee, Virginia, Wisconsin, West Virginia and Canada

March 1, 2011



Cornell University  
 Cooperative Extension

Preparing for the Emerald Ash Borer  
<http://nyis.info>

# Control Options



- **Resistance**
  - ID and incorporate genetically into native species
- **Biological Control**
  - Three parasitic wasps in culture. Fungi a possibility.
- **Silviculture** – tried but no success
- **Mechanical** – chipping to 1 inch / 2 dimensions
- **Pesticides**
  - Systemics are the only effective pesticides





# Management Options

- **SLow Ash Mortality = SLAM**
  - **Survey**
    - **Early Detection**
      - Visual signs and symptoms
      - Purple traps and girdled trees
  - **Population reduction**
    - **Remove infested trees and destroy EAB**
    - **Attractive clusters of girdled trees**
      - Removed and destroyed after egg laying



# Randolph, NY



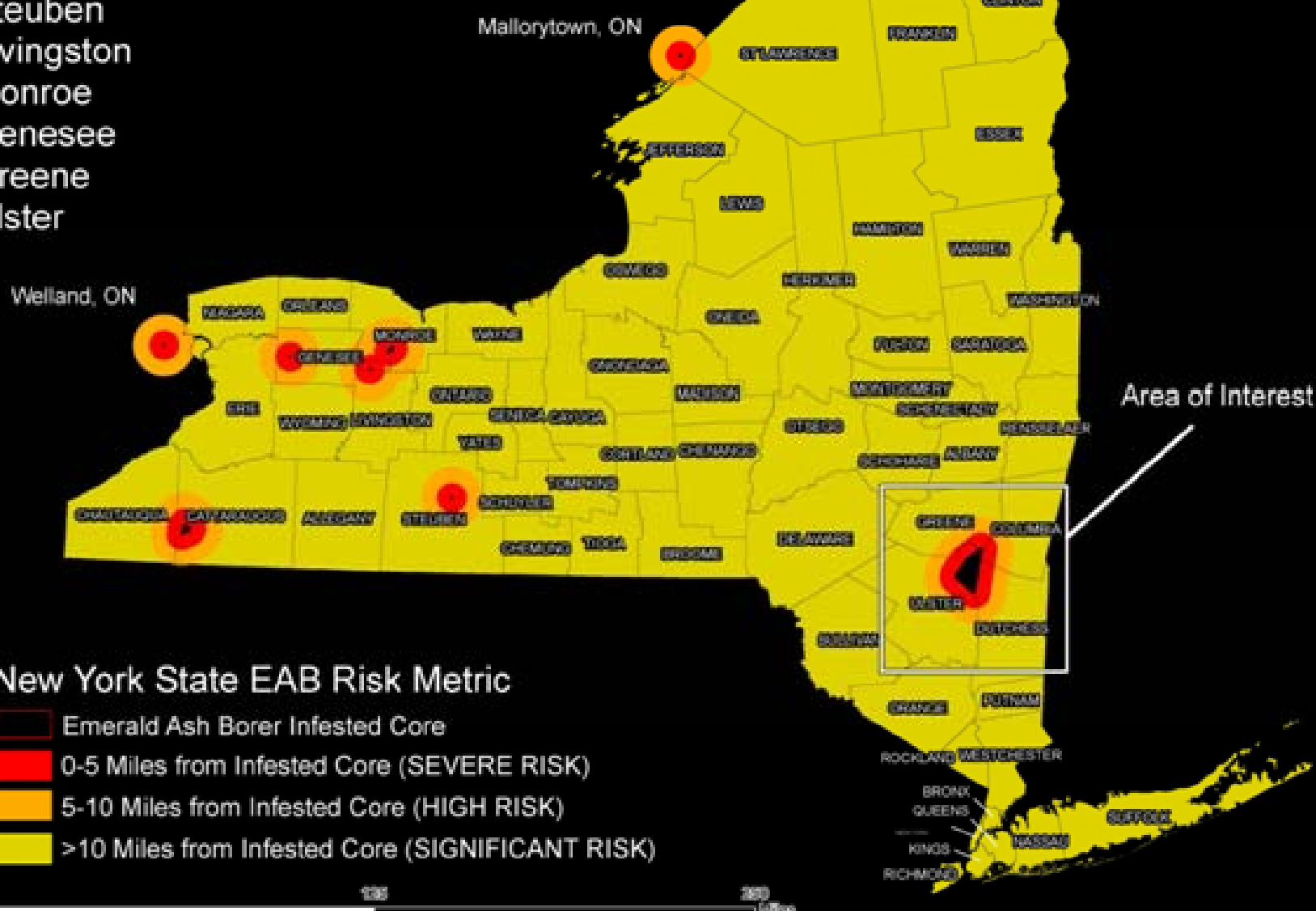
Cornell University  
Cooperative Extension

Preparing for the Emerald Ash Borer  
<http://nyis.info>



# Infested Counties in New York State:

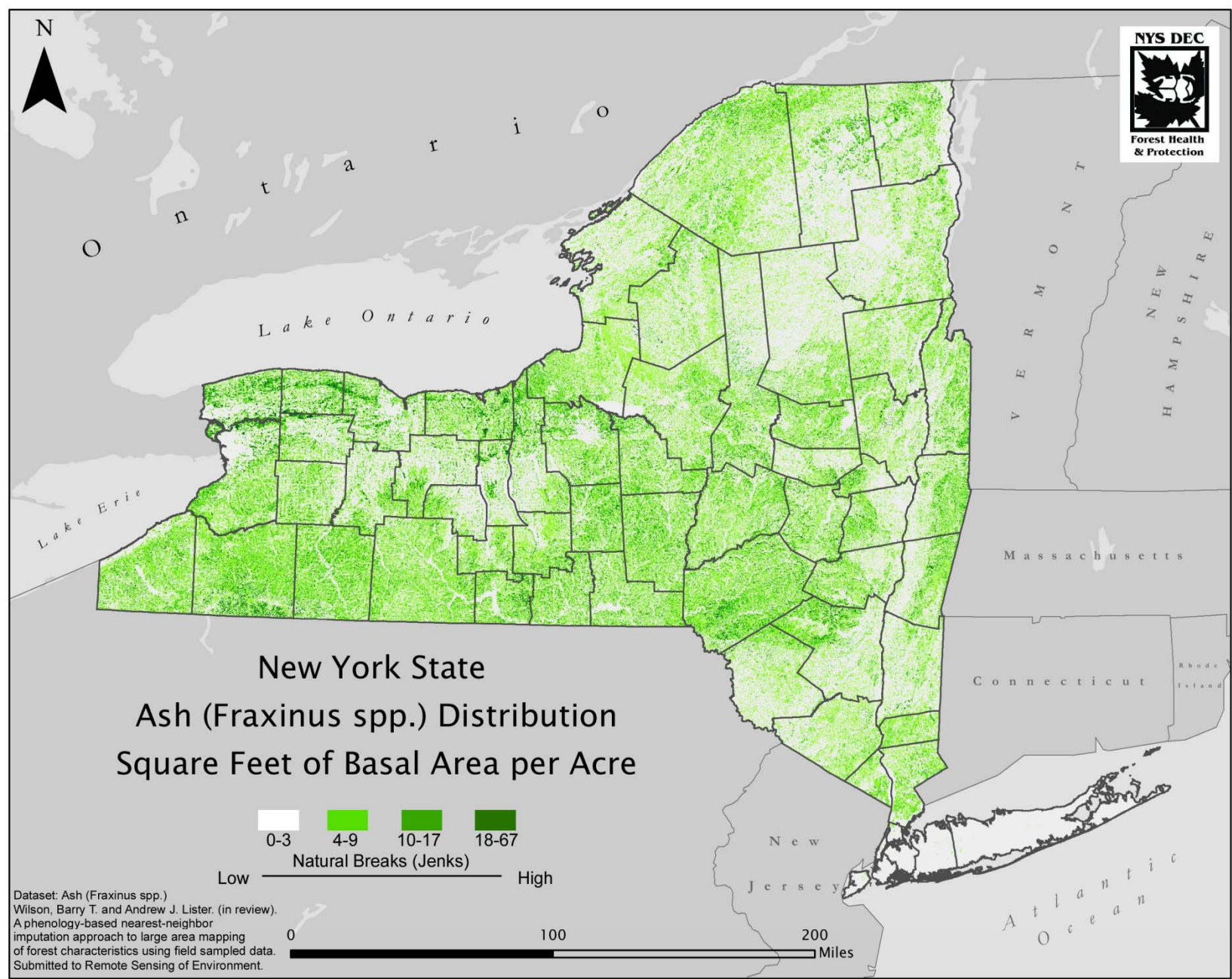
- Cattaraugus
- Steuben
- Livingston
- Monroe
- Genesee
- Greene
- Ulster



## New York State EAB Risk Metric

- Emerald Ash Borer Infested Core
- 0-5 Miles from Infested Core (SEVERE RISK)
- 5-10 Miles from Infested Core (HIGH RISK)
- >10 Miles from Infested Core (SIGNIFICANT RISK)









# What's at stake?





# What's at stake in our communities?

## Street trees



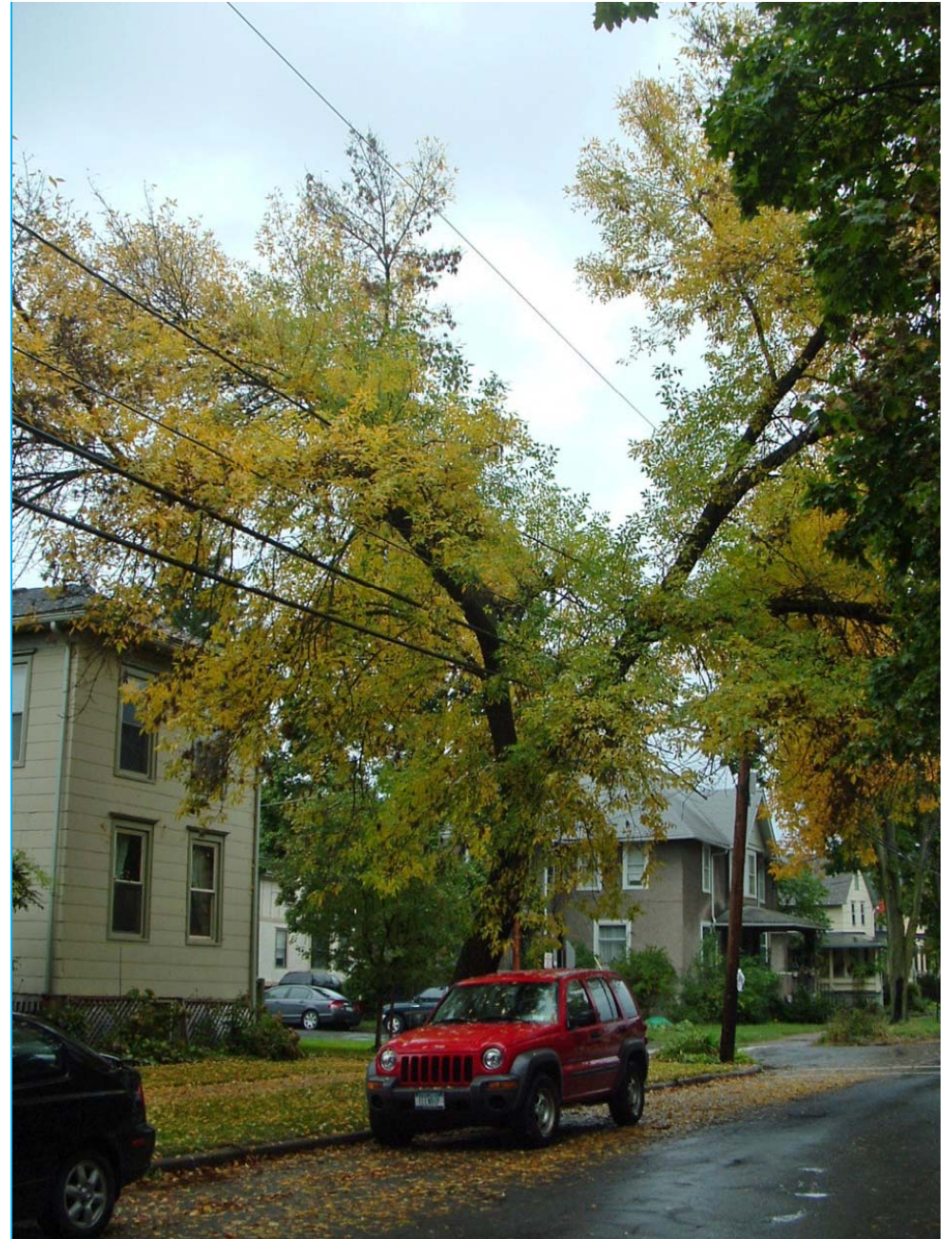
Cornell University  
Cooperative Extension

Preparing for the Emerald Ash Borer  
<http://nyis.info>



# What's at stake in our communities?

## Power Line ROW's



Cornell University  
Cooperative Extension

Preparing for the Emerald Ash Borer  
<http://nyis.info>



# What's at stake in our communities?

## Residences



Cornell University  
Cooperative Extension

Preparing for the Emerald Ash Borer  
<http://nyis.info>



# What's at stake in our communities?

## Residences



Cornell University  
Cooperative Extension

Preparing for the Emerald Ash Borer  
<http://nyis.info>



# What's at stake in our communities?

## Residences





# What's at Stake?



Cornell University  
Cooperative Extension

Preparing for the Emerald Ash Borer  
<http://nyis.info>



# What's at Stake



Cornell University  
Cooperative Extension

Preparing for the Emerald Ash Borer  
<http://nyis.info>



# Urban Forest Issues

- **Liability and Public Health Hazard**
  - **Street tree inventory.**
  - **Dead trees fall down, must act fast.**
  - **Whose tree is that anyway?**
  - **Pesticide use.**



# Urban Forest Issues

- **Political**
  - **It's not here, why bother?**
  - **It doesn't look dead!**
  - **Proactive vs. reactive decision making and resource allocation**





# Urban Forest Issues

- **Human and Economic Resources**
  - Ash die quickly, not prepared.
  - Time needed to train personnel.
  - Equipment needs.
  - Search for funding sources.



# Community Preparedness

- **Time - Slow the Spread with SLAM**
  - **Planning essential to minimize impact**
  - **Develop Community Action Plans**
  - **Inter-municipal cooperation**
  - **Develop wood utilization options**





# Community Preparedness

- **Develop Community Action Plans**
  - Tree inventory
  - Legal issues
  - Personnel training
  - Treatment decisions
  - Contractual arrangements
  - Education
- **New York State Emerald Ash Borer Community Preparedness Plan Development Workbook**
  - [nyis.info](http://nyis.info)







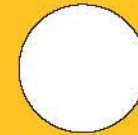
# Community Preparedness

This **ASH TREE** is at risk of being killed by the **EMERALD ASH BORER BEETLE**.

For information on how you can best manage your ash trees:

visit the Cornell Cooperative Extension website: [www.nyis.info](http://www.nyis.info) or contact your local

- Cornell Cooperative Extension
- NYS Dept. of Environmental Conservation
- Emerald Ash Borer Task Force at:



Cornell University  
Cooperative Extension



NYS Department  
of Environmental  
Conservation



Cornell University  
Cooperative Extension

Preparing for the Emerald Ash Borer  
<http://nyis.info>

# Inter-municipal Cooperation

- Share machinery & expertise
- Wood management infrastructure
  - Marshalling Yards for Arborists and Homeowners
- Leverage funding





# Wood Utilization

## Develop wood utilization options

- Specialized tools for processing
- Chip utilization – mulch, power
- Develop markets for products



# The EAB Message

- **Our community CAN take actions NOW to prepare for EAB & minimize impact.**
  - **Slow the Spread – Don't move firewood!**
  - **It is time to take stock of our ash resources, make plans now.**
  - **Early detection is key. Know the signs & symptoms of EAB infestation. Report it!**
  - **EAB resources are readily available**
    - **CCE and DEC**





Joe Heller ©2001  
GREEN BAY PRESS-GAZ.

nyis.info



Cornell University  
Cooperative Extension

Preparing for the Emerald Ash Borer  
<http://nyis.info>