



Election Day Flow Chart - for Poll Site Managers and Inspectors

Greet the Voter

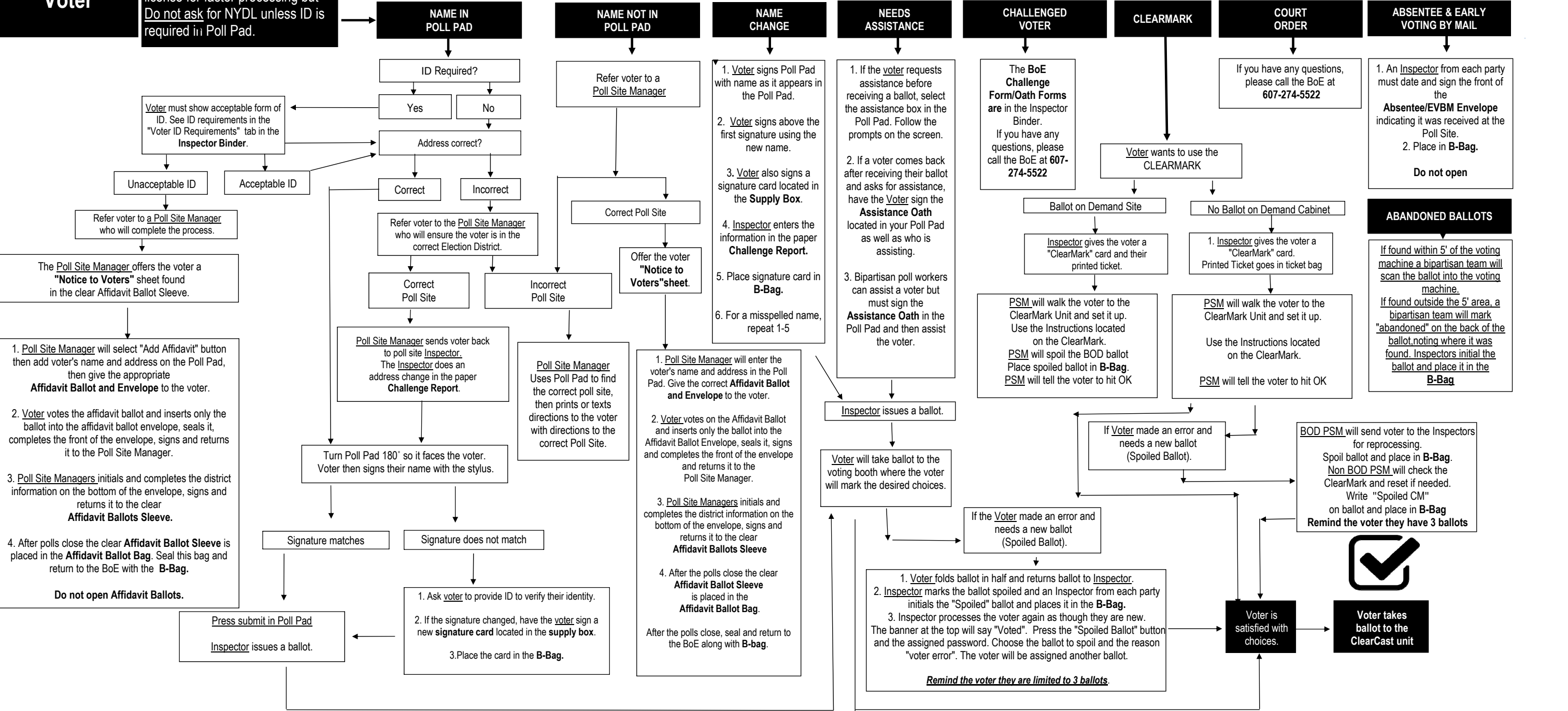
Request first three letters of voter's last and first name OR their birth date. Voters can also provide their NYS Driver's license for faster processing but **Do not ask** for NYDL unless ID is required in Poll Pad.

Poll Watchers

1. For each Election District a Poll Watcher must give the Poll Site Manager a Poll Watchers Certificate signed by the Party Chairperson or a Candidate. Place the certificate in the B-Bag
2. Watcher may watch the election process.
3. Watcher **may not** interfere with Poll Worker duties or the voting process.

Voting Machine Problems?
Call the Board of Elections
(607) 274-5522

1. Continue to give ballots.
2. Voter will insert the ballot in the red Emergency Ballot bag prepared by the Poll Site Manager.
3. These ballots will be scanned by the Poll Site Managers after the polls close.



AFFIDAVIT PROCEDURES FOR POLL SITE MANAGERS

Tip: LOOK UP VOTER'S ADDRESS USING THE ELECTION DISTRICT FINDER (MENU/ELECTION DISTRICT FINDER)

